

## Allgemeine Informationen

Katalog-Nr.:  
21506-1-AP

Größe:

150ul, Konzentration: 150 µg/ml von  
Nanodrop und 133 µg/ml durch die  
Bradford-Methode mit BSA als  
Standard;

Wirt:

Kaninchen

Isotyp:

IgG

Immunogen Katalognummer:  
AG15987

GenBank-Zugangsnummer:

BC106877

GeneID (NCBI):

55765

Vollständiger Name:

chromosome 1 open reading frame  
106

Berechnete Masse:

663 aa, 73 kDa

Beobachtete Masse:

70-73 kDa

Reinigungsmethode:

Antigen-Affinitätsreinigung

Empfohlene Verdünnungen:

WB 1:500-1:2000  
IP 0.5-4.0 µg für IP und 1:500-1:1000  
für WB  
IHC 1:50-1:500  
IF 1:10-1:100

## Anwendungen

Geprüfte Anwendungen:

IF, IHC, IP, WB, ELISA

Getestete Reaktivität:

Human, Maus, Ratte

**Hinweis-IHC: Antigendemaskierung mit TE-  
Puffer pH 9,0 empfohlen. (\*) Wahlweise  
kann die Antigendemaskierung auch mit  
Citratpuffer pH 6,0 erfolgen.**

Positivkontrollen:

WB: Mausnierengewebe, HEK-293-Zellen,  
Rattennierengewebe

IP: Mausnierengewebe,

IHC: Mausnierengewebe,

IF: HEK-293-Zellen, HeLa-Zellen

## Hintergrundinformationen

C1orf106 (also known as innate immunity activator, INAVA) has thus far been considered to play a significant role in intestinal inflammatory diseases. C1orf106 is highly expressed in the human intestine and intestinal epithelial cell lines but expressed at low levels in myeloid cells and mouse bone marrow-derived macrophages (PMID: 29420262). Recent studies have also shown that C1orf106 protects against colitis by stabilizing E-cadherin and bridges mucosal barrier function with inflammatory signaling (PMID: 31376015).

## Lagerung

Lagerungsbedingungen:

Bei -20°C lagern. Nach dem Versand ein Jahr lang stabil

Lagerungspuffer:

PBS mit 0.02% Natriumazid und 50% Glycerin pH 7.3.

Aliquotieren ist nicht notwendig bei -20°C Lagerung

\*\*\* 20ul-Größen enthalten 0.1% BSA

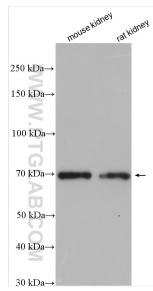
For technical support and original validation data for this product please contact:

T: 1 (888) 4PTGLAB (1-888-478-4522) (toll free  
in USA), or 1(312) 455-8498 (outside USA)

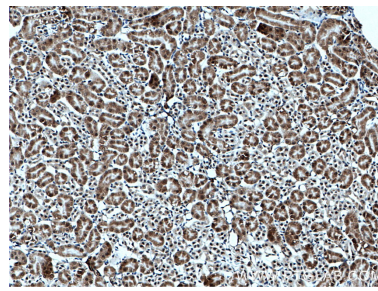
E: proteintech@ptglab.com  
W: ptglab.com

This product is exclusively available under Proteintech  
Group brand and is not available to purchase from any  
other manufacturer.

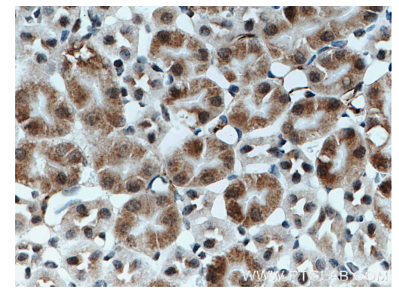
## Ausgewählte Validierungsdaten



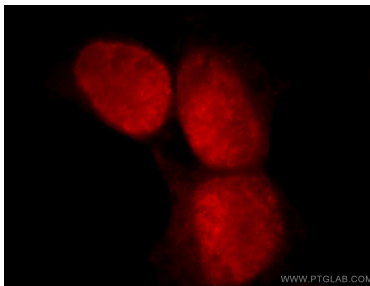
Various lysates were subjected to SDS PAGE followed by western blot with 21506-1-AP (C1orf106 antibody) at dilution of 1:1000 incubated at room temperature for 1.5 hours.



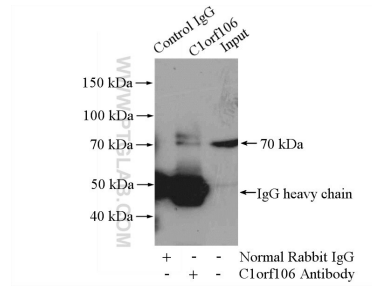
Immunohistochemical analysis of paraffin-embedded mouse kidney tissue slide using 21506-1-AP (C1orf106 antibody) at dilution of 1:200 (under 10x lens. Heat mediated antigen retrieval with Tris-EDTA buffer (pH 9.0).



Immunohistochemical analysis of paraffin-embedded mouse kidney tissue slide using 21506-1-AP (C1orf106 antibody) at dilution of 1:200 (under 40x lens. Heat mediated antigen retrieval with Tris-EDTA buffer (pH 9.0).



Immunofluorescent analysis of HEK-293 cells, using C1orf106 antibody 21506-1-AP at 1:25 dilution and Rhodamine-labeled goat anti-rabbit IgG (red).



IP Result of anti-C1orf106 (IP:21506-1-AP, 4ug; Detection:21506-1-AP 1:500) with mouse kidney tissue lysate 4800ug.