

Nur für Forschungszwecke

GPR50 Polyklonaler Antikörper

Katalog-Nr.: 21514-1-AP



Allgemeine Informationen

Katalog-Nr.:
21514-1-AP

Größe:
150ul, Konzentration: 400 µg/ml von
Nanodrop und 327 µg/ml durch die
Bradford-Methode mit BSA als
Standard;

Wirt:
Kaninchen

Isotyp:
IgG

Immunogen Katalognummer:
AG16040

GenBank-Zugangsnummer:
BC103696

GeneID (NCBI):
9248

Vollständiger Name:
G protein-coupled receptor 50

Berechnete Masse:
617 aa, 67 kDa

Beobachtete Masse:
67 kDa

Reinigungsmethode:

Antigen-Affinitätsreinigung

Empfohlene Verdünnungen:

WB 1:1000-1:8000

IP 0.5-4.0 µg für IP und 1:500-1:1000
für WB

IF 1:20-1:200

Anwendungen

Geprüfte Anwendungen:

FC, IF, IP, WB, ELISA

Getestete Reaktivität:

Human, Maus

Positivkontrollen:

WB : HEK-293-Zellen, HeLa-Zellen

IP : HeLa-Zellen,

IF : SH-SY5Y-Zellen, mouse Hippocampus tissue

Hintergrundinformationen

Lagerung

Lagerungsbedingungen:

Bei -20°C lagern. Nach dem Versand ein Jahr lang stabil

Lagerungspuffer:

PBS mit 0.02% Natriumazid und 50% Glycerin pH 7.3.

Aliquotieren ist nicht notwendig bei -20°C Lagerung

***** 20ul-Größen enthalten 0.1% BSA**

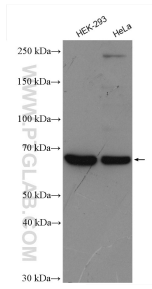
For technical support and original validation data for this product please contact:

T: 1 (888) 4PTGLAB (1-888-478-4522) (toll free
in USA), or 1(312) 455-8498 (outside USA)

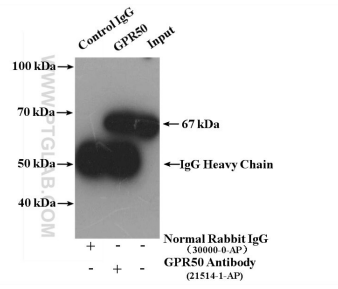
E: proteintech@ptglab.com
W: ptglab.com

This product is exclusively available under Proteintech Group brand and is not available to purchase from any other manufacturer.

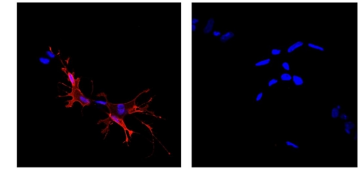
Ausgewählte Validierungsdaten



Various lysates were subjected to SDS PAGE followed by western blot with 21514-1-AP (GPR50 antibody) at dilution of 1:4000 incubated at room temperature for 1.5 hours.

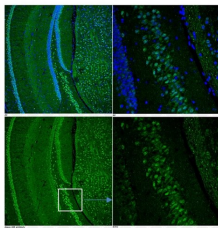


HeLa cells were subjected to SDS PAGE followed by western blot with 21514-1-AP (GPR50 antibody) at dilution of 1:500.



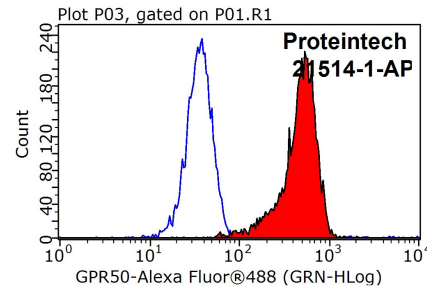
1:1000
No primary antibody control
Sample: SH-SY5Y cells, GPR50 transfected
optimal dilution: 1 in 1000

IF result of GPR50 antibody (21514-1-AP, 1:1,000) with SH-SY5Y cells transfected with GPR50 by Dr. Qian Li, University of Edinburgh.



Hippocampus, CS7 BL/6 mouse, adult
Optimal dilution: 1 in 50

IF result of GPR50 antibody (21514-1-AP, 1:50) with mouse hippocampus by Dr. Qian Li, University of Edinburgh.



1X10⁶ K-562 cells were stained with 0.2ug GPR50 antibody (21514-1-AP, red) and control antibody (blue). Fixed with 90% MeOH blocked with 3% BSA (30 min). Alexa Fluor 488-conjugated AffiniPure Goat Anti-Rabbit IgG(H+L) with dilution 1:1000.