

Nur für Forschungszwecke

RHOG Polyklonaler Antikörper

Katalog-Nr.: 21576-1-AP



Allgemeine Informationen

Katalog-Nr.: 21576-1-AP	GenBank-Zugangsnummer: BC104178	Reinigungsmethode: Antigen-Affinitätsreinigung
Größe: 150ul, Konzentration: 260 µg/ml von Nanodrop;	GeneID (NCBI): 391	Empfohlene Verdünnungen: WB 1:500-1:1000
Wirt: Kaninchen	Vollständiger Name: ras homolog gene family, member G (rho G)	
Isotyp: IgG	Berechnete Masse: 191 aa, 21 kDa	
Immunogen Katalognummer: AG16118	Beobachtete Masse: 21 kDa	

Anwendungen

Geprüfte Anwendungen: WB, ELISA	Positivkontrollen: WB : Jurkat-Zellen, HeLa-Zellen, K-562-Zellen, MCF-7-Zellen
Getestete Reaktivität: Human	

Hintergrundinformationen

RHOG, also named as ARHG, belongs to the small GTPase superfamily and Rho family. It is required for the formation of membrane ruffles during macropinocytosis. And it is required for the formation of cup-like structures during trans-endothelial migration of leukocytes. In case of Salmonella enterica infection, it is activated by SopB and SGEF, which induces cytoskeleton rearrangements and promotes bacterial entry. This antibody is specific to RHOG.

Lagerung

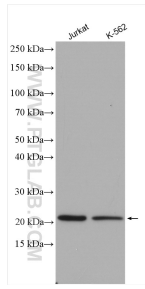
Lagerungsbedingungen:
Bei -20°C lagern. Nach dem Versand ein Jahr lang stabil
Lagerungspuffer:
PBS mit 0.02% Natriumazid und 50% Glycerin pH 7.3.
Aliquotieren ist nicht notwendig bei -20°C Lagerung

***** 20ul-Größen enthalten 0.1% BSA**

For technical support and original validation data for this product please contact:
T: 1 (888) 4PTGLAB (1-888-478-4522) (toll free in USA), or 1(312) 455-8498 (outside USA) E: proteintech@ptglab.com
W: ptglab.com

This product is exclusively available under Proteintech Group brand and is not available to purchase from any other manufacturer.

Ausgewählte Validierungsdaten



Various lysates were subjected to SDS PAGE followed by western blot with 21576-1-AP (RHOG antibody) at dilution of 1:600 incubated at room temperature for 1.5 hours.