

## Allgemeine Informationen

<b>Katalog-Nr.:</b> 21698-1-AP	<b>GenBank-Zugangsnummer:</b> BC152452	<b>Reinigungsmethode:</b> Antigen-Affinitätsreinigung
<b>Größe:</b> 150ul, Konzentration: 350 µg/ml von Nanodrop;	<b>GeneID (NCBI):</b> 4734	<b>Empfohlene Verdünnungen:</b> WB 1:1000-1:8000 IP 0.5-4.0 ug für IP und 1:500-1:1000 für WB
<b>Wirt:</b> Kaninchen	<b>Vollständiger Name:</b> neural precursor cell expressed, developmentally down-regulated 4	<b>IHC 1:50-1:500</b>
<b>Isotyp:</b> IgG	<b>Berechnete Masse:</b> 1319 aa, 149 kDa	
<b>Immunogen Katalognummer:</b> AG16291	<b>Beobachtete Masse:</b> 115 kDa	

## Anwendungen

## Geprüfte Anwendungen:

IHC, IP, WB, ELISA

## In Publikationen genannte Anwendungen:

CoIP, IF, IHC, IP, WB

## Getestete Reaktivität:

Affe, Human, Maus, Ratte

## Zitierte Arten:

Huhn, Human, Maus, Ratte

**Hinweis-IHC: Antigenemaskierung mit TE-Puffer pH 9,0 empfohlen. (\*) Wahlweise kann die Antigenemaskierung auch mit Citratpuffer pH 6,0 erfolgen.**

## Positivkontrollen:

WB: A549-Zellen, C6-Zellen, COS-7-Zellen, HEK-293-Zellen, HT-1080-Zellen, Jurkat-Zellen, NIH/3T3-Zellen

IP: C6-Zellen,

IHC: humanes Mammakarzinomgewebe, humanes Lebergewebe, humanes Lungenkarzinomgewebe

## Hintergrundinformationen

NEDD4 and similar proteins discovered subsequently became a family of HECT ligases, comprising 9 human proteins including NEDD4, NEDD4-2 (NEDD4L), ITCH, SMURF1, SMURF2, WWP1, WWP2, NEDL1 AND NEDL2. NEDD4 is a highly evolutionarily conserved protein from yeast to man, and was initially cloned as a highly expressed gene in the early embryonic brain. NEDD4 is frequently overexpressed in many different types of cancer, and decreased levels of NEDD4 can also be associated with cancer. It can be a potential therapeutic target for the treatment of human cancer. (PMID: 25527121). The human NEDD4 gene is located on chromosome 15q21.3 and comprises 30 exons (HGNC:7727) shown to encode a ~120 kDa protein. Otherwise there is a 75 kDa isoform in addition to full length NEDD4 (PMID: 24907641).

## Bemerkenswerte Veröffentlichungen

Verfasser	Pubmed ID	Journal	Anwendung
Haichuan Wang	33232824	Cell Mol Gastroenterol Hepatol	IHC
Yiru Shao	35355403	J Cell Mol Med	WB, IHC
Jincheng Zhang	35271885	Virus Res	WB

## Lagerung

## Lagerungsbedingungen:

Bei -20°C lagern. Nach dem Versand ein Jahr lang stabil

## Lagerungspuffer:

PBS mit 0.02% Natriumazid und 50% Glycerin pH 7.3.

Aliquotieren ist nicht notwendig bei -20°C Lagerung

\*\*\* 20ul-Größen enthalten 0.1% BSA

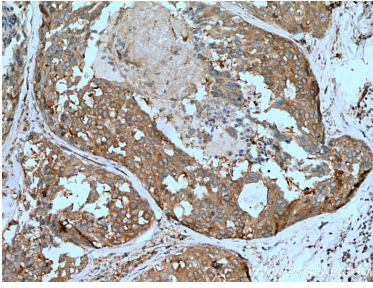
For technical support and original validation data for this product please contact:

T: 1 (888) 4PTGLAB (1-888-478-4522) (toll free in USA), or 1(312) 455-8498 (outside USA)

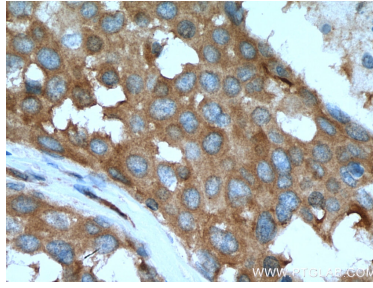
E: [proteintech@ptglab.com](mailto:proteintech@ptglab.com)  
W: [ptglab.com](http://ptglab.com)

**This product is exclusively available under Proteintech Group brand and is not available to purchase from any other manufacturer.**

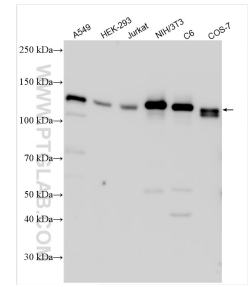
## Ausgewählte Validierungsdaten



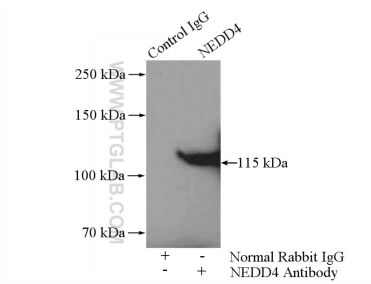
Immunohistochemical analysis of paraffin-embedded human breast cancer tissue slide using 21698-1-AP (NEDD4 antibody) at dilution of 1:200 (under 10x lens). Heat mediated antigen retrieval with Tris-EDTA buffer (pH 9.0).



Immunohistochemical analysis of paraffin-embedded human breast cancer tissue slide using 21698-1-AP (NEDD4 antibody) at dilution of 1:200 (under 40x lens). Heat mediated antigen retrieval with Tris-EDTA buffer (pH 9.0).



Various lysates were subjected to SDS PAGE followed by western blot with 21698-1-AP (NEDD4 antibody) at dilution of 1:4000 incubated at room temperature for 1.5 hours.



IP Result of anti-NEDD4 (IP:21698-1-AP, 4ug; Detection:21698-1-AP 1:500) with C6 cells lysate 1600ug.