

Nur für Forschungszwecke

# Integrin Beta 4 Polyklonaler Antikörper



Katalog-Nr.: 21738-1-AP

Vorgestelltes Produkt

14 Publikationen

## Allgemeine Informationen

Katalog-Nr.:  
21738-1-AP

Größe:  
150ul, Konzentration: 400 µg/ml von  
Nanodrop und 260 µg/ml durch die  
Bradford-Methode mit BSA als  
Standard;

Wirt:  
Kaninchen

Isotyp:  
IgG

Immunogen Katalognummer:  
AG16450

GenBank-Zugangsnummer:  
BC126411

GeneID (NCBI):  
3691

Vollständiger Name:  
integrin, beta 4

Berechnete Masse:  
1752 aa, 195 kDa

Beobachtete Masse:  
200-240 kDa

Reinigungsmethode:

Antigen-Affinitätsreinigung

Empfohlene Verdünnungen:

WB 1:500-1:1000  
IP 0.5-4.0 µg für IP und 1:500-1:1000  
für WB  
IHC 1:300-1:1200

## Anwendungen

Geprüfte Anwendungen:

FC, IHC, IP, WB, ELISA

In Publikationen genannte Anwendungen:

CoIP, IF, IHC, IP, WB

Getestete Reaktivität:

Human, Maus, Ratte

Zitierte Arten:

Human, Maus, Ratte

**Hinweis-IHC: Antigendemaskierung mit TE-Puffer pH 9,0 empfohlen. (\*) Wahlweise kann die Antigendemaskierung auch mit Citratpuffer pH 6,0 erfolgen.**

Positivkontrollen:

WB: BxPC-3-Zellen, A431-Zellen, A549-Zellen, HeLa-Zellen, HT-29-Zellen, MCF-7-Zellen

IP: HeLa-Zellen,

IHC: humanes Pankreaskarzinomgewebe, humanes Mammakarzinomgewebe

## Hintergrundinformationen

Integrins are cell adhesion receptors that are heterodimers composed of non-covalently associated alpha and beta subunits. Integrin beta-4 is predominantly expressed in squamous epithelial cells, endothelial cells, immature thymocytes, Schwann cells, and fibroblasts of the peripheral nervous system (PMID: 28084395). Integrin beta-4 pairs with alpha-6, and the heterodimeric integrin alpha-6/beta-4 is a receptor for laminin. Integrin alpha-6/beta-4 plays a critical structural role in the hemidesmosome of epithelial cells, and also plays a role in the invasive and metastatic phenotype of various cancers.

## Bemerkenswerte Veröffentlichungen

Verfasser	Pubmed ID	Journal	Anwendung
Yueqi Li	30378153	J Cell Biochem	WB
Hongfei Liu	36293483	Int J Mol Sci	WB, IF
Junya Ning	36203272	Cell Adh Migr	WB

## Lagerung

Lagerungsbedingungen:

Bei -20°C lagern. Nach dem Versand ein Jahr lang stabil

Lagerungspuffer:

PBS mit 0.02% Natriumazid und 50% Glycerin pH 7.3.

Aliquotieren ist nicht notwendig bei -20°C Lagerung

\*\*\* 20ul-Größen enthalten 0.1% BSA

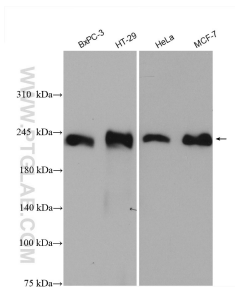
For technical support and original validation data for this product please contact:

T: 1 (888) 4PTGLAB (1-888-478-4522) (toll free in USA), or 1(312) 455-8498 (outside USA)

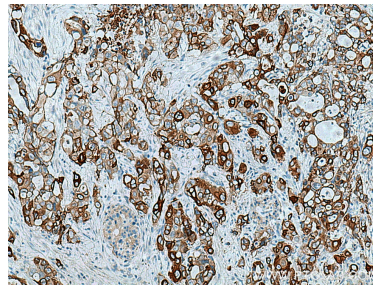
E: proteintech@ptglab.com  
W: ptglab.com

This product is exclusively available under Proteintech Group brand and is not available to purchase from any other manufacturer.

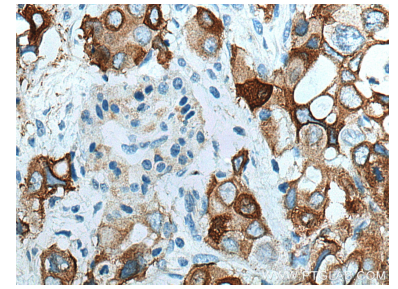
## Ausgewählte Validierungsdaten



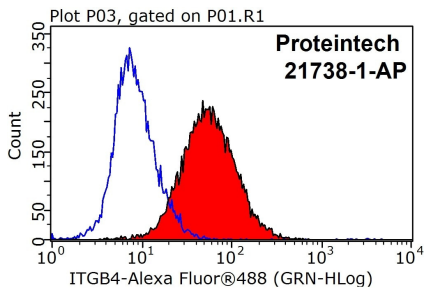
Various lysates were subjected to SDS PAGE followed by western blot with 21738-1-AP (Integrin beta-4 antibody) at dilution of 1:600 incubated at room temperature for 1.5 hours.



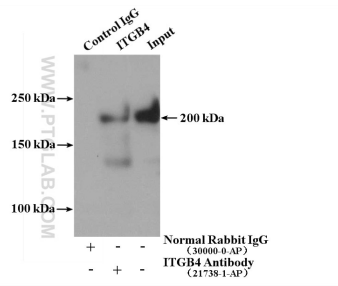
Immunohistochemical analysis of paraffin-embedded human pancreas cancer tissue slide using 21738-1-AP (Integrin beta-4 antibody) at dilution of 1:600 (under 10x lens). Heat mediated antigen retrieval with Tris-EDTA buffer (pH 9.0).



Immunohistochemical analysis of paraffin-embedded human pancreas cancer tissue slide using 21738-1-AP (Integrin beta-4 antibody) at dilution of 1:600 (under 40x lens). Heat mediated antigen retrieval with Tris-EDTA buffer (pH 9.0).



$1 \times 10^6$  HeLa cells were stained with 0.2ug Integrin beta-4 antibody (21738-1-AP, red) and control antibody (blue). Fixed with 90% MeOH blocked with 3% BSA (30 min). Alexa Fluor 488-conjugated AffiniPure Goat Anti-Rabbit IgG(H+L) with dilution 1:1000.



IP Result of anti-Integrin beta-4 (IP:21738-1-AP, 4ug; Detection:21738-1-AP 1:500) with HeLa cells lysate 2400ug.