

Allgemeine Informationen

Katalog-Nr.: 21771-1-AP	GenBank-Zugangsnummer: BC104232	Reinigungsmethode: Antigen-Affinitätsreinigung
Größe: 150ul, Konzentration: 400 µg/ml von Nanodrop und 240 µg/ml durch die Bradford-Methode mit BSA als Standard;	GeneID (NCBI): 353132	Empfohlene Verdünnungen: WB 1:500-1:2000 IHC 1:20-1:200 IF 1:20-1:200
Wirt: Kaninchen	Vollständiger Name: late cornified envelope 1B	
Isotyp: IgG	Berechnete Masse: 118 aa, 12 kDa	
Immunogen Katalognummer: AG16442	Beobachtete Masse: 10-12 kDa	

Anwendungen

Geprüfte Anwendungen: IF, IHC, WB, ELISA	Positivkontrollen:
Getestete Reaktivität: Human, Maus, Ratte	WB: A375-Zellen, Maushautgewebe, Rattenhautgewebe
Hinweis-IHC: Antigenmaskierung mit TE-Puffer pH 9,0 empfohlen. (*) Wahlweise kann die Antigenmaskierung auch mit Citratpuffer pH 6,0 erfolgen.	IHC: humanes Hautgewebe, humanes Ösophagusgewebe
	IF: A375-Zellen,

Hintergrundinformationen

Human LCE1B (Late cornified envelope protein 1B), also named late envelope protein 2 (LEP2), is located at human Chromosome1q21 which contains multiple LCE clusters. LCE1B gene is predicted to encode a 118-aa protein, and is currently evidenced at transcript level. Its expression was skin-specific and was readily detected in adult trunk skin, adult arm skin, fetal skin, penial skin, vulva, esophagus and tongue (PMID: 15854049). LCE genes respond to environmental stimuli such as calcium levels and ultraviolet (UV) light, however, LCE groups have distinct functions (PMID: 15854049).

Lagerung

Lagerungsbedingungen:
Bei -20°C lagern. Nach dem Versand ein Jahr lang stabil
Lagerungspuffer:
PBS mit 0.02% Natriumazid und 50% Glycerin pH 7.3.
Aliquotieren ist nicht notwendig bei -20°C Lagerung

*** 20ul-Größen enthalten 0.1% BSA

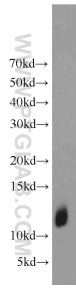
For technical support and original validation data for this product please contact:

T: 1 (888) 4PTGLAB (1-888-478-4522) (toll free in USA), or 1(312) 455-8498 (outside USA)

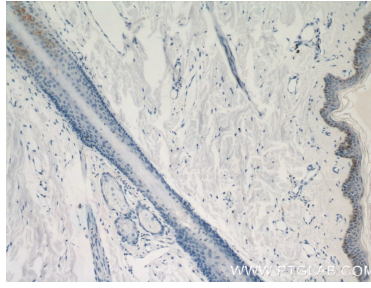
E: proteintech@ptglab.com
W: ptglab.com

This product is exclusively available under Proteintech Group brand and is not available to purchase from any other manufacturer.

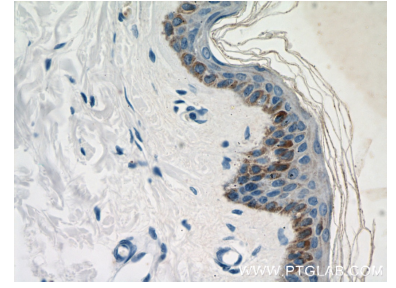
Ausgewählte Validierungsdaten



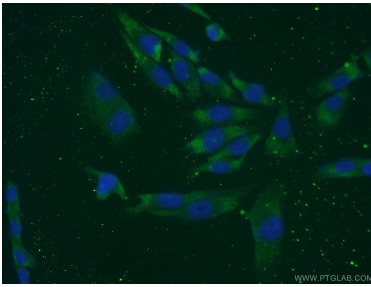
A375 cells were subjected to SDS PAGE followed by western blot with 21771-1-AP (LCE1B antibody) at dilution of 1:1000 incubated at room temperature for 1.5 hours.



Immunohistochemical analysis of paraffin-embedded human skin using 21771-1-AP (LCE1B antibody) at dilution of 1:50 (under 10x lens).



Immunohistochemical analysis of paraffin-embedded human skin using 21771-1-AP (LCE1B antibody) at dilution of 1:50 (under 40x lens).



Immunofluorescent analysis of A375 cells using 21771-1-AP (LCE1B antibody) at dilution of 1:50 and Alexa Fluor 488-conjugated AffiniPure Goat Anti-Rabbit IgG(H+L).