

Allgemeine Informationen

Katalog-Nr.:
21800-1-AP

Größe:
150ul, Konzentration: 800 µg/ml von Nanodrop und 367 µg/ml durch die Bradford-Methode mit BSA als Standard;

Wirt:
Kaninchen

Isotyp:
IgG

Immunogen Katalognummer:
AG16789

GenBank-Zugangsnummer:
BC010858

GeneID (NCBI):
2146

Vollständiger Name:
enhancer of zeste homolog 2 (Drosophila)

Berechnete Masse:
751 aa, 86 kDa

Beobachtete Masse:
90-102 kDa

Reinigungsmethode:

Antigen-Affinitätsreinigung

Empfohlene Verdünnungen:

IP 0.5-4.0 µg für IP und 1:500-1:2000 für WB
IF 1:20-1:200

Anwendungen

Geprüfte Anwendungen:

FC, IF, IP, ELISA

In Publikationen genannte Anwendungen:

CHIP, CoIP, IF, IP, RIP, WB

Getestete Reaktivität:

Human, Maus, Ratte

Zitierte Arten:

Hausschwein, Human, Maus, Ratte

Positivkontrollen:

IP : HepG2-Zellen,

IF : HepG2-Zellen,

Hintergrundinformationen

EZH2 (enhancer of zeste homologue 2, also known as KMT6) is a member of Polycomb group (PcG) family and encodes a histone methyl transferase that has an essential role in promoting histone H3 lysine 27 trimethylation (H3K27me3) and epigenetic gene silencing. EZH2 is important for cell proliferation and inhibition of cell differentiation, and is implicated in cancer progression. Overexpression of EZH2 is a marker of advanced and metastatic disease in many solid tumors, including prostate and breast cancer. This antibody detected EZH2 protein as a single band with a molecular weight (MW) of 91-100 kDa in multiple cell lines. The phosphorylation may result in the higher molecular weight (calculated MW as 80-86 kDa). (20935635, 21367748)

Bemerkenswerte Veröffentlichungen

Verfasser	Pubmed ID	Journal	Anwendung
Min Li	28970250	FASEB J	WB
Yan Sun	34564701	Cell Death Dis	WB
Qun Liu	36151333	Cancer Gene Ther	WB

Lagerung

Lagerungsbedingungen:

Bei -20°C lagern. Nach dem Versand ein Jahr lang stabil

Lagerungspuffer:

PBS mit 0.02% Natriumazid und 50% Glycerin pH 7.3.

Aliquotieren ist nicht notwendig bei -20°C Lagerung

*** 20ul-Größen enthalten 0.1% BSA

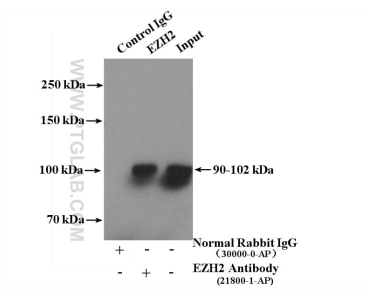
For technical support and original validation data for this product please contact:

T: 1 (888) 4PTGLAB (1-888-478-4522) (toll free in USA), or 1(312) 455-8498 (outside USA)

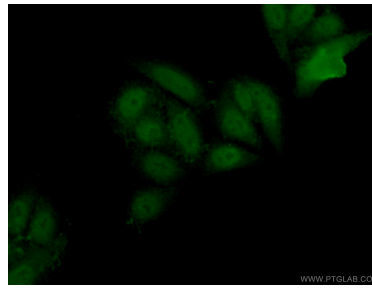
E: proteintech@ptglab.com
W: ptglab.com

This product is exclusively available under Proteintech Group brand and is not available to purchase from any other manufacturer.

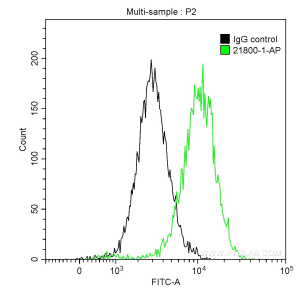
Ausgewählte Validierungsdaten



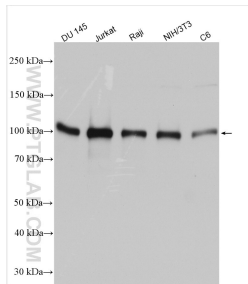
IP Result of anti-EZH2 (IP:21800-1-AP, 4ug; Detection:21800-1-AP 1:1000) with HepG2 cells lysate 3400ug.



Immunofluorescent analysis of (10% Formaldehyde) fixed HepG2 cells using 21800-1-AP (EZH2 antibody) at dilution of 1:50 and Alexa Fluor 488-conjugated AffiniPure Goat Anti-Rabbit IgG(H+L).



1X10⁶ HepG2 cells were intracellularly stained with 0.2 ug Anti-Human EZH2 (21800-1-AP) and CoraLite@488-Conjugated AffiniPure Goat Anti-Rabbit IgG(H+L) at dilution 1:1000 (green), and 0.2 ug Control Antibody. Cells were fixed with 4% PFA and permeabilized with 0.1% TritonX-100.



Various lysates were subjected to SDS PAGE followed by western blot with 21800-1-AP (EZH2 antibody) at dilution of 1:10000 incubated at room temperature for 1.5 hours.