

Nur für Forschungszwecke

GLUT1 Polyklonaler Antikörper

Katalog-Nr.: 21829-1-AP

Vorgestelltes Produkt

205 Publikationen



Allgemeine Informationen

Katalog-Nr.: 21829-1-AP	GenBank-Zugangsnummer: BC121804	Reinigungsmethode: Antigen-Affinitätsreinigung
Größe: 150ul, Konzentration: 600 µg/ml von Nanodrop;	GeneID (NCBI): 6513	Empfohlene Verdünnungen: WB 1:1000-1:8000 IHC 1:2500-1:10000 IF 1:200-1:800
Wirt: Kaninchen	Vollständiger Name: solute carrier family 2 (facilitated glucose transporter), member 1	
Isotyp: IgG	Berechnete Masse: 492 aa, 54 kDa	
Immunogen Katalognummer: AG16282	Beobachtete Masse: 45-55 kDa	

Anwendungen

Geprüfte Anwendungen:

FC, IF, IHC, WB, ELISA

In Publikationen genannte Anwendungen:

ChIP, FC, IF, IHC, WB

Getestete Reaktivität:

Human, Maus, Ratte

Zitierte Arten:

Hausschwein, Human, Maus, Ratte, Brandts Mongolische Wühlmaus (*Lasiopodomys Brandtii*)

Hinweis-IHC: Antigenmaskierung mit TE-Puffer pH 9,0 empfohlen. (*) Wahlweise kann die Antigenmaskierung auch mit Citratpuffer pH 6,0 erfolgen.

Positivkontrollen:

WB: HT-29-Zellen, bei 37°C inkubiertes Mause-Kolontgewebe

IHC: Rattenhirngewebe, humanes Lungenkarzinomgewebe, humanes Mammakarzinomgewebe, humanes Zervixkarzinomgewebe

IF: HeLa-Zellen,

Hintergrundinformationen

SLC2A1, also known as GLUT1, is a ubiquitously expressed glucose transporter and responsible for the basal level of glucose uptake in most cell types. Human erythrocytes express the highest level of the SLC2A1. Defects in SLC2A1 are the cause of GLUT1 deficiency syndrome type 1 and type 2. High expression of SLC2A1 has been reported to be a reliable immunohistochemical marker for juvenile hemangiomas. GLUT1 protein may appear as two or more distinct forms among 43 kDa to 55 kDa due to the different glycosylation state. And the conversion of highly glycosylated form of GLUT1 to less glycosylated form has been reported to correlate to differentiation (PMID: 8263524, 23302780). 21829-1-AP antibody can also detect the 25 kDa degradation protein in SDS-PAGE (PMID:18387950).

Bemerkenswerte Veröffentlichungen

Verfasser	Pubmed ID	Journal	Anwendung
Haoran Li	28990097	Mol Med Rep	
Krishna B Singh	31555797	Carcinogenesis	
Teresa W-M Fan	36150727	J Immunol	

Lagerung

Lagerungsbedingungen:

Bei -20°C lagern. Nach dem Versand ein Jahr lang stabil

Lagerungspuffer:

PBS mit 0.02% Natriumazid und 50% Glycerin pH 7.3.

Aliquotieren ist nicht notwendig bei -20°C Lagerung

*** 20ul-Größen enthalten 0.1% BSA

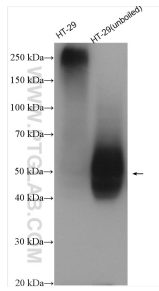
For technical support and original validation data for this product please contact:

T: 1 (888) 4PTGLAB (1-888-478-4522) (toll free in USA), or 1(312) 455-8498 (outside USA)

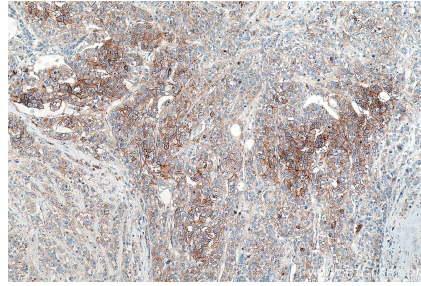
E: proteintech@ptglab.com
W: ptglab.com

This product is exclusively available under Proteintech Group brand and is not available to purchase from any other manufacturer.

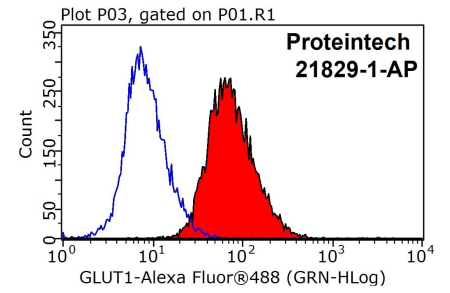
Ausgewählte Validierungsdaten



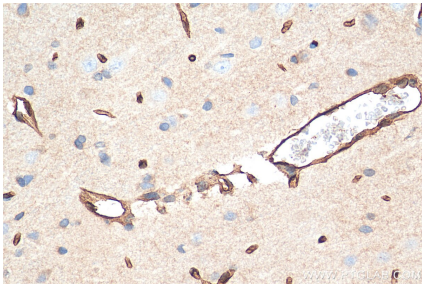
HT-29 cell lysates (boiled or unboiled) were subjected to SDS PAGE followed by western blot with 21829-1-AP (GLUT1 antibody) at dilution of 1:4000 incubated at room temperature for 1.5 hours.



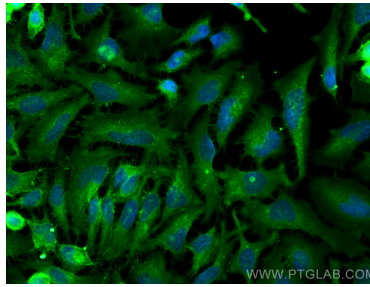
Immunohistochemical analysis of paraffin-embedded human breast cancer tissue slide using 21829-1-AP (GLUT1 antibody) at dilution of 1:1000 (under 10x lens). Heat mediated antigen retrieval with Tris-EDTA buffer (pH 9.0).



1X10⁶ HeLa cells were stained with 0.2ug SLC2A1, GLUT1 antibody (21829-1-AP, red) and control antibody (blue). Fixed with 90% MeOH blocked with 3% BSA (30 min). Alexa Fluor 488-conjugated AffiniPure Goat Anti-Rabbit IgG(H+L) with dilution 1:1000.



Immunohistochemical analysis of paraffin-embedded rat brain tissue slide using 21829-1-AP (GLUT1 antibody) at dilution of 1:5000 (under 40x lens). Heat mediated antigen retrieval with Tris-EDTA buffer (pH 9.0).



Immunofluorescent analysis of (-20°C Ethanol) fixed HeLa cells using GLUT1 antibody (21829-1-AP) at dilution of 1:400 and CoraLite@488-Conjugated AffiniPure Goat Anti-Rabbit IgG(H+L).