

Allgemeine Informationen

Katalog-Nr.: 21850-1-AP	GenBank-Zugangsnummer: BC113114	Reinigungsmethode: Antigen-Affinitätsreinigung
Größe: 150ul, Konzentration: 600 µg/ml von Nanodrop;	GeneID (NCBI): 6093	Empfohlene Verdünnungen: WB 1:5000-1:50000 IHC 1:50-1:500
Wirt: Kaninchen	Vollständiger Name: Rho-associated, coiled-coil containing protein kinase 1	
Isotyp: IgG	Berechnete Masse: 1354 aa, 158 kDa	
Immunogen Katalognummer: AG16317	Beobachtete Masse: 150-160 kDa	

Anwendungen

Geprüfte Anwendungen:

IF, IHC, WB, ELISA

In Publikationen genannte Anwendungen:

IF, IHC, WB

Getestete Reaktivität:

Human, Maus, Ratte

Zitierte Arten:

Human, Maus, Ratte

Hinweis-IHC: Antigendemaskierung mit TE-Puffer pH 9,0 empfohlen. (*) Wahlweise kann die Antigendemaskierung auch mit Citratpuffer pH 6,0 erfolgen.

Positivkontrollen:

WB: A431-Zellen, C6-Zellen, HEK-293T-Zellen, HeLa-Zellen, Jurkat-Zellen, NIH/3T3-Zellen, Ramos-Zellen

IHC: humanes Lymphomgewebe,

IF: HeLa-Zellen,

Hintergrundinformationen

ROCK1, also named as p160ROCK and NY-REN-35, belongs to the protein kinase superfamily and AGC Ser/Thr protein kinase family. ROCK1 phosphorylates and activates DAPK3, which then regulates myosin light chain phosphatase through phosphorylation of MYPT1 thereby regulating the assembly of the actin cytoskeleton, cell migration, invasiveness of tumor cells, smooth muscle contraction and neurite outgrowth. ROCK1 is required for centromere positioning and centromere-dependent exit from mitosis. It is necessary for apoptotic membrane blebbing. ROCK1 catalyzes the reaction: ATP + a protein = ADP + a phosphoprotein.

Bemerkenswerte Veröffentlichungen

Verfasser	Pubmed ID	Journal	Anwendung
Lichan Mao	36247873	Anal Cell Pathol (Amst)	WB
Xin Chen	32996285	J Cell Mol Med	WB
Kai Cui	27678468	Asian J Androl	WB,IHC

Lagerung

Lagerungsbedingungen:

Bei -20°C lagern. Nach dem Versand ein Jahr lang stabil

Lagerungspuffer:

PBS mit 0.02% Natriumazid und 50% Glycerin pH 7.3.

Aliquotieren ist nicht notwendig bei -20°C Lagerung

*** 20ul-Größen enthalten 0.1% BSA

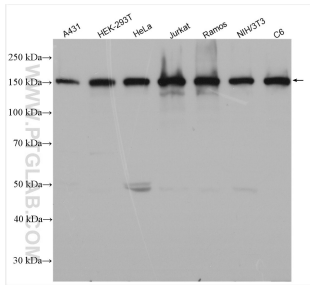
For technical support and original validation data for this product please contact:

T: 1 (888) 4PTGLAB (1-888-478-4522) (toll free in USA), or 1(312) 455-8498 (outside USA)

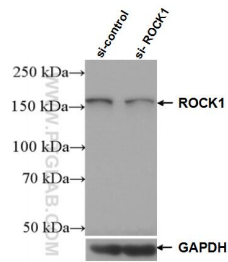
E: proteintech@ptglab.com
W: ptglab.com

This product is exclusively available under Proteintech Group brand and is not available to purchase from any other manufacturer.

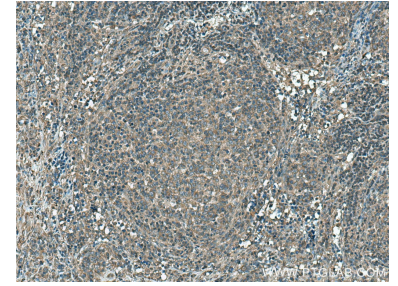
Ausgewählte Validierungsdaten



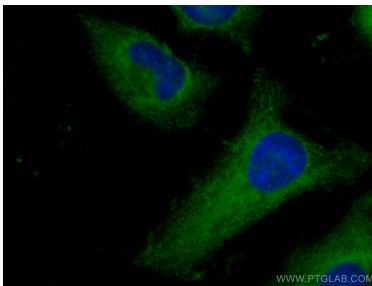
Various lysates were subjected to SDS PAGE followed by western blot with 21850-1-AP (ROCK1 antibody) at dilution of 1:10000 incubated at room temperature for 1.5 hours.



WB result of ROCK1 antibody (21850-1-AP; 1:5000; incubated at room temperature for 1.5 hours) with sh-Control and sh-ROCK1 transfected HeLa cells.



Immunohistochemical analysis of paraffin-embedded human lymphoma tissue slide using 21850-1-AP (ROCK1 antibody) at dilution of 1:200 (under 10x lens). Heat mediated antigen retrieval with Tris-EDTA buffer (pH 9.0).



Immunofluorescent analysis of (-20°C Ethanol) fixed HeLa cells using ROCK1 antibody (21850-1-AP) at dilution of 1:200 and CoraLite®488-Conjugated AffiniPure Goat Anti-Rabbit IgG(H+L).