

Nur für Forschungszwecke

IL-6 Polyklonaler Antikörper

Katalog-Nr.: 21865-1-AP

Vorgestelltes Produkt

461 Publikationen



Allgemeine Informationen

Katalog-Nr.: 21865-1-AP	GenBank-Zugangsnummer: BC015511	Reinigungsmethode: Antigen-Affinitätsreinigung
Größe: 150ul, Konzentration: 500 µg/ml von Nanodrop;	GeneID (NCBI): 3569	Empfohlene Verdünnungen: WB 1:500-1:2000
Wirt: Kaninchen	Vollständiger Name: interleukin 6 (interferon, beta 2)	
Isotyp: IgG	Berechnete Masse: 212 aa, 24 kDa	
Immunogen Katalognummer: AG10565	Beobachtete Masse: 20 kDa	

Anwendungen

Geprüfte Anwendungen: FC, WB, ELISA	Positivkontrollen: WB : mit LPS und Proteinttransportinhibitor behandelte HUVEC-Zellen,
In Publikationen genannte Anwendungen: Cell treatment, ELISA, IF, IHC, Neutralization	
Getestete Reaktivität: Human	
Zitierte Arten: Hausschwein, Human, Hund, Ziege	

Hintergrundinformationen

Interleukin-6 (IL-6) is an interleukin that acts as both a pro-inflammatory and anti-inflammatory cytokine. IL-6 protein is secreted by a variety of cell types including T cells and macrophages as phosphorylated and variably glycosylated molecule. IL-6 plays an essential role in the final differentiation of B-cells into Ig-secreting cells involved in lymphocyte and monocyte differentiation. It induces myeloma and plasmacytoma growth and induces nerve cells differentiation acts on B-cells, T-cells, hepatocytes, hematopoietic progenitor cells and cells of the CNS. IL-6 is also considered a myokine, a cytokine produced from muscle, and is elevated in response to muscle contraction. IL-6 has been shown to interact with interleukin-6 receptor and glycoprotein 130. Additionally, IL-6 is involved in hematopoiesis, bone metabolism, and cancer progression, and has been defined an essential role in directing transition from innate to acquired immunity.

Bemerkenswerte Veröffentlichungen

Verfasser	Pubmed ID	Journal	Anwendung
Yanliang Wu	34601083	J Ethnopharmacol	WB
Qian Chen	32997272	J Nat Med	WB
Donghui Yang	32996162	J Cell Physiol	WB

Lagerung

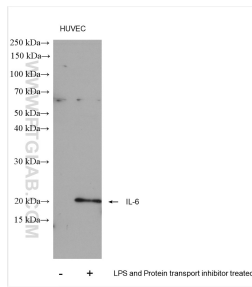
Lagerungsbedingungen:
Bei -20°C lagern. Nach dem Versand ein Jahr lang stabil
Lagerungspuffer:
PBS mit 0.02% Natriumazid und 50% Glycerin pH 7.3.
Aliquotieren ist nicht notwendig bei -20°C Lagerung

*** 20ul-Größen enthalten 0.1% BSA

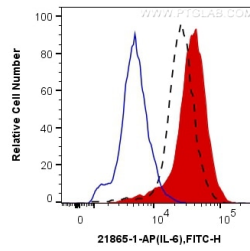
For technical support and original validation data for this product please contact:
T: 1 (888) 4PTGLAB (1-888-478-4522) (toll free in USA), or 1(312) 455-8498 (outside USA)
E: proteintech@ptglab.com
W: ptglab.com

This product is exclusively available under Proteintech Group brand and is not available to purchase from any other manufacturer.

Ausgewählte Validierungsdaten



Untreated HUVEC cells, HUVEC cells (treated with 0.5 µg/ml LPS for 24 hours, then add 300 ng/ml protein transport inhibitor last 20 hours) were subjected to SDS PAGE followed by western blot with 21865-1-AP (IL-6 antibody) at dilution of 1:1000 incubated at room temperature for 1.5 hours.



1×10^6 HUVEC cells untreated (dashed lines), LPS and Brefeldin A treated (red) were intracellularly stained with 0.5 µg Anti-Human IL-6 (21865-1-AP) and CoraLite®488-Conjugated AffiniPure Goat Anti-Rabbit IgG(H+L) at dilution 1:1000, or 0.5 µg Control Antibody (blue). Cells were fixed with 4% PFA and permeabilized with Intracellular Staining Permeabilization Wash Buffer.