

Nur für Forschungszwecke

DELE1 Polyklonaler Antikörper

Katalog-Nr.: 21904-1-AP

2 Publikationen



Allgemeine Informationen

Katalog-Nr.: 21904-1-AP	GenBank-Zugangsnummer: BC007855	Reinigungsmethode: Antigen-Affinitätsreinigung
Größe: 150ul, Konzentration: 1000 µg/ml von 9812 Nanodrop und 360 µg/ml durch die Bradford-Methode mit BSA als Standard;	GeneID (NCBI): KIAA0141	Empfohlene Verdünnungen: WB 1:200-1:1000
Wirt: Kaninchen	Vollständiger Name: KIAA0141	
Isotyp: IgG	Berechnete Masse: 515 aa, 56 kDa	
Immunogen Katalognummer: AG14615	Beobachtete Masse: 56 kDa	

Anwendungen

Geprüfte Anwendungen: WB, ELISA	Positivkontrollen: WB: Mauslungengewebe,
In Publikationen genannte Anwendungen: WB	
Getestete Reaktivität: Human, Maus	
Zitierte Arten: Maus	

Hintergrundinformationen

DELE1, also known as KIAA0141, is a 515 amino acid protein, which localizes in Mitochondrion and is detected in liver, skeletal muscle, kidney, pancreas, spleen, thyroid, testis, ovary, small intestine and colon. DELE1 is essential for the induction of death receptor-mediated apoptosis through the regulation of caspase activation. Mitochondrial malfunction needs to be relayed to the cytosol, where an integrated stress response is triggered by the phosphorylation of eukaryotic translation initiation factor 2a (eIF2a) in mammalian cells. eIF2a phosphorylation is mediated by the four eIF2a kinases GCN2, HRI, PERK and PKR, which are activated by diverse types of cellular stress. OMA1, a mitochondrial stress-activated protease; and DELE1, a little-characterized protein that we found was associated with the inner mitochondrial membrane. Mitochondrial stress stimulates OMA1-dependent cleavage of DELE1 and leads to the accumulation of DELE1 in the cytosol, where it interacts with HRI and activates the eIF2a kinase activity of HRI. In addition, DELE1 is required for ATF4 translation downstream of eIF2a phosphorylation.

Bemerkenswerte Veröffentlichungen

Verfasser	Pubmed ID	Journal	Anwendung
Jiahui Tang	36290724	Antioxidants (Basel)	WB
Xiaoyan Guo	32132707	Nature	WB

Lagerung

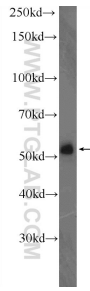
Lagerungsbedingungen:
Bei -20°C lagern. Nach dem Versand ein Jahr lang stabil
Lagerungspuffer:
PBS mit 0.02% Natriumazid und 50% Glycerin pH 7.3.
Aliquotieren ist nicht notwendig bei -20°C Lagerung

*** 20ul-Größen enthalten 0.1% BSA

For technical support and original validation data for this product please contact:
T: 1 (888) 4PTGLAB (1-888-478-4522) (toll free in USA), or 1(312) 455-8498 (outside USA)
E: proteintech@ptglab.com
W: ptglab.com

This product is exclusively available under Proteintech Group brand and is not available to purchase from any other manufacturer.

Ausgewählte Validierungsdaten



mouse lung tissue were subjected to SDS PAGE followed by western blot with 21904-1-AP (KIAA0141 Antibody) at dilution of 1:300 incubated at room temperature for 1.5 hours.