

Nur für Forschungszwecke

SP1 Polyklonaler Antikörper

Katalog-Nr.: 21962-1-AP

Vorgestelltes Produkt

76 Publikationen



Allgemeine Informationen

Katalog-Nr.:

21962-1-AP

Größe:

150ul, Konzentration: 700 µg/ml von Nanodrop;

Wirt:

Kaninchen

Isotyp:

IgG

Immunogen Katalognummer:

AG16720

GenBank-Zugangsnummer:

BC062539

GeneID (NCBI):

6667

Vollständiger Name:

Sp1 transcription factor

Berechnete Masse:

785 aa, 81 kDa

Beobachtete Masse:

95-106 kDa

Reinigungsmethode:

Antigen-Affinitätsreinigung

Empfohlene Verdünnungen:

WB 1:2000-1:16000

IP 0.5-4.0 µg für IP und 1:500-1:1000

für WB

IHC 1:50-1:500

IF 1:20-1:200

Anwendungen

Geprüfte Anwendungen:

IF, IHC, IP, WB, ELISA

In Publikationen genannte Anwendungen:

ChIP, CoIP, IF, IHC, IP, WB

Getestete Reaktivität:

Affe, Human, Maus, Ratte

Zitierte Arten:

Affe, Hausschwein, Human, Maus, Ratte

Hinweis-IHC: Antigendemaskierung mit TE-Puffer pH 9,0 empfohlen. (*) Wahlweise kann die Antigendemaskierung auch mit Citratpuffer pH 6,0 erfolgen.

Positivkontrollen:

WB: Jurkat-Zellen, A431-Zellen, HEK-293-Zellen, HeLa-Zellen, K-562-Zellen

IP: A431-Zellen,

IHC: humanes Lungenkarzinomgewebe, humanes Kolongewebe, humanes Magenkrebsgewebe

IF: HeLa-Zellen,

Hintergrundinformationen

The transcription factor Sp1 is a C2H2 zinc-finger protein that is involved in the regulation of a wide variety of genes, including housekeeping genes and tumor-developing genes. It is associated with tumor development, growth, and metastasis [PMID: 16209919]. It regulates the expression of a large number of genes involved in a variety of processes such as cell growth, apoptosis, differentiation and immune responses. Besides, it has a role in modulating the cellular response to DNA damage, recruiting SMARCA4/BRG1 on the c-FOS promoter, regulation of FE65 gene expression [PMID:11371615,16332679]. SP1 is detected with MW 95-105 kDa and 65 kDa in this paper (PMID: 10618488).

Bemerkenswerte Veröffentlichungen

Verfasser	Pubmed ID	Journal	Anwendung
Yongchun Yu	36183674	Transl Oncol	WB, ChIP
Faisal Aziz	26427350	Toxicol In Vitro	WB, IHC
Liping Wang	34559939	IUBMB Life	WB

Lagerung

Lagerungsbedingungen:

Bei -20°C lagern. Nach dem Versand ein Jahr lang stabil

Lagerungspuffer:

PBS mit 0.02% Natriumazid und 50% Glycerin pH 7.3.

Aliquotieren ist nicht notwendig bei -20°C Lagerung

***** 20ul-Größen enthalten 0.1% BSA**

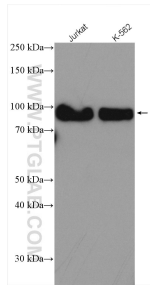
For technical support and original validation data for this product please contact:

T: 1 (888) 4PTGLAB (1-888-478-4522) (toll free in USA), or 1(312) 455-8498 (outside USA)

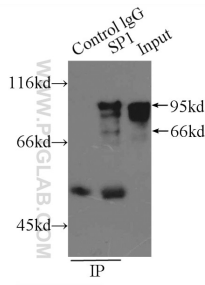
E: proteintech@ptglab.com
W: ptglab.com

This product is exclusively available under Proteintech Group brand and is not available to purchase from any other manufacturer.

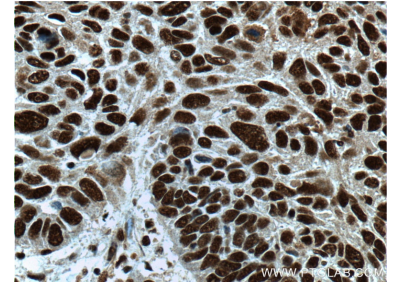
Ausgewählte Validierungsdaten



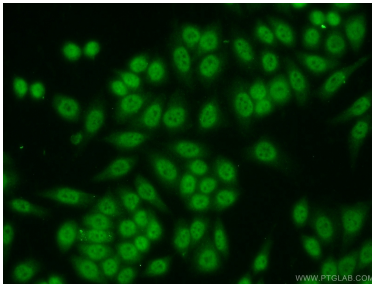
Various lysates were subjected to SDS PAGE followed by western blot with 21962-1-AP (SP1 antibody) at dilution of 1:8000 incubated at room temperature for 1.5 hours.



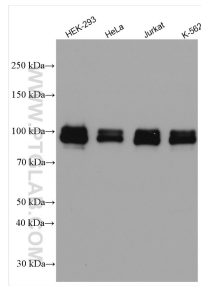
IP Result of anti-SP1 (IP:21962-1-AP, 6ug; Detection:21962-1-AP 1:500) with A431 cells lysate 2500ug.



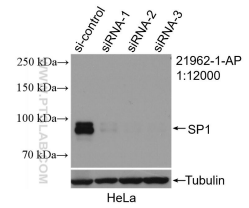
Immunohistochemical analysis of paraffin-embedded human lung cancer tissue slide using 21962-1-AP (SP1 Antibody) at dilution of 1:200 (under 40x lens).



Immunofluorescent analysis of HeLa cells using 21962-1-AP (SP1 antibody) at dilution of 1:50 and Alexa Fluor 488-conjugated AffiniPure Goat Anti-Rabbit IgG(H+L).



Various lysates were subjected to SDS PAGE followed by western blot with 21962-1-AP (SP1 antibody) at dilution of 1:8000 incubated at room temperature for 1.5 hours.



WB result of SP1 antibody (21962-1-AP; 1:12000; incubated at room temperature for 1.5 hours) with sh-Control and sh-SP1 transfected HeLa cells.