

Nur für Forschungszwecke

Annexin A1 Polyklonaler Antikörper



Katalog-Nr.: 21990-1-AP

Vorgestelltes Produkt

25 Publikationen

Allgemeine Informationen

Katalog-Nr.: 21990-1-AP	GenBank-Zugangsnummer: BC001275	Reinigungsmethode: Antigen-Affinitätsreinigung
Größe: 150ul, Konzentration: 450 µg/ml von Nanodrop;	GeneID (NCBI): 301	Empfohlene Verdünnungen: WB 1:5000-1:50000 IP 0.5-4.0 µg für IP und 1:1000-1:4000 für WB
Wirt: Kaninchen	Vollständiger Name: annexin A1	IHC 1:50-1:500 IF 1:200-1:800
Isotyp: IgG	Berechnete Masse: 346 aa, 39 kDa	
Immunogen Katalognummer: AG17273	Beobachtete Masse: 37 kDa	

Anwendungen

Geprüfte Anwendungen:
FC, IF, IHC, IP, WB, ELISA

In Publikationen genannte Anwendungen:
IF, IHC, IP, WB

Getestete Reaktivität:
Human, Maus, Ratte

Zitierte Arten:
Human, Maus, Ratte, Rind

Hinweis-IHC: Antigendemaskierung mit TE-Puffer pH 9,0 empfohlen. (*) Wahlweise kann die Antigendemaskierung auch mit Citratpuffer pH 6,0 erfolgen.

Positivkontrollen:

WB: A431-Zellen, A549-Zellen, C6-Zellen, HeLa-Zellen, HepG2-Zellen, K-562-Zellen, MCF-7-Zellen, MDA-MB-453s-Zellen, Multizellen, NIH/3T3-Zellen, U-937-Zellen

IP: HeLa-Zellen,

IHC: humanes Ösophagusgewebe, humanes Dünndarmgewebe, humanes Lungengewebe, humanes Nierengewebe, humanes Ovarialkarzinomgewebe

IF: A549-Zellen, A431-Zellen

Hintergrundinformationen

ANXA1, also named as ANX1, LPC1 and p35, belongs to the annexin family. It is a member of the annexin family of Ca²⁺-binding and phospholipidbinding proteins, and it is particularly abundant in various populations of peripheral blood leukocytes. ANXA1 regulates phospholipase A2 activity. It seems to bind from two to four calcium ions with high affinity. ANXA1 is a pleiotrophic protein produced by many cell types including peripheral blood leucocytes.

Bemerkenswerte Veröffentlichungen

Verfasser	Pubmed ID	Journal	Anwendung
Chuming Jia	30292410	Biochem Biophys Res Commun	WB,IHC
Manhui Zhu	34595678	Inflammation	WB
Lin Yuan	34781202	Biochem Biophys Res Commun	WB

Lagerung

Lagerungsbedingungen:

Bei -20°C lagern. Nach dem Versand ein Jahr lang stabil

Lagerungspuffer:

PBS mit 0.02% Natriumazid und 50% Glycerin pH 7.3.

Aliquotieren ist nicht notwendig bei -20°C Lagerung

***** 20ul-Größen enthalten 0.1% BSA**

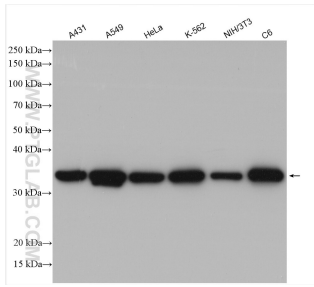
For technical support and original validation data for this product please contact:

T: 1 (888) 4PTGLAB (1-888-478-4522) (toll free in USA), or 1(312) 455-8498 (outside USA)

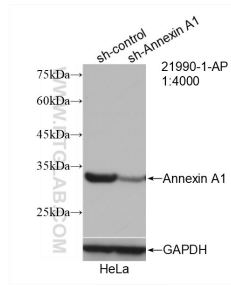
E: proteintech@ptglab.com
W: ptglab.com

This product is exclusively available under Proteintech Group brand and is not available to purchase from any other manufacturer.

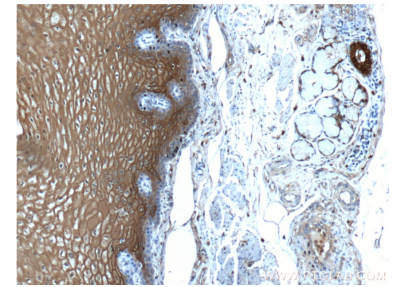
Ausgewählte Validierungsdaten



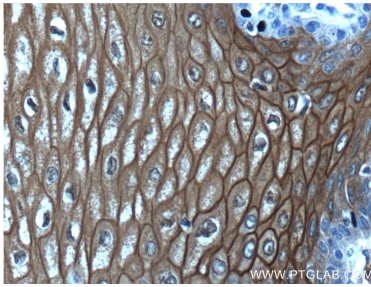
Various lysates were subjected to SDS PAGE followed by western blot with 21990-1-AP (Annexin A1 antibody) at dilution of 1:25000 incubated at room temperature for 1.5 hours.



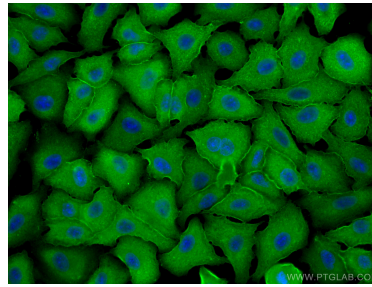
WB result of Annexin A1 antibody (21990-1-AP; 1:4000; incubated at room temperature for 1.5 hours) with sh-Control and sh-Annexin A1 transfected HeLa cells.



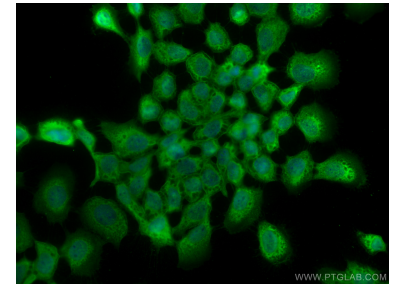
Immunohistochemical analysis of paraffin-embedded human oesophagus tissue slide using 21990-1-AP (Annexin A1 antibody at dilution of 1:200 (under 10x lens).



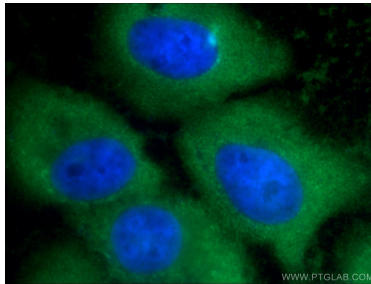
Immunohistochemical analysis of paraffin-embedded human oesophagus tissue slide using 21990-1-AP (Annexin A1 antibody at dilution of 1:200 (under 40x lens).



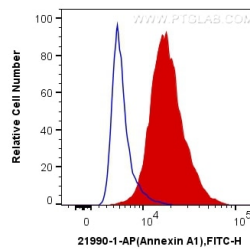
Immunofluorescent analysis of (-20°C Methanol) fixed A549 cells using Annexin A1 antibody (21990-1-AP) at dilution of 1:400 and CoraLite®488-Conjugated AffiniPure Goat Anti-Rabbit IgG(H+L).



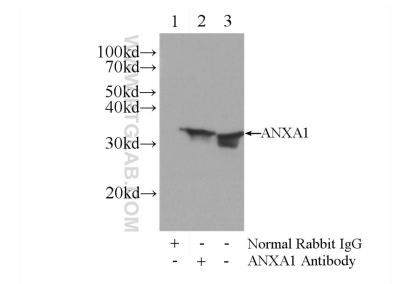
Immunofluorescent analysis of (-20°C Methanol) fixed A431 cells using Annexin A1 antibody (21990-1-AP) at dilution of 1:400 and CoraLite®488-Conjugated AffiniPure Goat Anti-Rabbit IgG(H+L).



Immunofluorescent analysis of A431 cells using 21990-1-AP (Annexin A1 antibody) at dilution of 1:100 and Alexa Fluor 488-conjugated AffiniPure Goat Anti-Rabbit IgG(H+L).



1×10^6 NIH/3T3 cells were intracellularly stained with 0.2 ug Anti-Human Annexin A1 (21990-1-AP) and CoraLite®488-Conjugated AffiniPure Goat Anti-Rabbit IgG(H+L) at dilution 1:1000 (red), or 0.2 ug Control Antibody. Cells were fixed with 4% PFA and permeabilized with Flow Cytometry Perm Buffer (PF00011-C).



IP Result of anti-Annexin A1 (IP:21990-1-AP, 3ug; Detection:21990-1-AP 1:2000) with HeLa cells lysate 2400ug.