

Nur für Forschungszwecke

Integrin Alpha 3 Polyklonaler Antikörper



Katalog-Nr.: 21992-1-AP

Vorgestelltes Produkt

2 Publikationen

Allgemeine Informationen

Katalog-Nr.:

21992-1-AP

Größe:

150ul, Konzentration: 400 µg/ml von Nanodrop und 280 µg/ml durch die Bradford-Methode mit BSA als Standard;

Wirt:

Kaninchen

Isotyp:

IgG

Immunogen Katalognummer:

AG17293

GenBank-Zugangsnummer:

BC150190

GeneID (NCBI):

3675

Vollständiger Name:

integrin, alpha 3 (antigen CD49C, alpha 3 subunit of VLA-3 receptor)

Berechnete Masse:

1066 aa, 119 kDa

Beobachtete Masse:

120 kDa

Reinigungsmethode:

Antigen-Affinitätsreinigung

Empfohlene Verdünnungen:

WB 1:500-1:1000
IP 0.5-4.0 µg für IP und 1:500-1:1000 für WB
IHC 1:50-1:500
IF 1:20-1:200

Anwendungen

Geprüfte Anwendungen:

FC, IF, IHC, IP, WB, ELISA

In Publikationen genannte Anwendungen:

IF, WB

Getestete Reaktivität:

Human, Maus

Zitierte Arten:

Human, Maus

Hinweis-IHC: Antigendemaskierung mit TE-Puffer pH 9,0 empfohlen. (*) Wahlweise kann die Antigendemaskierung auch mit Citratpuffer pH 6,0 erfolgen.

Positivkontrollen:

WB : PC-3-Zellen, A549-Zellen

IP : PC-3-Zellen,

IHC : Maus-Kolongewebe,

IF : A549-Zellen,

Hintergrundinformationen

ITGA3, also named as MSK18, CD49c, GAPB3 and FRP-2, belongs to the integrin alpha chain family. It is a receptor for fibronectin, laminin, collagen, epiligrin, thrombospondin and CSPG4. ITGA3 may mediate with LGALS3 the stimulation by CSPG4 of endothelial cells migration. ITGA3 is highly concentrated in epithelial cells where it strongly adheres to Laminin-5 and Laminin-5 induced rapid adhesion can be blocked by antibodies against the alpha-3 integrin subunit. It can be cleaved into heavy chain(840aa) and light chain(176aa). This antibody can recognize the heavy chain.

Bemerkenswerte Veröffentlichungen

| Verfasser | Pubmed ID | Journal | Anwendung |
|--------------|-----------|-------------|-----------|
| Eunnyung Bae | 35879332 | Nat Commun | WB,IF |
| Qiqiao Du | 32117712 | Front Oncol | WB |

Lagerung

Lagerungsbedingungen:

Bei -20°C lagern. Nach dem Versand ein Jahr lang stabil

Lagerungspuffer:

PBS mit 0.02% Natriumazid und 50% Glycerin pH 7.3.

Aliquotieren ist nicht notwendig bei -20°C Lagerung

*** 20ul-Größen enthalten 0.1% BSA

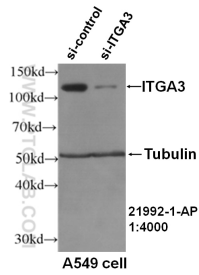
For technical support and original validation data for this product please contact:

T: 1 (888) 4PTGLAB (1-888-478-4522) (toll free in USA), or 1(312) 455-8498 (outside USA)

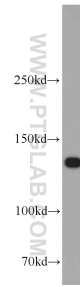
E: proteintech@ptglab.com
W: ptglab.com

This product is exclusively available under Proteintech Group brand and is not available to purchase from any other manufacturer.

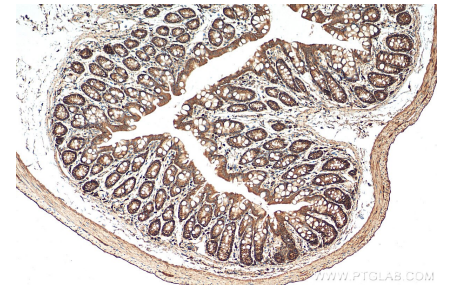
Ausgewählte Validierungsdaten



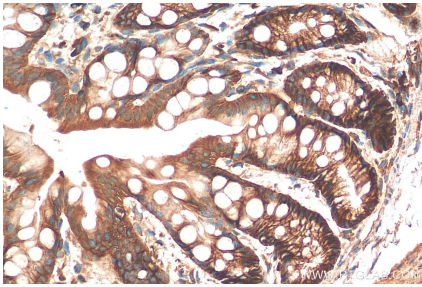
WB result of ITGA3 antibody (21992-1-AP, 1:4000) with si-control and si-ITGA3 transfected A549 cells.



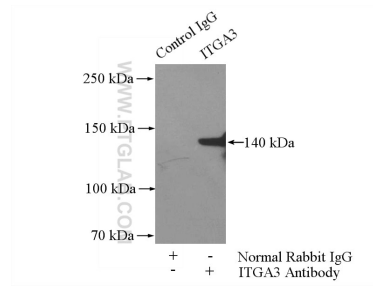
PC-3 cells were subjected to SDS PAGE followed by western blot with 21992-1-AP (ITGA3 antibody) at dilution of 1:500 incubated at room temperature for 1.5 hours.



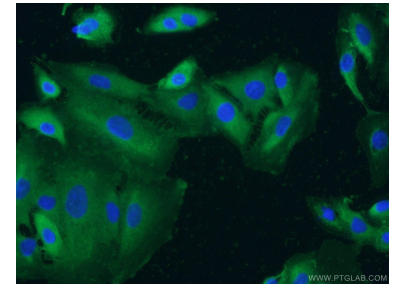
Immunohistochemical analysis of paraffin-embedded mouse colon tissue slide using 21992-1-AP (Integrin Alpha 3 antibody) at dilution of 1:200 (under 10x lens). Heat mediated antigen retrieval with Tris-EDTA buffer (pH 9.0).



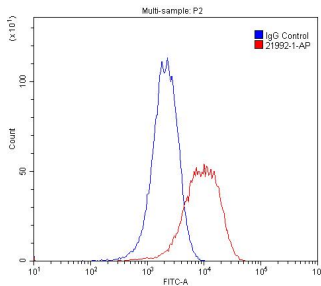
Immunohistochemical analysis of paraffin-embedded mouse colon tissue slide using 21992-1-AP (Integrin Alpha 3 antibody) at dilution of 1:200 (under 40x lens). Heat mediated antigen retrieval with Tris-EDTA buffer (pH 9.0).



IP Result of anti-Integrin alpha-3 (IP:21992-1-AP, 4ug; Detection:21992-1-AP 1:500) with PC-3 cells lysate 1200ug.



Immunofluorescent analysis of A549 cells using 21992-1-AP (Integrin alpha-3 antibody) at dilution of 1:50 and Alexa Fluor 488-conjugated AffiniPure Goat Anti-Rabbit IgG(H+L).



1×10^6 PC-3 cells were stained with 0.2ug Integrin alpha-3 antibody (21992-1-AP, red) and control antibody (blue). Fixed with 4% PFA blocked with 3% BSA (30 min). Alexa Fluor 488-conjugated AffiniPure Goat Anti-Rabbit IgG(H+L) with dilution 1:1500.