

Nur für Forschungszwecke

TBP Polyklonaler Antikörper

Katalog-Nr.: 22006-1-AP

59 Publikationen



Allgemeine Informationen

Katalog-Nr.: 22006-1-AP	GenBank-Zugangsnummer: BC110341	Reinigungsmethode: Antigen-Affinitätsreinigung
Größe: 150ul, Konzentration: 450 µg/ml von Nanodrop;	GeneID (NCBI): 6908	Empfohlene Verdünnungen: WB 1:500-1:3000 IP 0.5-4.0 µg für IP und 1:500-1:1000 für WB IHC 1:50-1:500
Wirt: Kaninchen	Vollständiger Name: TATA box binding protein	
Isotyp: IgG	Berechnete Masse: 338 aa, 38 kDa	
Immunogen Katalognummer: AG12383	Beobachtete Masse: mouse/rat 33-36 kDa and human 37-43kDa	

Anwendungen

Geprüfte Anwendungen: IHC, IP, WB, ELISA	Positivkontrollen: WB: COLO 320-Zellen, IP: COLO 320-Zellen, IHC: humanes Mammakarzinomgewebe,
In Publikationen genannte Anwendungen: IF, WB	
Getestete Reaktivität: Human, Maus	
Zitierte Arten: Affe, Hausschwein, Human, Maus, Ratte	

Hinweis-IHC: Antigenmaskierung mit TE-Puffer pH 9,0 empfohlen. (*) Wahlweise kann die Antigenmaskierung auch mit Citratpuffer pH 6,0 erfolgen.

Hintergrundinformationen

The TATA binding protein (TBP) is a transcription factor that binds specifically to a DNA sequence TATA box. This DNA sequence is found about 25-30 base pairs upstream of the transcription start site in some eukaryotic gene promoters. TBP, along with a variety of TBP-associated factors, make up the TFIID, a general transcription factor that in turn makes up part of the RNA polymerase II preinitiation complex. As one of the few proteins in the preinitiation complex that binds DNA in a sequence-specific manner, it helps position RNA polymerase II over the transcription start site of the gene. However, it is estimated that only 10-20% of human promoters have TATA boxes. Therefore, TBP is probably not the only protein involved in positioning RNA polymerase II. This antibody recognizes human TBP with MW 40 kDa and mouse/rat Tbp with MW 34 kDa.

Bemerkenswerte Veröffentlichungen

Verfasser	Pubmed ID	Journal	Anwendung
Qi Xiao	28944825	Mol Med Rep	WB
Qiu Zhong	36132230	Oxid Med Cell Longev	WB
Chang Wang	33013689	Front Endocrinol (Lausanne)	WB

Lagerung

Lagerungsbedingungen:
Bei -20°C lagern. Nach dem Versand ein Jahr lang stabil
Lagerungspuffer:
PBS mit 0.02% Natriumazid und 50% Glycerin pH 7.3.
Aliquotieren ist nicht notwendig bei -20°C Lagerung

*** 20ul-Größen enthalten 0.1% BSA

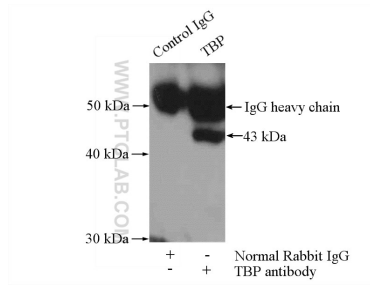
For technical support and original validation data for this product please contact:
T: 1 (888) 4PTGLAB (1-888-478-4522) (toll free in USA), or 1(312) 455-8498 (outside USA)
E: proteintech@ptglab.com
W: ptglab.com

This product is exclusively available under Proteintech Group brand and is not available to purchase from any other manufacturer.

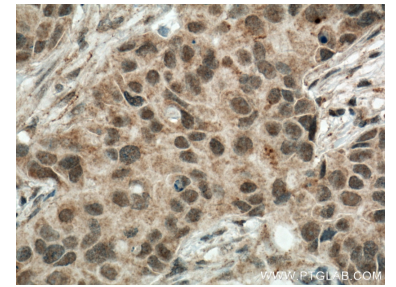
Ausgewählte Validierungsdaten



COLO 320 cells were subjected to SDS PAGE followed by western blot with 22006-1-AP (TBP antibody) at dilution of 1:1000 incubated at room temperature for 1.5 hours.



IP Result of anti-TBP (IP:22006-1-AP, 4ug; Detection:22006-1-AP 1:500) with COLO 320 cells lysate 400ug.



Immunohistochemical analysis of paraffin-embedded human breast cancer tissue slide using 22006-1-AP (TBP Antibody) at dilution of 1:200 (under 40x lens). Heat mediated antigen retrieved with Sodium Citrate buffer (pH 6.0).