

Allgemeine Informationen

Katalog-Nr.: 22008-1-AP	GenBank-Zugangsnummer: BC073983	Reinigungsmethode: Antigen-Affinitätsreinigung
Größe: 150ul , Konzentration: 700 µg/ml von Nanodrop;	GeneID (NCBI): 1958	Empfohlene Verdünnungen: WB 1:1000-1:5000 IHC 1:50-1:500 IF 1:50-1:500
Wirt: Kaninchen	Vollständiger Name: early growth response 1	
Isotyp: IgG	Berechnete Masse: 543 aa, 58 kDa	
Immunogen Katalognummer: AG13395	Beobachtete Masse: 68-70 kDa	

Anwendungen

Geprüfte Anwendungen:

IF, IHC, WB, ELISA

In Publikationen genannte Anwendungen:

ELISA, IF, IHC, WB

Getestete Reaktivität:

Human, Maus

Zitierte Arten:

Human, Maus, Ratte

Positivkontrollen:

WB : HeLa-Zellen, Jurkat-Zellen, Ramos-Zellen

IHC : humanes Ovarialkarzinomgewebe,

IF : Maushirngewebe,

Hinweis-IHC: Antigenmaskierung mit TE-Puffer pH 9,0 empfohlen. (*) Wahlweise kann die Antigenmaskierung auch mit Citratpuffer pH 6,0 erfolgen.

Hintergrundinformationen

EGR1, also named as Early growth response protein 1, is a 543 amino acid protein, which belongs to the EGR C2H2-type zinc-finger protein family. EGR1 as a transcriptional regulator recognizes and binds to the DNA sequence 5'-GCC(T/G)GGCG-3'(EGR-site) in the promoter region of target genes and binds double-stranded target DNA, irrespective of the cytosine methylation status. EGR1 regulates the transcription of numerous target genes, and thereby plays an important role in regulating the response to growth factors, DNA damage, and ischemia. EGR1 activates expression of p53/TP53 and TGFB1, and thereby helps prevent tumor formation and plays a role in the regulation of cell survival, proliferation and cell death. Egr1 is suggested to be a 55-kDa protein according to the translation of its coding sequence. Analysis of cytoplasmic and nuclear fractions of normal and irradiated native CNS tissue by Western blotting revealed a 110-kDa band for Egr1 localized in the cytoplasm and a 75-kDa version for the nuclear Egr1(PMID: 17497096).

Bemerkenswerte Veröffentlichungen

Verfasser	Pubmed ID	Journal	Anwendung
Ningxin Zhang	36278223	Front Pharmacol	WB,IHC
Qingsong Huang	28881635	Oncotarget	WB
Fu Qi	35782903	Oncol Lett	WB

Lagerung

Lagerungsbedingungen:

Bei -20°C lagern. Nach dem Versand ein Jahr lang stabil

Lagerungspuffer:

PBS mit 0.02% Natriumazid und 50% Glycerin pH 7.3.

Aliquotieren ist nicht notwendig bei -20°C Lagerung

*** 20ul-Größen enthalten 0.1% BSA

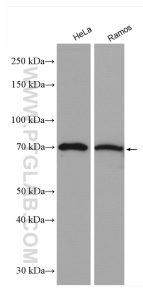
For technical support and original validation data for this product please contact:

T: 1 (888) 4PTGLAB (1-888-478-4522) (toll free in USA), or 1(312) 455-8498 (outside USA)

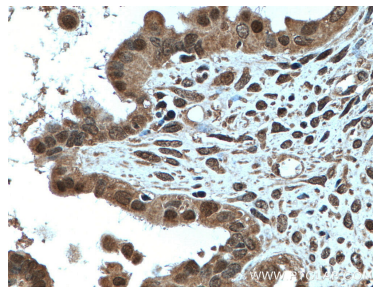
E: proteintech@ptglab.com
 W: ptglab.com

This product is exclusively available under Proteintech Group brand and is not available to purchase from any other manufacturer.

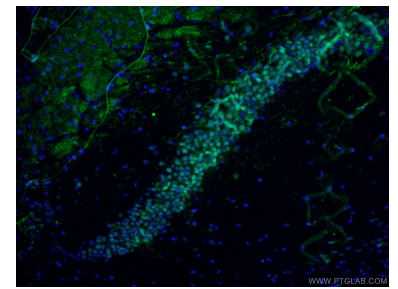
Ausgewählte Validierungsdaten



Various lysates were subjected to SDS PAGE followed by western blot with 22008-1-AP (EGR1 antibody) at dilution of 1:2500 incubated at room temperature for 1.5 hours.



Immunohistochemical analysis of paraffin-embedded human ovary tumor tissue slide using 22008-1-AP (EGR1 antibody) at dilution of 1:200 (under 40x lens. Heat mediated antigen retrieval with Tris-EDTA buffer (pH 9.0).



Immunofluorescent analysis of (4% PFA) fixed mouse brain tissue using 22008-1-AP (EGR1 antibody) at dilution of 1:50 and Alexa Fluor 488-conjugated AffiniPure Goat Anti-Rabbit IgG(H+L).