

Nur für Forschungszwecke

PHF20 Polyklonaler Antikörper

Katalog-Nr.: 22010-1-AP

1 Publikationen



Allgemeine Informationen

Katalog-Nr.: 22010-1-AP	GenBank-Zugangsnummer: BC150178	Reinigungsmethode: Antigen-Affinitätsreinigung
Größe: 150ul, Konzentration: 800 µg/ml von Nanodrop und 273 µg/ml durch die Bradford-Methode mit BSA als Standard;	GeneID (NCBI): 51230	Empfohlene Verdünnungen: WB 1:500-1:2000 IF 1:50-1:500
Wirt: Kaninchen	Vollständiger Name: PHD finger protein 20	
Isotyp: IgG	Berechnete Masse: 1012 aa, 115 kDa	
Immunogen Katalognummer: AG15686	Beobachtete Masse: 130 kDa	

Anwendungen

Geprüfte Anwendungen: IF, WB, ELISA	Positivkontrollen: WB: HeLa-Zellen, Jurkat-Zellen, Maushodengewebe IF: HeLa-Zellen,
In Publikationen genannte Anwendungen: WB	
Getestete Reaktivität: Human, Maus	
Zitierte Arten: Human	

Hintergrundinformationen

PHD finger protein 20 (PHF20), also known as NZF, TZIP, GLEA2 or HCA58, is a 1,012 amino acid protein that localizes to the nucleus and contains one PHD-type zinc finger, one C2H2-type zinc finger and one A/T hook DNA-binding domain. PHF20 contains a tudor domain, which facilitates binding to di-methylated histone H4 Lys20. PHF20 is expressed in a variety of tissues, including liver, heart, lung, pancreas, spleen, testis and placenta, PHF20 is thought to function as a transcription factor, possibly playing a role in the development of cancers, including glioblastoma, lung cancer, colon cancer and ovarian cancer. PHF20 exists as three alternatively spliced isoforms (150kd, 130kd and 120kd) which are encoded by a gene that maps to human chromosome 20 (22072714).

Bemerkenswerte Veröffentlichungen

Verfasser	Pubmed ID	Journal	Anwendung
Quan Jin	35039981	Biochem Genet	WB

Lagerung

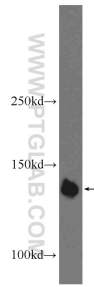
Lagerungsbedingungen:
Bei -20°C lagern. Nach dem Versand ein Jahr lang stabil
Lagerungspuffer:
PBS mit 0.02% Natriumazid und 50% Glycerin pH 7.3.
Aliquotieren ist nicht notwendig bei -20°C Lagerung

*** 20ul-Größen enthalten 0.1% BSA

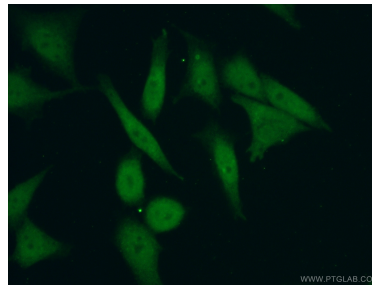
For technical support and original validation data for this product please contact:
T: 1 (888) 4PTGLAB (1-888-478-4522) (toll free in USA), or 1(312) 455-8498 (outside USA)
E: proteintech@ptglab.com
W: ptglab.com

This product is exclusively available under Proteintech Group brand and is not available to purchase from any other manufacturer.

Ausgewählte Validierungsdaten



HeLa cells were subjected to SDS PAGE followed by western blot with 22010-1-AP (PHF20 Antibody) at dilution of 1:1000 incubated at room temperature for 1.5 hours.



Immunofluorescent analysis of (10% Formaldehyde) fixed HeLa cells using 22010-1-AP (PHF20 antibody) at dilution of 1:50 and Alexa Fluor 488-conjugated AffiniPure Goat Anti-Rabbit IgG(H+L).