

Nur für Forschungszwecke

# RRBP1 Polyklonaler Antikörper

Katalog-Nr.: 22015-1-AP

Vorgestelltes Produkt

6 Publikationen



## Allgemeine Informationen

<b>Katalog-Nr.:</b> 22015-1-AP	<b>GenBank-Zugangsnummer:</b> BC128577	<b>Reinigungsmethode:</b> Antigen-Affinitätsreinigung
<b>Größe:</b> 150ul, Konzentration: 1000 µg/ml von 6238 Nanodrop und 673 µg/ml durch die Bradford-Methode mit BSA als Standard;	<b>GeneID (NCBI):</b> Vollständiger Name: ribosome binding protein 1 homolog 180kDa (dog)	<b>Empfohlene Verdünnungen:</b> WB 1:2000-1:12000 IHC 1:20-1:200 IF 1:20-1:200
<b>Wirt:</b> Kaninchen	<b>Berechnete Masse:</b> 1410 aa, 152 kDa	
<b>Isotyp:</b> IgG	<b>Beobachtete Masse:</b> 180 kDa	
<b>Immunogen Katalognummer:</b> AG16648		

## Anwendungen

<b>Geprüfte Anwendungen:</b> FC, IF, IHC, WB, ELISA	<b>Positivkontrollen:</b> WB: HeLa-Zellen, HepG2-Zellen, Maus-Pankreasgewebe IHC: humanes Lungenkarzinomgewebe, humanes Pankreasgewebe IF: NIH/3T3-Zellen,
<b>In Publikationen genannte Anwendungen:</b> IF, IHC, IP, WB	
<b>Getestete Reaktivität:</b> Human, Maus	
<b>Zitierte Arten:</b> Human	
<b>Hinweis-IHC: Antigenmaskierung mit TE-Puffer pH 9,0 empfohlen. (*) Wahlweise kann die Antigenmaskierung auch mit Citratpuffer pH 6,0 erfolgen.</b>	

## Hintergrundinformationen

Ribosome-binding protein 1 (RRBP1) is an endoplasmic reticulum membrane protein. It is a 1410 amino acid protein composed of a hydrophobic NH<sub>2</sub>-terminus that includes a transmembrane domain, a highly conserved tandem repeat (ribosome-binding domain), and an acidic coiled-coil COOH-terminal domain. RRBP1 acts as a ribosome receptor and mediates interaction between the ribosome and the endoplasmic reticulum membrane. It is also involved in early cardiac morphogenesis (PMID: 22709790; 8812507; 7686155). RRBP1 has two different isoforms with molecular weights of 150 kDa and 109 kDa.

## Bemerkenswerte Veröffentlichungen

Verfasser	Pubmed ID	Journal	Anwendung
Wenqing Wang	34618999	Mol Oncol	WB, IF, IP
Yuan Wang	32524001	Sci Adv	IF
Wonyul Jang	36520888	Science	WB

## Lagerung

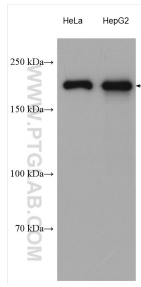
**Lagerungsbedingungen:**  
Bei -20°C lagern. Nach dem Versand ein Jahr lang stabil  
**Lagerungspuffer:**  
PBS mit 0.02% Natriumazid und 50% Glycerin pH 7.3.  
Aliquotieren ist nicht notwendig bei -20°C Lagerung

\*\*\* 20ul-Größen enthalten 0.1% BSA

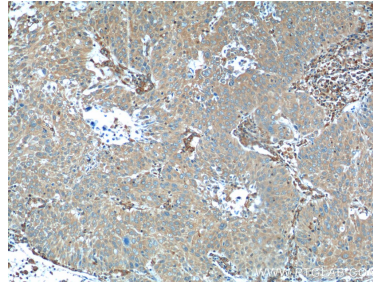
For technical support and original validation data for this product please contact:  
T: 1 (888) 4PTGLAB (1-888-478-4522) (toll free in USA), or 1(312) 455-8498 (outside USA)  
E: proteintech@ptglab.com  
W: ptglab.com

This product is exclusively available under Proteintech Group brand and is not available to purchase from any other manufacturer.

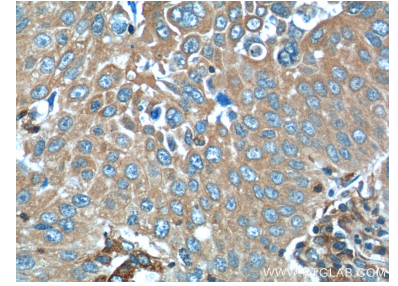
## Ausgewählte Validierungsdaten



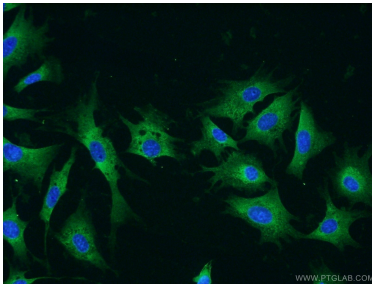
Various lysates were subjected to SDS PAGE followed by western blot with 22015-1-AP (RRBP1 antibody) at dilution of 1:6000 incubated at room temperature for 1.5 hours.



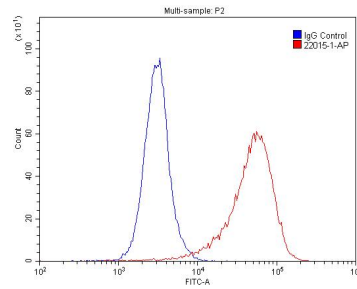
Immunohistochemical analysis of paraffin-embedded human lung cancer tissue slide using 22015-1-AP (RRBP1 Antibody) at dilution of 1:50 (under 10x lens).



Immunohistochemical analysis of paraffin-embedded human lung cancer tissue slide using 22015-1-AP (RRBP1 Antibody) at dilution of 1:50 (under 40x lens).



Immunofluorescent analysis of NIH/3T3 cells using 22015-1-AP (RRBP1 antibody) at dilution of 1:50 and Alexa Fluor 488-conjugated AffiniPure Goat Anti-Rabbit IgG(H+L).



1x10<sup>6</sup> BxPC-3 cells were stained with 0.2ug RRBP1 antibody (22015-1-AP, red) and control antibody (blue). Alexa Fluor 488-conjugated AffiniPure Goat Anti-Rabbit IgG(H+L) with dilution 1:1500. Cells were fixed with 4% PFA and permeabilized with 0.1% Triton X-100.