

Nur für Forschungszwecke

# NFATC2 Polyklonaler Antikörper

Katalog-Nr.: 22023-1-AP

Vorgestelltes Produkt

16 Publikationen



## Allgemeine Informationen

<b>Katalog-Nr.:</b> 22023-1-AP	<b>GenBank-Zugangsnummer:</b> BC136418	<b>Reinigungsmethode:</b> Antigen-Affinitätsreinigung
<b>Größe:</b> 150ul, Konzentration: 900 µg/ml von Nanodrop;	<b>GeneID (NCBI):</b> 4773	<b>Empfohlene Verdünnungen:</b> WB 1:2000-1:16000 IP 0.5-4.0 µg für IP und 1:500-1:2000 für WB
<b>Wirt:</b> Kaninchen	<b>Vollständiger Name:</b> nuclear factor of activated T-cells, cytoplasmic, calcineurin-dependent 2	<b>IHC 1:50-1:500</b> <b>IF 1:50-1:500</b>
<b>Isotyp:</b> IgG	<b>Berechnete Masse:</b> 925 aa, 100 kDa	
<b>Immunogen Katalognummer:</b> AG16849	<b>Beobachtete Masse:</b> 135 kDa	

## Anwendungen

**Geprüfte Anwendungen:**  
FC, IF, IHC, IP, WB, ELISA

**In Publikationen genannte Anwendungen:**  
IF, IHC, WB

**Getestete Reaktivität:**  
Human, Maus

**Zitierte Arten:**  
Human, Maus

**Hinweis-IHC: Antigenmaskierung mit TE-Puffer pH 9,0 empfohlen. (\*) Wahlweise kann die Antigenmaskierung auch mit Citratpuffer pH 6,0 erfolgen.**

**Positivkontrollen:**

**WB:** Jurkat-Zellen,

**IP:** Jurkat-Zellen,

**IHC:** humanes Mammakarzinomgewebe, humanes Kolonkarzinomgewebe, humanes Lymphomgewebe

**IF:** U-251-Zellen,

## Hintergrundinformationen

Nuclear factor of activated T-cells, cytoplasmic 2 (NFATC2), also named NFAT1, or NFATP, is a 925 amino acid protein, which is expressed in thymus, spleen, heart, testis, brain, placenta, muscle and pancreas. Cytoplasmic for the phosphorylated form and nuclear after activation that is controlled by calcineurin-mediated dephosphorylation. Rapid nuclear exit of NFATC is thought to be one mechanism by which cells distinguish between sustained and transient calcium signals. The subcellular localization of NFATC plays a key role in the regulation of gene transcription. NFATC2 plays a role in the inducible expression of cytokine genes in T-cells, especially in the induction of the IL-2, IL-3, IL-4, TNF-alpha or GM-CSF. NFATC2 promotes invasive migration through the activation of GPC6 expression and WNT5A signaling pathway. The calculated molecular weight of NFATC2 is about 97-100 kDa, but the modified NFATC2 protein is about 135 kDa.

## Bemerkenswerte Veröffentlichungen

Verfasser	Pubmed ID	Journal	Anwendung
Qian Wang	33015191	J Diabetes Res	IF
Yitian Lu	36071475	J Neuroinflammation	WB
Bing Xin	33125687	Reprod Sci	WB

## Lagerung

**Lagerungsbedingungen:**

Bei -20°C lagern. Nach dem Versand ein Jahr lang stabil

**Lagerungspuffer:**

PBS mit 0.02% Natriumazid und 50% Glycerin pH 7.3.

Aliquotieren ist nicht notwendig bei -20°C Lagerung

\*\*\* 20ul-Größen enthalten 0.1% BSA

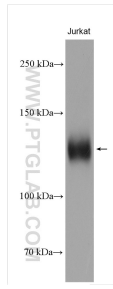
For technical support and original validation data for this product please contact:

T: 1 (888) 4PTGLAB (1-888-478-4522) (toll free in USA), or 1(312) 455-8498 (outside USA)

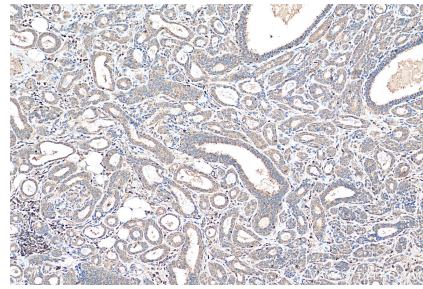
E: proteintech@ptglab.com  
W: ptglab.com

This product is exclusively available under Proteintech Group brand and is not available to purchase from any other manufacturer.

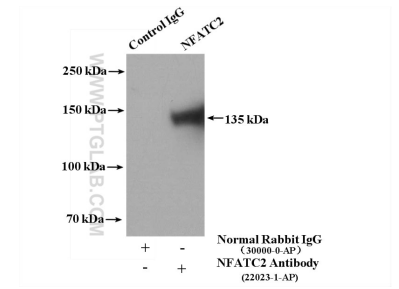
## Ausgewählte Validierungsdaten



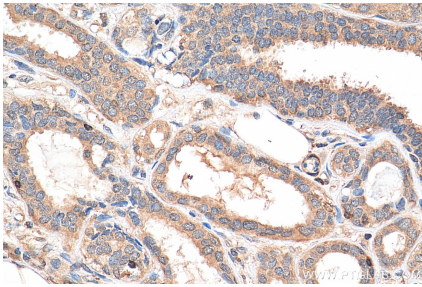
Jurkat cells were subjected to SDS PAGE followed by western blot with 22023-1-AP (NFATC2 antibody) at dilution of 1:8000 incubated at room temperature for 1.5 hours.



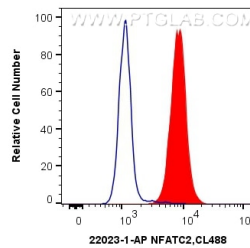
Immunohistochemical analysis of paraffin-embedded human breast cancer tissue slide using 22023-1-AP (NFATC2 antibody) at dilution of 1:200 (under 10x lens). Heat mediated antigen retrieval with Tris-EDTA buffer (pH 9.0).



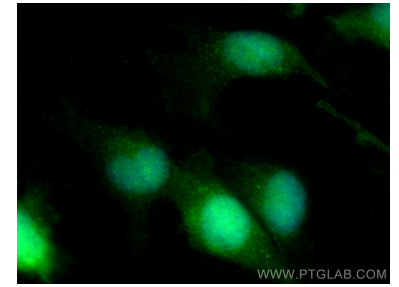
IP Result of anti-NFATC2 (IP:22023-1-AP, 4ug; Detection:22023-1-AP 1:1000) with Jurkat cells lysate 3200ug.



Immunohistochemical analysis of paraffin-embedded human breast cancer tissue slide using 22023-1-AP (NFATC2 antibody) at dilution of 1:200 (under 40x lens). Heat mediated antigen retrieval with Tris-EDTA buffer (pH 9.0).



1x10<sup>6</sup> Jurkat cells were intracellularly stained with 0.4 ug Anti-Human NFATC2 (22023-1-AP) and CoraLite®488-Conjugated AffiniPure Goat Anti-Rabbit IgG(H+L) at dilution 1:1000 (red), or 0.4 ug Control Antibody. Cells were fixed with 4% PFA and permeabilized with Flow Cytometry Perm Buffer (PF00011-C).



Immunofluorescent analysis of (4% PFA) fixed U-251 cells using NFATC2 antibody (22023-1-AP) at dilution of 1:200 and CoraLite®488-Conjugated AffiniPure Goat Anti-Rabbit IgG(H+L).