

Nur für Forschungszwecke

ARPC5L Polyklonaler Antikörper

Katalog-Nr.: 22025-1-AP

1 Publikationen



Allgemeine Informationen

Katalog-Nr.: 22025-1-AP	GenBank-Zugangsnummer: BC000798	Reinigungsmethode: Antigen-Affinitätsreinigung
Größe: 150ul, Konzentration: 600 µg/ml von Nanodrop;	GeneID (NCBI): 81873	Empfohlene Verdünnungen: WB 1:1000-1:4000 IP 0.5-4.0 µg für IP und 1:500-1:2000 für WB
Wirt: Kaninchen	Vollständiger Name: actin related protein 2/3 complex, subunit 5-like	IHC 1:20-1:200 IF 1:10-1:100
Isotyp: IgG	Berechnete Masse: 17 kDa	
Immunogen Katalognummer: AG16881	Beobachtete Masse: 17-20 kDa	

Anwendungen

Geprüfte Anwendungen: FC, IF, IHC, IP, WB, ELISA	Positivkontrollen:
In Publikationen genannte Anwendungen: IF, WB	WB: Maushirngewebe, humanes Hirngewebe, Mauslungengewebe, NIH/3T3-Zellen, Rattenhirngewebe
Getestete Reaktivität: Human, Maus, Ratte	IP: Maushirngewebe,
Zitierte Arten: Human	IHC: humanes Plazenta-Gewebe, humanes Cerebellum-Gewebe
Hinweis-IHC: Antigenmaskierung mit TE-Puffer pH 9,0 empfohlen. (*) Wahlweise kann die Antigenmaskierung auch mit Citratpuffer pH 6,0 erfolgen.	IF: MCF-7-Zellen,

Hintergrundinformationen

ARPC5L, also known as ARC16-2, belongs to the ARPC5 family. ARPC5L is involved in Arp2/3 complex-mediated actin nucleation and together with an activating nucleation-promoting factor (NPF) mediates the formation of branched actin networks. ARPC5L-containing Arp2/3 complexes are required for the peripheral positioning of nuclei in myofibers (PMID: 28892082). The molecular mass of ARPC5L is 17-20 kDa.

Bemerkenswerte Veröffentlichungen

Verfasser	Pubmed ID	Journal	Anwendung
Jason W. Lui	34468072	Pigment Cell Melanoma Res	WB,IF

Lagerung

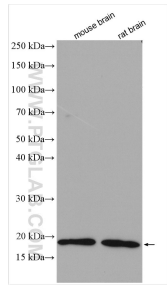
Lagerungsbedingungen:
Bei -20°C lagern. Nach dem Versand ein Jahr lang stabil
Lagerungspuffer:
PBS mit 0.02% Natriumazid und 50% Glycerin pH 7.3.
Aliquotieren ist nicht notwendig bei -20°C Lagerung

*** 20ul-Größen enthalten 0.1% BSA

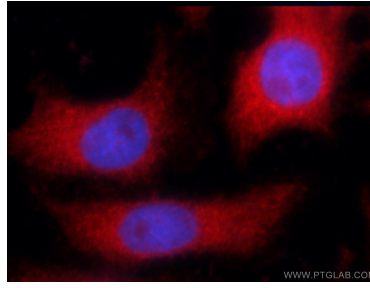
For technical support and original validation data for this product please contact:
T: 1 (888) 4PTGLAB (1-888-478-4522) (toll free in USA), or 1(312) 455-8498 (outside USA)
E: proteintech@ptglab.com
W: ptglab.com

This product is exclusively available under Proteintech Group brand and is not available to purchase from any other manufacturer.

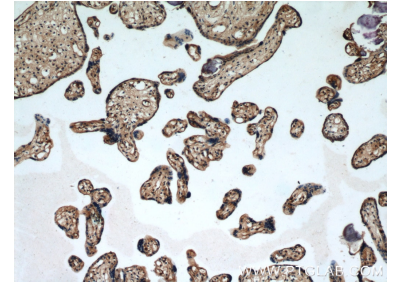
Ausgewählte Validierungsdaten



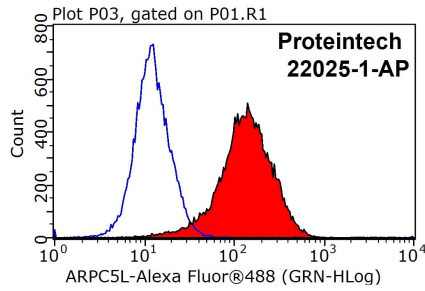
Various lysates were subjected to SDS PAGE followed by western blot with 22025-1-AP (ARPC5L antibody) at dilution of 1:2000 incubated at room temperature for 1.5 hours.



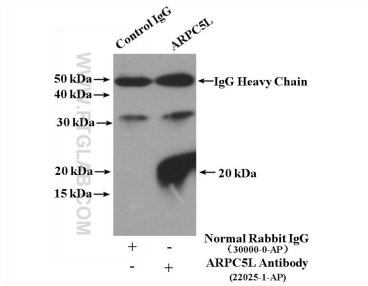
Immunofluorescent analysis of MCF-7 cells using 22025-1-AP (ARPC5L antibody) at dilution of 1:25 and Rhodamine-Goat anti-Rabbit IgG.



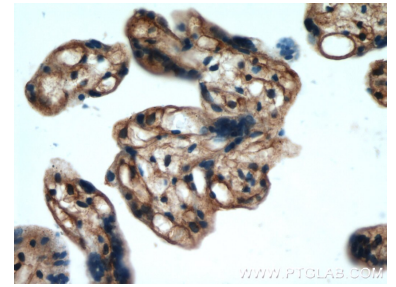
Immunohistochemical analysis of paraffin-embedded human placenta using 22025-1-AP (ARPC5L antibody) at dilution of 1:50 (under 10x lens).



1X10⁶ MCF-7 cells were stained with 0.2ug ARPC5L antibody (22025-1-AP, red) and control antibody (blue). Fixed with 90% MeOH blocked with 3% BSA (30 min). Alexa Fluor 488-conjugated AffiniPure Goat Anti-Rabbit IgG(H+L) with dilution 1:1000.



IP Result of anti-ARPC5L (IP:22025-1-AP, 4ug; Detection:22025-1-AP 1:1000) with mouse brain tissue lysate 4000ug.



Immunohistochemical analysis of paraffin-embedded human placenta using 22025-1-AP (ARPC5L antibody) at dilution of 1:50 (under 40x lens).