

Nur für Forschungszwecke

# SARA Polyklonaler Antikörper

Katalog-Nr.: 22033-1-AP

Vorgestelltes Produkt

2 Publikationen



## Allgemeine Informationen

<b>Katalog-Nr.:</b> 22033-1-AP	<b>GenBank-Zugangsnummer:</b> BC032680	<b>Reinigungsmethode:</b> Antigen-Affinitätsreinigung
<b>Größe:</b> 150ul, Konzentration: 450 µg/ml von Nanodrop;	<b>GeneID (NCBI):</b> 9372	<b>Empfohlene Verdünnungen:</b> WB 1:500-1:2000 IP 0.5-4.0 µg für IP und 1:500-1:2000 für WB
<b>Wirt:</b> Kaninchen	<b>Vollständiger Name:</b> zinc finger, FYVE domain containing 9	<b>IHC 1:20-1:200</b> <b>IF 1:50-1:500</b>
<b>Isotyp:</b> IgG	<b>Berechnete Masse:</b> 1425 aa, 156 kDa	
<b>Immunogen Katalognummer:</b> AG16929	<b>Beobachtete Masse:</b> 156 kDa	

## Anwendungen

### Geprüfte Anwendungen:

IF, IHC, IP, WB, ELISA

### In Publikationen genannte Anwendungen:

IF, WB

### Getestete Reaktivität:

Human, Maus, Ratte

### Zitierte Arten:

Human, Maus

**Hinweis-IHC: Antigenmaskierung mit TE-Puffer pH 9,0 empfohlen. (\*) Wahlweise kann die Antigenmaskierung auch mit Citratpuffer pH 6,0 erfolgen.**

### Positivkontrollen:

**WB:** HEK-293-Zellen, HeLa-Zellen, humanes Hirngewebe, Maushirngewebe, MCF-7-Zellen

**IP:** Maushirngewebe,

**IHC:** humanes Nierengewebe,

**IF:** Maushirngewebe, Mausnierengewebe

## Hintergrundinformationen

ZFYVE9, also known as SARA (Smad anchor for receptor activation), is a double zinc finger (FYVE domain) protein that interacts directly with SMAD2 and SMAD3, and is involved in Alzheimer's disease. SARA functions to recruit SMAD2/SMAD3 to intracellular membranes and to the TGF-beta receptor. SARA plays a significant role in TGF-mediated signaling by regulating the subcellular location of SMAD2 and SMAD3 and modulating the transcriptional activity of the SMAD3/SMAD4 complex. SARA is possibly associated with TGF-beta receptor internalization.

## Bemerkenswerte Veröffentlichungen

Verfasser	Pubmed ID	Journal	Anwendung
Changgui Shi	36321807	J Bone Miner Res	WB,IF
Deepankar Gahloth	28602823	Structure	WB

## Lagerung

### Lagerungsbedingungen:

Bei -20°C lagern. Nach dem Versand ein Jahr lang stabil

### Lagerungspuffer:

PBS mit 0.02% Natriumazid und 50% Glycerin pH 7.3.

Aliquotieren ist nicht notwendig bei -20°C Lagerung

\*\*\* 20ul-Größen enthalten 0.1% BSA

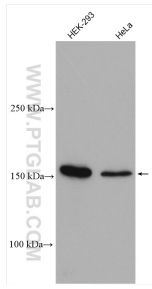
For technical support and original validation data for this product please contact:

T: 1 (888) 4PTGLAB (1-888-478-4522) (toll free in USA), or 1(312) 455-8498 (outside USA)

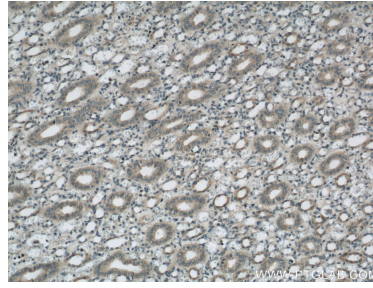
E: proteintech@ptglab.com  
W: ptglab.com

This product is exclusively available under Proteintech Group brand and is not available to purchase from any other manufacturer.

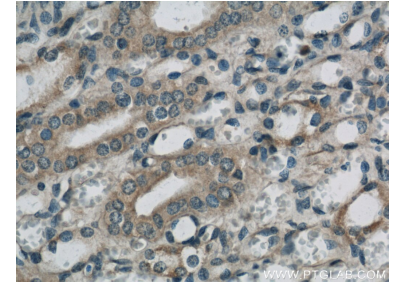
## Ausgewählte Validierungsdaten



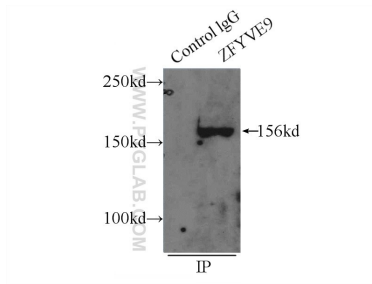
Various lysates were subjected to SDS PAGE followed by western blot with 22033-1-AP (SARA antibody) at dilution of 1:1000 incubated at room temperature for 1.5 hours.



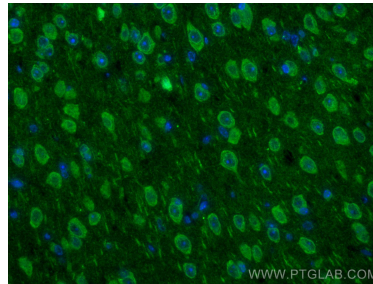
Immunohistochemical analysis of paraffin-embedded human kidney using 22033-1-AP (SARA antibody) at dilution of 1:50 (under 10x lens).



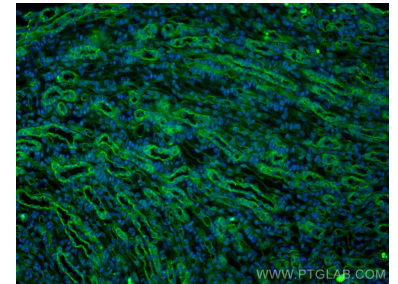
Immunohistochemical analysis of paraffin-embedded human kidney using 22033-1-AP (SARA antibody) at dilution of 1:50 (under 40x lens).



IP Result of anti-SARA (IP:22033-1-AP, 5ug; Detection:22033-1-AP 1:1000) with mouse brain tissue lysate 5000ug.



Immunofluorescent analysis of (4% PFA) fixed mouse brain tissue using SARA antibody (22033-1-AP) at dilution of 1:200 and CoraLite®488-Conjugated AffiniPure Goat Anti-Rabbit IgG(H+L).



Immunofluorescent analysis of (4% PFA) fixed mouse kidney tissue using SARA antibody (22033-1-AP) at dilution of 1:200 and CoraLite®488-Conjugated AffiniPure Goat Anti-Rabbit IgG(H+L).