

## Allgemeine Informationen

<b>Katalog-Nr.:</b> 22034-1-AP	<b>GenBank-Zugangsnummer:</b> BC005821	<b>Reinigungsmethode:</b> Antigen-Affinitätsreinigung
<b>Größe:</b> 150ul , Konzentration: 600 µg/ml von Nanodrop;	<b>GeneID (NCBI):</b> 5728	<b>Empfohlene Verdünnungen:</b> WB 1:2000-1:10000 IP 0.5-4.0 ug für IP und 1:500-1:1000 für WB IHC 1:500-1:2000
<b>Wirt:</b> Kaninchen	<b>Vollständiger Name:</b> phosphatase and tensin homolog	
<b>Isotyp:</b> IgG	<b>Berechnete Masse:</b> 47 kDa	
<b>Immunogen Katalognummer:</b> AG17274	<b>Beobachtete Masse:</b> 55 kDa, 68 kDa	

## Anwendungen

### Geprüfte Anwendungen:

FC, IHC, IP, WB, ELISA

### In Publikationen genannte Anwendungen:

CoIP, IF, IHC, IP, WB

### Getestete Reaktivität:

Human, Maus

### Zitierte Arten:

Human, Maus, Ratte, Rind

**Hinweis-IHC: Antigenmaskierung mit TE-Puffer pH 9,0 empfohlen. (\*) Wahlweise kann die Antigenmaskierung auch mit Citratpuffer pH 6,0 erfolgen.**

### Positivkontrollen:

**WB:** DU 145-Zellen, C6-Zellen, HEK-293T-Zellen, HeLa-Zellen, Jurkat-Zellen, LNCaP-Zellen, Maushodengewebe, Maus-Thymusgewebe, MCF-7-Zellen, NIH/3T3-Zellen, Rattenhodengewebe

**IP:** DU 145-Zellen,

**IHC:** humanes Mammakarzinomgewebe, humanes Hodengewebe, humanes Kolonkarzinomgewebe, humanes Prostatakarzinomgewebe, Maushirngewebe

## Hintergrundinformationen

PTEN(Phosphatase and tensin homolog) is also named as MMAC1, TEP1 and it modulates cell cycle progression and cell survival (blockage) through down-regulating the positive cell cycle-regulator (cycle D1) by its phosphatase activity and up-regulating the negative cell cycle regulator p21 (by its lipid phosphatase activity). PTEN is an important tumor suppressor whose inactivation frequency in cancers is ranked second after p53 tumor suppressor inactivation. PTEN is a 403-residue protein structured in an amino (N)-terminal phosphatase domain and a carboxy (C)-terminal C2 domain that binds phospholipid membranes.(PMID:14749127). There are some report showing that SUMOylation appears to be a positive regulator in controlling PTEN membrane association, whereas phosphorylation is a negative regulator that may neutralize SUMOylation through intramolecular electrostatic interactions (PMID:22713753). This antibody can recognize two isoforms with MW of 55kDa and 68 kDa.

## Bemerkenswerte Veröffentlichungen

Verfasser	Pubmed ID	Journal	Anwendung
Jing Zhao	32986180	Biotechnol Lett	WB
XIAOYUE FENG	34528694	Oncol Rep	WB,IHC
Shuchao Wang	30240910	Ann Anat	WB

## Lagerung

### Lagerungsbedingungen:

Bei -20°C lagern. Nach dem Versand ein Jahr lang stabil

### Lagerungspuffer:

PBS mit 0.02% Natriumazid und 50% Glycerin pH 7.3.

Aliquotieren ist nicht notwendig bei -20°C Lagerung

**\*\*\* 20ul-Größen enthalten 0.1% BSA**

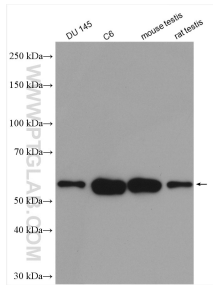
For technical support and original validation data for this product please contact:

T: 1 (888) 4PTGLAB (1-888-478-4522) (toll free in USA), or 1(312) 455-8498 (outside USA)

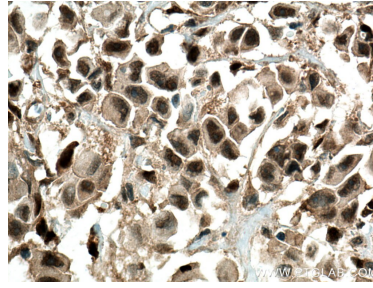
E: [proteintech@ptglab.com](mailto:proteintech@ptglab.com)  
W: [ptglab.com](http://ptglab.com)

**This product is exclusively available under Proteintech Group brand and is not available to purchase from any other manufacturer.**

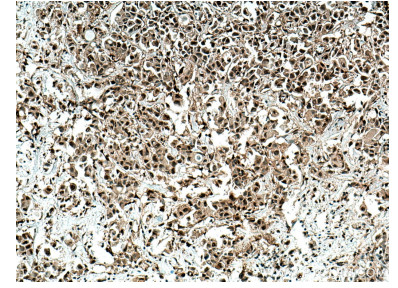
## Ausgewählte Validierungsdaten



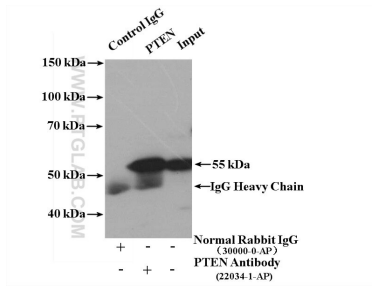
Various lysates were subjected to SDS PAGE followed by western blot with 22034-1-AP (PTEN antibody) at dilution of 1:5000 incubated at room temperature for 1.5 hours.



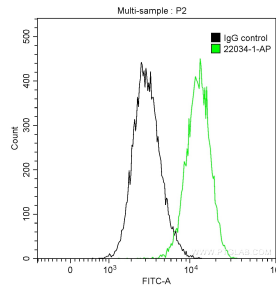
Immunohistochemical analysis of paraffin-embedded human breast cancer tissue slide using 22034-1-AP (PTEN antibody) at dilution of 1:1000 (under 40x lens). Heat mediated antigen retrieval with Tris-EDTA buffer (pH 9.0).



Immunohistochemical analysis of paraffin-embedded human breast cancer tissue slide using 22034-1-AP (PTEN antibody) at dilution of 1:1000 (under 10x lens). Heat mediated antigen retrieval with Tris-EDTA buffer (pH 9.0).



IP result of anti-PTEN (IP:22034-1-AP, 4ug; Detection:22034-1-AP 1:500) with DU 145 cells lysate 1800 ug.



1x10<sup>6</sup> HeLa cells were intracellularly stained with 0.2 ug Anti-Human PTEN (22034-1-AP) and CoraLite®488-Conjugated AffiniPure Goat Anti-Rabbit IgG(H+L) at dilution 1:1000 (green), and 0.2 ug Control Antibody. Cells were fixed with 90% MeOH.