

Nur für Forschungszwecke

MAGED1 Polyklonaler Antikörper

Katalog-Nr.:22053-1-AP

Vorgestelltes Produkt

4 Publikationen



Allgemeine Informationen

Katalog-Nr.:

22053-1-AP

Größe:

150ul , Konzentration: 340 µg/ml durch die Bradford-Methode mit BSA als Standard;

Wirt:

Kaninchen

Isotyp:

IgG

Immunogen Katalognummer:

AG17047

GenBank-Zugangsnummer:

BC014070

GeneID (NCBI):

9500

Vollständiger Name:

melanoma antigen family D, 1

Berechnete Masse:

834 aa, 92 kDa

Beobachtete Masse:

95-100 kDa

Reinigungsmethode:

Antigen-Affinitätsreinigung

Empfohlene Verdünnungen:

WB 1:500-1:2000

IP 0.5-4.0 ug für IP und 1:500-1:2000

für WB

IHC 1:20-1:200

IF 1:20-1:200

Anwendungen

Geprüfte Anwendungen:

FC, IF, IHC, IP, WB, ELISA

In Publikationen genannte Anwendungen:

IF, IHC, WB

Getestete Reaktivität:

Human, Maus, Ratte

Zitierte Arten:

Human, Maus

Hinweis-IHC: Antigenmaskierung mit TE-Puffer pH 9,0 empfohlen. (*) Wahlweise kann die Antigenmaskierung auch mit Citratpuffer pH 6,0 erfolgen.

Positivkontrollen:

WB : A549-Zellen, HEK-293-Zellen, Maus-Plazenta-Gewebe

IP : A549-Zellen,

IHC : humanes Plazenta-Gewebe, humanes Hautgewebe

IF : A549-Zellen,

Hintergrundinformationen

MAGED1 (also known as NRAGE or Dlxin-1) is a member of the type II melanoma antigen (MAGE) family of protein. MAGED1 can interact with the nerve growth factor receptor p75NTR, antagonize the association of p75NTR with TrkA, inhibit cell cycle progression, and facilitate p75NTR-mediated apoptosis (PMID: 10985348). It has been reported that MAGED1 binds Dlx5 and regulates its transcriptional function. In vivo, MAGED1 binds not only Dlx5 but also Dlx7 and Msx2 and forms homomultimers (PMID: 11084035). MAGED1 knockout mice show depressive behavior and impairments of circadian rhythm (PMID: 20300063; 23314527). Three transcript variants encoding two different isoforms (86kDa and 92 kDa) have been found for the gene of MAGED1.

Bemerkenswerte Veröffentlichungen

Verfasser	Pubmed ID	Journal	Anwendung
Xiaodi Jiang	29778424	Gene	WB,IHC
Huandi Zhou	26738870	Tumour Biol	WB,IHC,IF
Qiang Lu	31891772	Biochim Biophys Acta Mol Cell Biol Lipids	WB

Lagerung

Lagerungsbedingungen:

Bei -20°C lagern. Nach dem Versand ein Jahr lang stabil

Lagerungspuffer:

PBS mit 0.02% Natriumazid und 50% Glycerin pH 7.3.

Aliquotieren ist nicht notwendig bei -20°C Lagerung

*** 20ul-Größen enthalten 0.1% BSA

For technical support and original validation data for this product please contact:

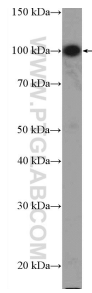
T: 1 (888) 4PTGLAB (1-888-478-4522) (toll free in USA), or 1(312) 455-8498 (outside USA)

E: proteintech@ptglab.com

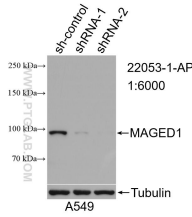
W: ptglab.com

This product is exclusively available under Proteintech Group brand and is not available to purchase from any other manufacturer.

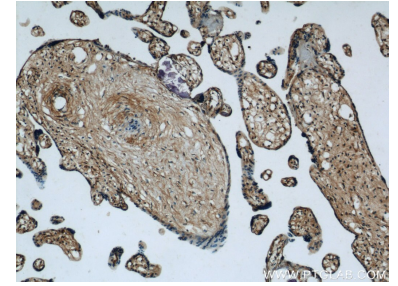
Ausgewählte Validierungsdaten



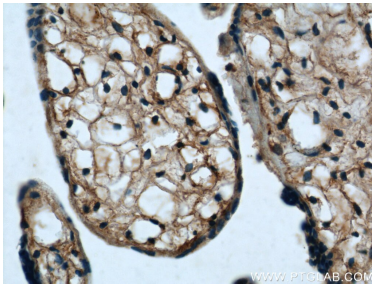
A549 cells were subjected to SDS PAGE followed by western blot with 22053-1-AP (MAGED1 Antibody) at dilution of 1:1000 incubated at room temperature for 1.5 hours.



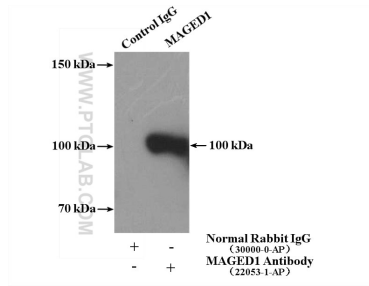
WB result of MAGED1 antibody (22053-1-AP; 1:6000; incubated at room temperature for 1.5 hours) with sh-Control and sh-MAGED1 transfected A549 cells.



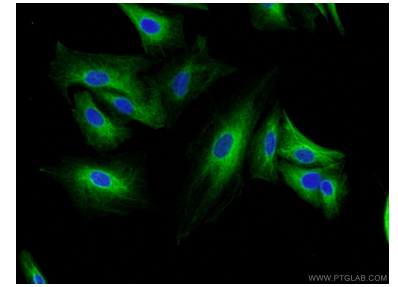
Immunohistochemical analysis of paraffin-embedded human placenta using 22053-1-AP (MAGED1 antibody) at dilution of 1:50 (under 10x lens).



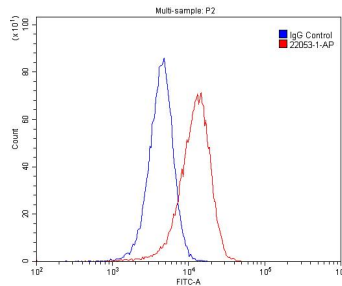
Immunohistochemical analysis of paraffin-embedded human placenta using 22053-1-AP (MAGED1 antibody) at dilution of 1:50 (under 40x lens).



IP Result of anti-MAGED1 (IP:22053-1-AP, 4ug; Detection:22053-1-AP 1:1000) with A549 cells lysate 400ug.



Immunofluorescent analysis of A549 cells using 22053-1-AP (MAGED1 antibody) at dilution of 1:50 and Alexa Fluor 488-conjugated AffiniPure Goat Anti-Rabbit IgG(H+L).



1x10⁶ HeLa cells were stained with .2ug MAGED1 antibody (22053-1-AP, red) and control antibody (blue). Cells were fixed with 4% PFA and permeabilized with 0.1% Triton X-100. Alexa Fluor 488-conjugated AffiniPure Goat Anti-Rabbit IgG(H+L) with dilution 1:1500.