

Nur für Forschungszwecke

CDK2 Polyklonaler Antikörper

Katalog-Nr.: 22060-1-AP

Vorgestelltes Produkt

3 Publikationen



Allgemeine Informationen

Katalog-Nr.:
22060-1-AP

Größe:
150ul, Konzentration: 700 µg/ml von
Nanodrop und 373 µg/ml durch die
Bradford-Methode mit BSA als
Standard;

Wirt:
Kaninchen

Isotyp:
IgG

Immunogen Katalognummer:
AG17133

GenBank-Zugangsnummer:
BC003065

GeneID (NCBI):
1017

Vollständiger Name:
cyclin-dependent kinase 2

Berechnete Masse:
298 aa, 34 kDa

Beobachtete Masse:
30 kDa

Reinigungsmethode:

Antigen-Affinitätsreinigung

Empfohlene Verdünnungen:

WB 1:1000-1:4000
IP 0.5-4.0 µg für IP und 1:200-1:1000
für WB
IHC 1:200-1:800
IF 1:200-1:800

Anwendungen

Geprüfte Anwendungen:

FC (Intra), IF, IHC, IP, WB, ELISA

In Publikationen genannte Anwendungen:

IF, WB

Getestete Reaktivität:

Human

Zitierte Arten:

Human, Maus

Hinweis-IHC: Antigendemaskierung mit TE-Puffer pH 9,0 empfohlen. (*) Wahlweise kann die Antigendemaskierung auch mit Citratpuffer pH 6,0 erfolgen.

Positivkontrollen:

WB: HL-60-Zellen, HeLa-Zellen, K-562-Zellen

IP: K-562-Zellen,

IHC: humanes Zervixkarzinomgewebe,

IF: HeLa-Zellen,

Hintergrundinformationen

CDK2 (Cyclin-dependent kinase 2) is also named as CDKN2 and belongs to the protein kinase superfamily. It is dispensable for myelination but is important for adult oligodendrocyte progenitor cell renewal, and could be one of the underlying mechanisms that drive adult progenitors to differentiate and thus regenerate myelin (PMID:21502361). G2 phase CCNA1/CDK2 controls the timing of entry into mitosis by controlling the subsequent activation of CCNB/CDK1, but also has an unexpected role in coordinating the activation of CCNB/CDK1 at the centrosome and in the nucleus (PMID:18372919). It has 2 isoforms produced by alternative splicing with the molecular weight of 34 kDa and 30 kDa.

Bemerkenswerte Veröffentlichungen

Verfasser	Pubmed ID	Journal	Anwendung
Jinhang Hu	33811836	Eur J Pharmacol	IF
Chen Su	36031658	Biomark Res	WB, IF
Andrew Kodani	26297806	Elife	IF

Lagerung

Lagerungsbedingungen:

Bei -20°C lagern. Nach dem Versand ein Jahr lang stabil

Lagerungspuffer:

PBS mit 0.02% Natriumazid und 50% Glycerin pH 7.3.

Aliquotieren ist nicht notwendig bei -20°C Lagerung

*** 20ul-Größen enthalten 0.1% BSA

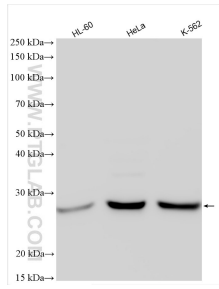
For technical support and original validation data for this product please contact:

T: 1 (888) 4PTGLAB (1-888-478-4522) (toll free in USA), or 1(312) 455-8498 (outside USA)

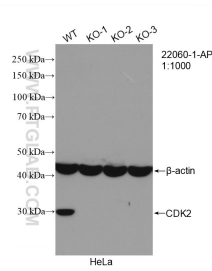
E: proteintech@ptglab.com
W: ptglab.com

This product is exclusively available under Proteintech Group brand and is not available to purchase from any other manufacturer.

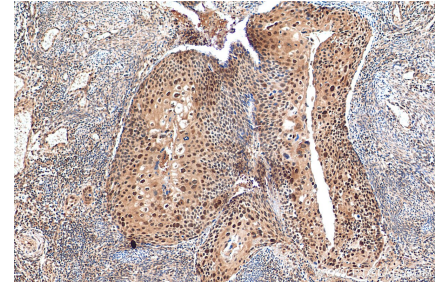
Ausgewählte Validierungsdaten



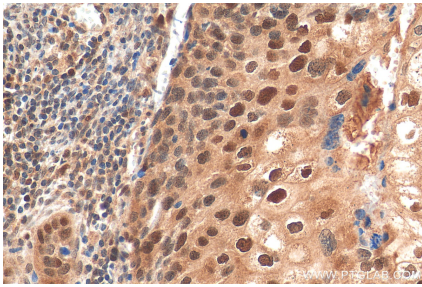
Various lysates were subjected to SDS PAGE followed by western blot with 22060-1-AP (CDK2 antibody) at dilution of 1:2000 incubated at room temperature for 1.5 hours.



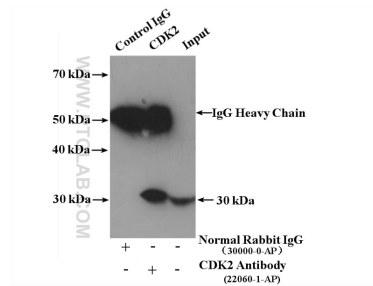
WB result of CDK2 antibody (22060-1-AP; 1:600; room temperature for 1.5 hours) with wild-type and CDK2 knockout HeLa cells.



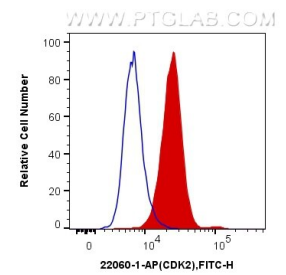
Immunohistochemical analysis of paraffin-embedded human cervical cancer tissue slide using 22060-1-AP (CDK2 antibody) at dilution of 1:400 (under 10x lens). Heat mediated antigen retrieval with Tris-EDTA buffer (pH 9.0).



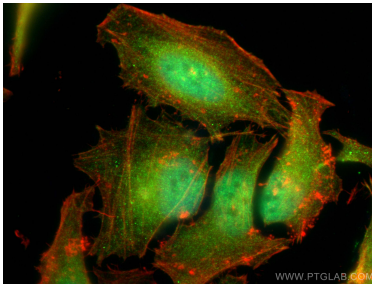
Immunohistochemical analysis of paraffin-embedded human cervical cancer tissue slide using 22060-1-AP (CDK2 antibody) at dilution of 1:400 (under 40x lens). Heat mediated antigen retrieval with Tris-EDTA buffer (pH 9.0).



IP Result of anti-CDK2 (IP:22060-1-AP, 4ug; Detection:22060-1-AP 1:300) with K-562 cells lysate 4000ug.



1X10⁶ HeLa cells were intracellularly stained with 0.4 ug Anti-Human CDK2 (22060-1-AP) and CoraLite@488-Conjugated AffiniPure Goat Anti-Rabbit IgG(H+L) at dilution 1:1000 (red), or 0.4 ug x. Cells were fixed with 4% PFA and permeabilized with Flow Cytometry Perm Buffer (PF00011-C).



Immunofluorescent analysis of (4% PFA) fixed HeLa cells using CDK2 antibody (22060-1-AP) at dilution of 1:400 and CoraLite@488-Conjugated AffiniPure Goat Anti-Rabbit IgG(H+L), CL594-Phalloidin (red).