

Nur für Forschungszwecke

PDE6B Polyklonaler Antikörper

Katalog-Nr.: 22063-1-AP

7 Publikationen



Allgemeine Informationen

Katalog-Nr.:
22063-1-AP

Größe:
150ul, Konzentration: 750 µg/ml von Nanodrop und 420 µg/ml durch die Bradford-Methode mit BSA als Standard;

Wirt:
Kaninchen

Isotyp:
IgG

Immunogen Katalognummer:
AG17139

GenBank-Zugangsnummer:
BC000249

GeneID (NCBI):
5158

Vollständiger Name:
phosphodiesterase 6B, cGMP-specific, rod, beta

Berechnete Masse:
854 aa, 98 kDa

Beobachtete Masse:
98 kDa

Reinigungsmethode:

Antigen-Affinitätsreinigung

Empfohlene Verdünnungen:

WB 1:500-1:2000
IP 0.5-4.0 µg für IP und 1:500-1:2000 für WB
IF 1:50-1:500

Anwendungen

Geprüfte Anwendungen:

IF, IP, WB, ELISA

In Publikationen genannte Anwendungen:

IF, IHC, WB

Getestete Reaktivität:

Human, Maus, Ratte

Zitierte Arten:

Human, Maus, Zebrafisch

Positivkontrollen:

WB: Maus-Augengewebe, A549-Zellen, Ratten-Augengewebe

IP: Y79-Zellen,

IF: Maus-Augengewebe,

Hintergrundinformationen

PDE6 is a cGMP-specific PDE family and presents multicomponent enzyme complexes. The rod PDE6 enzyme is comprised of two catalytic subunits (PDE6A and PDE6B) and it is expressed in human lungs (PMID:20979602). PDE6B(Rod cGMP-specific 3',5'-cyclic phosphodiesterase subunit beta) is also named as PDEB and belongs to the cyclic nucleotide phosphodiesterase family. PDE6B also has a C-terminal CAAX motif for posttranslational processing involving lipidation, proteolysis, and carboxymethylation (PMID:8394243). Defects in PDE6B are the cause of retinitis pigmentosa type 40 (RP40)(PMID:22334370) and congenital stationary night blindness autosomal dominant type 2 (CSNBAD2) (PMID:8075643).

Bemerkenswerte Veröffentlichungen

Verfasser	Pubmed ID	Journal	Anwendung
Carla Sanjurjo-Soriano	36114559	Stem Cell Res Ther	WB
Poppy Datta	31694913	J Biol Chem	WB,IF
Poppy Datta	33961633	PLoS One	WB, IHC

Lagerung

Lagerungsbedingungen:

Bei -20°C lagern. Nach dem Versand ein Jahr lang stabil

Lagerungspuffer:

PBS mit 0.02% Natriumazid und 50% Glycerin pH 7.3.

Aliquotieren ist nicht notwendig bei -20°C Lagerung

*** 20ul-Größen enthalten 0.1% BSA

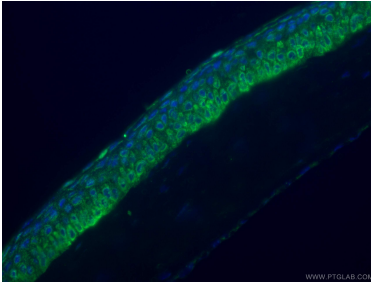
For technical support and original validation data for this product please contact:

T: 1 (888) 4PTGLAB (1-888-478-4522) (toll free in USA), or 1(312) 455-8498 (outside USA)

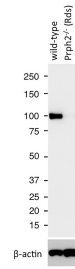
E: proteintech@ptglab.com
W: ptglab.com

This product is exclusively available under Proteintech Group brand and is not available to purchase from any other manufacturer.

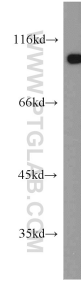
Ausgewählte Validierungsdaten



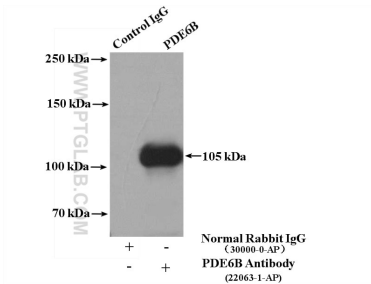
Immunofluorescent analysis of (4% PFA) fixed mouse eye tissue using PDE6B antibody (22063-1-AP) at dilution of 1:100 and CoraLite®488-Conjugated AffiniPure Goat Anti-Rabbit IgG(H+L).



WB results of PDE6B antibody (22063-1-AP) with WT mouse Eye and Prph2 (Rds) mutant mouse Eye (Negative control). Courtesy of Seongjin Seo, PhD, University of Iowa College of Medicine.



mouse eye tissue were subjected to SDS PAGE followed by western blot with 22063-1-AP (PDE6B antibody) at dilution of 1:1000 incubated at room temperature for 1.5 hours.



IP Result of anti-PDE6B (IP:22063-1-AP, 4ug; Detection:22063-1-AP 1:1000) with Y79 cells lysate 2000ug.