

Nur für Forschungszwecke

RBM22 Polyklonaler Antikörper

Katalog-Nr.: 22103-1-AP



Allgemeine Informationen

Katalog-Nr.:
22103-1-AP

Größe:

150ul, Konzentration: 1000 µg/ml von 55696

Nanodrop und 647 µg/ml durch die Bradford-Methode mit BSA als Standard;

Wirt:

Kaninchen

Isotyp:

IgG

Immunogen Katalognummer:

AG17315

GenBank-Zugangsnummer:

BC003402

GeneID (NCBI):

Vollständiger Name:
RNA binding motif protein 22

Berechnete Masse:

420 aa, 47 kDa

Beobachtete Masse:

47-50 kDa

Reinigungsmethode:

Antigen-Affinitätsreinigung

Empfohlene Verdünnungen:

WB 1:500-1:2000

Anwendungen

Geprüfte Anwendungen:

WB, ELISA

Getestete Reaktivität:

Human, Maus, Ratte

Positivkontrollen:

WB: Raji-Zellen, NIH/3T3-Zellen

Hintergrundinformationen

RBM22 is mainly involved in pre-mRNA splicing, playing the essential role of maintaining the conformation of the catalytic core of the spliceosome and acting as a bridge between the catalytic core and other essential protein components of the spliceosome. RBM22 is also involved in gene regulation, and is able to bind DNA, acting as a bona fide transcription factor on a large number of target genes. Due to its wide scope in the regulation of gene expression, RBM22 has been associated with several pathologies and, notably, with the aggressiveness of cancer cells and with the phenotype of a myelodysplastic syndrome. (PMID: 35158909)

Lagerung

Lagerungsbedingungen:

Bei -20°C lagern. Nach dem Versand ein Jahr lang stabil

Lagerungspuffer:

PBS mit 0.02% Natriumazid und 50% Glycerin pH 7.3.

Aliquotieren ist nicht notwendig bei -20°C Lagerung

***** 20ul-Größen enthalten 0.1% BSA**

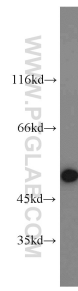
For technical support and original validation data for this product please contact:

T: 1 (888) 4PTGLAB (1-888-478-4522) (toll free in USA), or 1(312) 455-8498 (outside USA)

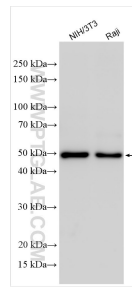
E: proteintech@ptglab.com
W: ptglab.com

This product is exclusively available under Proteintech Group brand and is not available to purchase from any other manufacturer.

Ausgewählte Validierungsdaten



Raji cells were subjected to SDS PAGE followed by western blot with 22103-1-AP (RBM22 antibody) at dilution of 1:1000 incubated at room temperature for 1.5 hours.



Various lysates were subjected to SDS PAGE followed by western blot with 22103-1-AP (RBM22 antibody) at dilution of 1:5000 incubated at room temperature for 1.5 hours.