

Nur für Forschungszwecke

ALDH1A1-specific Polyklonaler Antikörper



Katalog-Nr.: 22109-1-AP

Vorgestelltes Produkt

6 Publikationen

Allgemeine Informationen

| | | |
|--|--|---|
| Katalog-Nr.: 22109-1-AP | GenBank-Zugangsnummer: BC001505 | Reinigungsmethode: Antigen-Affinitätsreinigung |
| Größe: 150ul, Konzentration: 500 µg/ml von 216 Nanodrop und 313 µg/ml durch die Bradford-Methode mit BSA als Standard; | GeneID (NCBI): 216 | Empfohlene Verdünnungen: WB 1:500-1:2000 IHC 1:20-1:200 IF 1:50-1:500 |
| Wirt: Kaninchen | Vollständiger Name: aldehyde dehydrogenase 1 family, member A1 | |
| Isotyp: IgG | Berechnete Masse: 501 aa, 55 kDa | |
| Immunogen Katalognummer: AG17358 | Beobachtete Masse: 55 kDa | |

Anwendungen

| | |
|---|---|
| Geprüfte Anwendungen: FC, IF, IHC, WB, ELISA | Positivkontrollen: WB : humanes Lebergewebe, humanes Nebennierengewebe, K-562-Zellen, Maustiergewebe IHC : humanes Lebergewebe, humanes Leberzirrhosegewebe IF : A549-Zellen, |
| In Publikationen genannte Anwendungen: IP, WB | |
| Getestete Reaktivität: Human, Maus, Ratte | |
| Zitierte Arten: Human, Maus | |
| Hinweis-IHC: Antigendemaskierung mit TE-Puffer pH 9,0 empfohlen. (*) Wahlweise kann die Antigendemaskierung auch mit Citratpuffer pH 6,0 erfolgen. | |

Hintergrundinformationen

ALDH1A1 (Aldehyde dehydrogenase family 1 member A1), also named as ALDC, ALDH1 and PUMB1, belongs to the aldehyde dehydrogenase family. The ALDH1A1 gene encodes a liver cytosolic isoform of acetaldehyde dehydrogenase, an enzyme involved in the major pathway of alcohol metabolism after alcohol dehydrogenase. ALDH1A1 plays a critical role in protection against oxidative stress-induced cytotoxicity in lens epithelial cells (PMID:19296407). And it is important for multiple biological activities including drug resistance, cell differentiation, and oxidative stress response (PMID:19025616). As a novel cancer stem cell marker, ALDH1A1 can be used for tumors whose corresponding normal tissues express ALDH1 in relatively restricted or limited levels such as breast, lung, ovarian or colon cancer (PMID: 20422001). This antibody can also recognize some other members of the aldehyde dehydrogenase family. This antibody is specific to ALDH1A1.

Bemerkenswerte Veröffentlichungen

| Verfasser | Pubmed ID | Journal | Anwendung |
|----------------|-----------|--------------|-----------|
| Dandan Liu | 33367934 | Int J Oncol | WB |
| L Yang | 28895409 | Neoplasma | WB |
| Junlong Zhuang | 28839463 | Theranostics | WB |

Lagerung

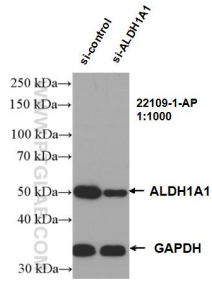
Lagerungsbedingungen:
Bei -20°C lagern. Nach dem Versand ein Jahr lang stabil
Lagerungspuffer:
PBS mit 0.02% Natriumazid und 50% Glycerin pH 7.3.
Aliquotieren ist nicht notwendig bei -20°C Lagerung

*** 20ul-Größen enthalten 0.1% BSA

For technical support and original validation data for this product please contact:
T: 1 (888) 4PTGLAB (1-888-478-4522) (toll free in USA), or 1(312) 455-8498 (outside USA)
E: proteintech@ptglab.com
W: ptglab.com

This product is exclusively available under Proteintech Group brand and is not available to purchase from any other manufacturer.

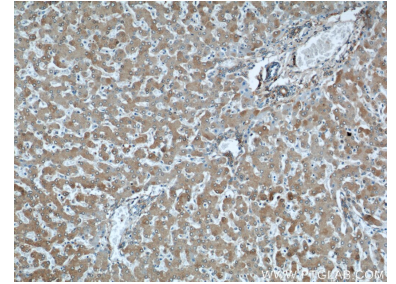
Ausgewählte Validierungsdaten



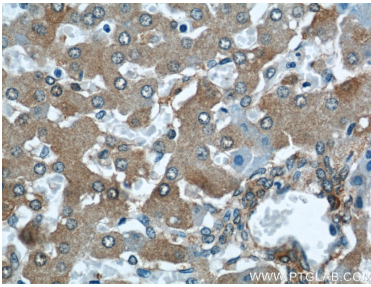
WB result of ALDH1A1 antibody (22109-1-AP; 1:1000; incubated at room temperature for 1.5 hours) with sh-Control and sh-ALDH1A1 transfected K-562 cells.



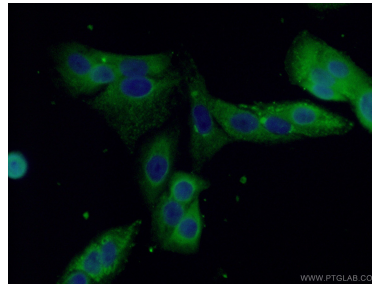
human liver tissue were subjected to SDS PAGE followed by western blot with 22109-1-AP (ALDH1A1 antibody) at dilution of 1:1000 incubated at room temperature for 1.5 hours.



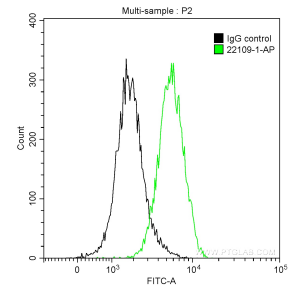
Immunohistochemical analysis of paraffin-embedded human liver using 22109-1-AP (ALDH1A1 antibody) at dilution of 1:50 (under 10x lens).



Immunohistochemical analysis of paraffin-embedded human liver using 22109-1-AP (ALDH1A1 antibody) at dilution of 1:50 (under 40x lens).



Immunofluorescent analysis of (-20°C Ethanol) fixed A549 cells using 22109-1-AP (ALDH1A1 antibody) at dilution of 1:50 and Alexa Fluor 488-conjugated AffiniPure Goat Anti-Rabbit IgG(H+L).



1×10^6 HeLa cells were intracellularly stained with 0.2 μ g Anti-Human ALDH1A1-specific (22109-1-AP) and CoraLite®488-Conjugated AffiniPure Goat Anti-Rabbit IgG(H+L) at dilution 1:1000 (green), and 0.2 μ g Control Antibody. Cells were fixed with 90% MeOH.