

Nur für Forschungszwecke

# Integrin alpha-1 Polyklonaler Antikörper



Katalog-Nr.: 22146-1-AP

Vorgestelltes Produkt

7 Publikationen

## Allgemeine Informationen

<b>Katalog-Nr.:</b> 22146-1-AP	<b>GenBank-Zugangsnummer:</b> BC137121	<b>Reinigungsmethode:</b> Antigen-Affinitätsreinigung
<b>Größe:</b> 150ul, Konzentration: 240 µg/ml von Nanodrop und 207 µg/ml durch die Bradford-Methode mit BSA als Standard;	<b>GeneID (NCBI):</b> 3672	<b>Empfohlene Verdünnungen:</b> IHC 1:50-1:500
<b>Wirt:</b> Kaninchen	<b>Vollständiger Name:</b> integrin, alpha 1	
<b>Isotyp:</b> IgG	<b>Berechnete Masse:</b> 1179 aa, 131 kDa	
<b>Immunogen Katalognummer:</b> AG17584	<b>Beobachtete Masse:</b> 180 kDa	

## Anwendungen

<b>Geprüfte Anwendungen:</b> FC, IHC, WB, ELISA	<b>Positivkontrollen:</b> IHC: humanes Lebergewebe, humanes Tonsillitissgewebe
<b>In Publikationen genannte Anwendungen:</b> IF, IHC, WB	
<b>Getestete Reaktivität:</b> Human	
<b>Zitierte Arten:</b> Human, Ratte	

**Hinweis-IHC: Antigendemaskierung mit TE-Puffer pH 9,0 empfohlen. (\*) Wahlweise kann die Antigendemaskierung auch mit Citratpuffer pH 6,0 erfolgen.**

## Hintergrundinformationen

The integrins are a superfamily of cell adhesion receptors that bind to extracellular matrix ligands, cell-surface ligands, and soluble ligands (PMID: 17543136). They are transmembrane  $\alpha\beta$  heterodimers and at least 24 distinct integrin heterodimers are formed by the combination of 18  $\alpha$  and eight  $\beta$  known subunits (PMID: 17543136; 20029421). In addition to mediating cell adhesion, integrins also play important roles in modulating signal transduction pathways that control cellular responses including migration, proliferation, differentiation, and apoptosis (PMID: 19118207). Integrin alpha-1 (ITGA1, CD49a) combines with the beta 1 subunit (ITGB1, CD29) to form a cell-surface receptor for collagen and laminin. This receptor is involved in cell-cell adhesion and may play a role in inflammation and fibrosis. Integrin alpha-1 is a transmembrane glycoprotein with an apparent molecular weight of 180-250 kDa, larger than the calculated molecular weight of 131 kDa (PMID: 2475259; 3257425; 11557277; 18840653).

## Bemerkenswerte Veröffentlichungen

Verfasser	Pubmed ID	Journal	Anwendung
Meng-Meng Wei	33058923	J Ethnopharmacol	WB
Keqiu Jiang	33184263	Cell Death Dis	WB
Junfen Xu	32626940	Int J Oncol	WB, IHC, IF

## Lagerung

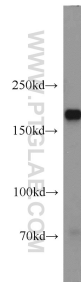
**Lagerungsbedingungen:**  
Bei -20°C lagern. Nach dem Versand ein Jahr lang stabil  
**Lagerungspuffer:**  
PBS mit 0.02% Natriumazid und 50% Glycerin pH 7.3.  
Aliquotieren ist nicht notwendig bei -20°C Lagerung

\*\*\* 20ul-Größen enthalten 0.1% BSA

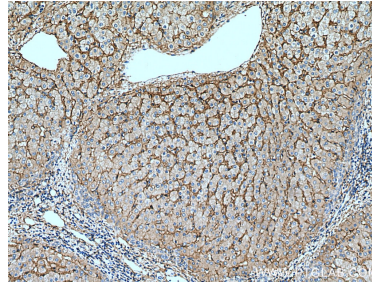
For technical support and original validation data for this product please contact:  
T: 1 (888) 4PTGLAB (1-888-478-4522) (toll free in USA), or 1(312) 455-8498 (outside USA)  
E: proteintech@ptglab.com  
W: ptglab.com

This product is exclusively available under Proteintech Group brand and is not available to purchase from any other manufacturer.

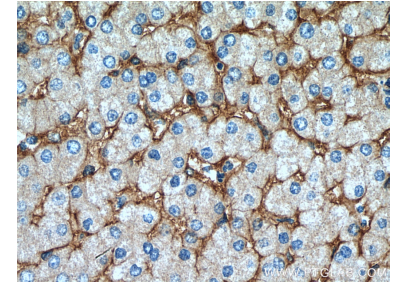
## Ausgewählte Validierungsdaten



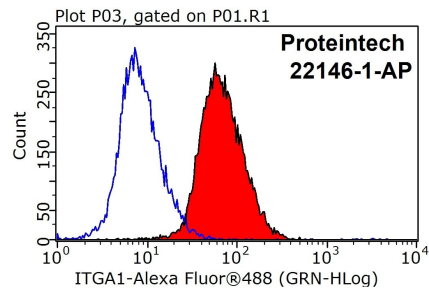
HepG2 cells were subjected to SDS PAGE followed by western blot with 22146-1-AP (ITGA1 antibody) at dilution of 1:1000 incubated at room temperature for 1.5 hours.



Immunohistochemical analysis of paraffin-embedded human liver tissue slide using 22146-1-AP (Integrin Alpha 1 antibody) at dilution of 1:200 (under 10x lens). Heat mediated antigen retrieval with Tris-EDTA buffer (pH 9.0).



Immunohistochemical analysis of paraffin-embedded human liver tissue slide using 22146-1-AP (Integrin Alpha 1 antibody) at dilution of 1:200 (under 40x lens). Heat mediated antigen retrieval with Tris-EDTA buffer (pH 9.0).



1X10<sup>6</sup> HeLa cells were stained with 0.2ug Integrin alpha-1 antibody (22146-1-AP, red) and control antibody (blue). Fixed with 90% MeOH blocked with 3% BSA (30 min). Alexa Fluor 488-conjugated AffiniPure Goat Anti-Rabbit IgG(H+L) with dilution 1:1000.