

Nur für Forschungszwecke

Kindlin 1 Polyklonaler Antikörper

Katalog-Nr.: 22215-1-AP

Vorgestelltes Produkt

4 Publikationen



Allgemeine Informationen

Katalog-Nr.: 22215-1-AP	GenBank-Zugangsnummer: BC035882	Reinigungsmethode: Antigen-Affinitätsreinigung
Größe: 150ul, Konzentration: 240 µg/ml von Nanodrop und 193 µg/ml durch die Bradford-Methode mit BSA als Standard;	GeneID (NCBI): 55612	Empfohlene Verdünnungen: WB 1:300-1:1000 IHC 1:20-1:200 IF 1:10-1:100
Wirt: Kaninchen	Vollständiger Name: fermitin family homolog 1 (Drosophila)	
Isotyp: IgG	Berechnete Masse: 677 aa, 77 kDa	
Immunogen Katalognummer: AG17543	Beobachtete Masse: 70-77 kDa	

Anwendungen

Geprüfte Anwendungen: IF, IHC, WB, ELISA	Positivkontrollen: WB : Mausnierengewebe, COLO 320-Zellen, HEK-293-Zellen IHC : humanes Pankreasgewebe, humanes Kolonkarzinomgewebe, humanes Pankreaskarzinomgewebe IF : HEK-293-Zellen,
In Publikationen genannte Anwendungen: IF, IHC, WB	
Getestete Reaktivität: Human, Maus	
Zitierte Arten: Human, Maus, Ratte	

Hinweis-IHC: Antigenmaskierung mit TE-Puffer pH 9,0 empfohlen. (*) Wahlweise kann die Antigenmaskierung auch mit Citratpuffer pH 6,0 erfolgen.

Hintergrundinformationen

Kindlin-1 is a FERM domain containing adaptor protein that is found predominantly at cell-extracellular matrix adhesions where it binds to β -integrin subunits and is required for integrin activation. Loss of function mutations in the FERMT1 gene which encodes Kindlin-1 leads to the development of Kindler Syndrome (KS) an autosomal recessive skin disorder characterized by skin blistering, photosensitivity, and predisposition to aggressive squamous cell carcinoma (SCC).

Bemerkenswerte Veröffentlichungen

Verfasser	Pubmed ID	Journal	Anwendung
Baisong Zhao	34618385	Eur J Neurosci	WB
Congcong Shen	28290610	Int J Mol Med	IHC,IF
Lingling Li	35144617	Cancer Cell Int	WB,IHC

Lagerung

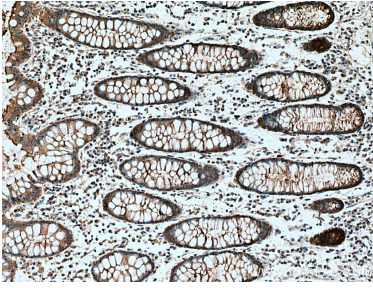
Lagerungsbedingungen:
Bei -20°C lagern. Nach dem Versand ein Jahr lang stabil
Lagerungspuffer:
PBS mit 0.02% Natriumazid und 50% Glycerin pH 7.3.
Aliquotieren ist nicht notwendig bei -20°C Lagerung

*** 20ul-Größen enthalten 0.1% BSA

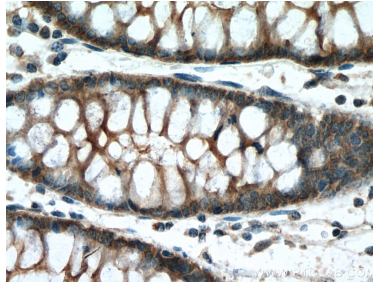
For technical support and original validation data for this product please contact:
T: 1 (888) 4PTGLAB (1-888-478-4522) (toll free in USA), or 1(312) 455-8498 (outside USA)
E: proteintech@ptglab.com
W: ptglab.com

This product is exclusively available under Proteintech Group brand and is not available to purchase from any other manufacturer.

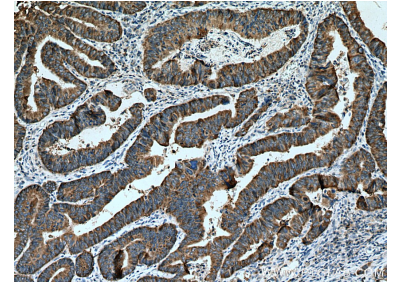
Ausgewählte Validierungsdaten



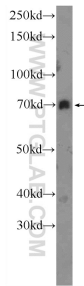
Immunohistochemical analysis of paraffin-embedded human colon cancer tissue slide using 22215-1-AP (FERMT1 antibody) at dilution of 1:200 (under 10x lens). Heat mediated antigen retrieval with Tris-EDTA buffer (pH 9.0).



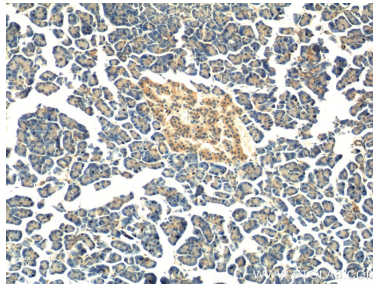
Immunohistochemical analysis of paraffin-embedded human colon cancer tissue slide using 22215-1-AP (FERMT1 antibody) at dilution of 1:200 (under 40x lens). Heat mediated antigen retrieval with Tris-EDTA buffer (pH 9.0).



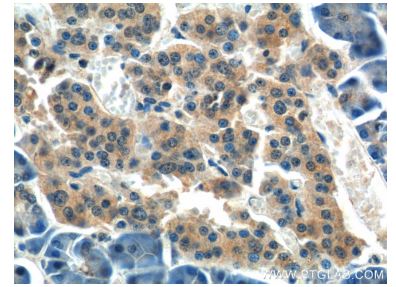
Immunohistochemical analysis of paraffin-embedded human colon cancer tissue slide using 22215-1-AP (FERMT1 antibody) at dilution of 1:200 (under 10x lens). Heat mediated antigen retrieval with Tris-EDTA buffer (pH 9.0).



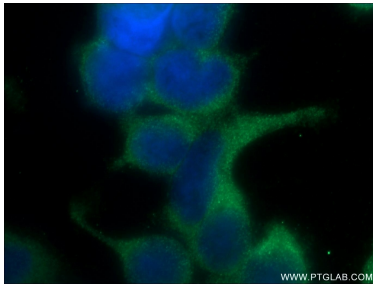
mouse kidney tissue were subjected to SDS PAGE followed by western blot with 22215-1-AP (FERMT1 Antibody) at dilution of 1:300 incubated at room temperature for 1.5 hours.



Immunohistochemical analysis of paraffin-embedded human pancreas tissue slide using 22215-1-AP (FERMT1 Antibody) at dilution of 1:50 (under 10x lens).



Immunohistochemical analysis of paraffin-embedded human pancreas tissue slide using 22215-1-AP (FERMT1 Antibody) at dilution of 1:50 (under 40x lens).



Immunofluorescent analysis of HEK-293 cells using 22215-1-AP (FERMT1 antibody) at dilution of 1:25 and Alexa Fluor 488-conjugated AffiniPure Goat Anti-Rabbit IgG(H+L).