

Nur für Forschungszwecke

# Cytokeratin 14 Polyklonaler Antikörper



Katalog-Nr.: 22221-1-AP

1 Publikationen

## Allgemeine Informationen

<b>Katalog-Nr.:</b> 22221-1-AP	<b>GenBank-Zugangsnummer:</b> BC002690	<b>Reinigungsmethode:</b> Antigen-Affinitätsreinigung
<b>Größe:</b> 150ul, Konzentration: 300 µg/ml von Nanodrop und 233 µg/ml durch die Bradford-Methode mit BSA als Standard;	<b>GeneID (NCBI):</b> 3861	<b>Empfohlene Verdünnungen:</b> WB 1:500-1:2000 IP 0.5-4.0 µg für IP und 1:500-1:2000 für WB
<b>Wirt:</b> Kaninchen	<b>Vollständiger Name:</b> keratin 14	<b>IHC 1:50-1:500</b> <b>IF 1:50-1:500</b>
<b>Isotyp:</b> IgG	<b>Berechnete Masse:</b> 472 aa, 52 kDa	
<b>Immunogen Katalognummer:</b> AG17559	<b>Beobachtete Masse:</b> 52 kDa	

## Anwendungen

<b>Geprüfte Anwendungen:</b> FC, IF, IHC, IP, WB, ELISA	<b>Positivkontrollen:</b> WB : Maushautgewebe, IP : Maushautgewebe, IHC : humanes Hautgewebe, humanes Lungenkarzinomgewebe, humanes Mammakarzinomgewebe, humanes Zervixkarzinomgewebe IF : HepG2-Zellen,
<b>In Publikationen genannte Anwendungen:</b> WB	
<b>Getestete Reaktivität:</b> Human, Maus	
<b>Zitierte Arten:</b> Hamster, Human	
<b>Hinweis-IHC: Antigenmaskierung mit TE-Puffer pH 9,0 empfohlen. (*) Wahlweise kann die Antigenmaskierung auch mit Citratpuffer pH 6,0 erfolgen.</b>	

## Hintergrundinformationen

Keratins are a large family of proteins that form the intermediate filament cytoskeleton of epithelial cells, which are classified into two major sequence types. Type I keratins are a group of acidic intermediate filament proteins, including K9-K23, and the hair keratins Ha1-Ha8. Type II keratins are the basic or neutral counterparts to the acidic type I keratins, including K1-K8, and the hair keratins, Hb1-Hb6. Keratin 14 is a type I cytokeratin. It is usually found as a heterotetramer with keratin 5. Keratins K14 and K5 have long been considered to be biochemical markers of the stratified squamous epithelia, including epidermis. This antibody is specifically against KRT14.

## Bemerkenswerte Veröffentlichungen

Verfasser	Pubmed ID	Journal	Anwendung
S Vijayalingam	24874842	Cancer Gene Ther	WB

## Lagerung

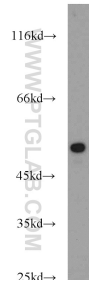
**Lagerungsbedingungen:**  
Bei -20°C lagern. Nach dem Versand ein Jahr lang stabil  
**Lagerungspuffer:**  
PBS mit 0.02% Natriumazid und 50% Glycerin pH 7.3.  
Aliquotieren ist nicht notwendig bei -20°C Lagerung

\*\*\* 20ul-Größen enthalten 0.1% BSA

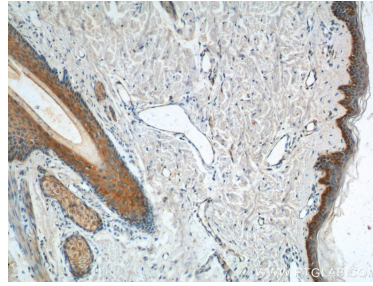
For technical support and original validation data for this product please contact:  
T: 1 (888) 4PTGLAB (1-888-478-4522) (toll free in USA), or 1(312) 455-8498 (outside USA)  
E: proteintech@ptglab.com  
W: ptglab.com

This product is exclusively available under Proteintech Group brand and is not available to purchase from any other manufacturer.

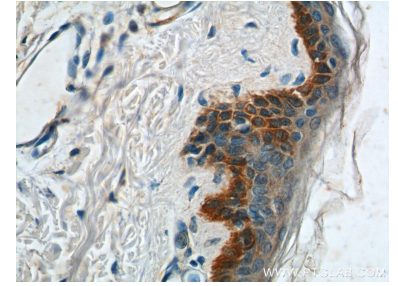
## Ausgewählte Validierungsdaten



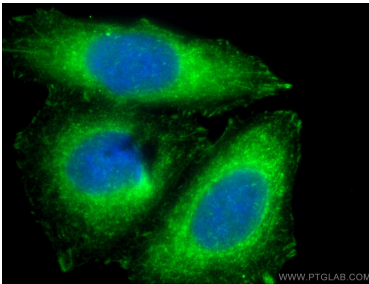
mouse skin tissue were subjected to SDS PAGE followed by western blot with 22221-1-AP (Cytokeratin 14 antibody) at dilution of 1:1000 incubated at room temperature for 1.5 hours.



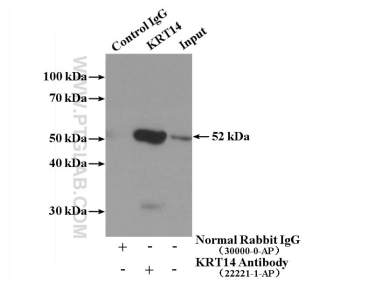
Immunohistochemical analysis of paraffin-embedded human skin tissue slide using 22221-1-AP (Cytokeratin 14 antibody at dilution of 1:200 (under 10x lens).



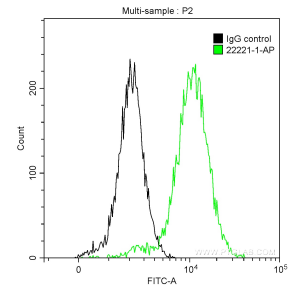
Immunohistochemical analysis of paraffin-embedded human skin tissue slide using 22221-1-AP (Cytokeratin 14 antibody at dilution of 1:200 (under 40x lens).



Immunofluorescent analysis of (-20°C Ethanol) fixed HepG2 cells using 22221-1-AP (Cytokeratin 14 antibody) at dilution of 1:50 and Alexa Fluor 488-conjugated AffiniPure Goat Anti-Rabbit IgG(H+L).



IP Result of anti-Cytokeratin 14 (IP:22221-1-AP, 4ug; Detection:22221-1-AP 1:1000) with mouse skin tissue lysate 3200ug.



1x10<sup>6</sup> A431 cells were intracellularly stained with 0.2 ug Anti-Human Cytokeratin 14 (22221-1-AP) and CoraLite®488-Conjugated AffiniPure Goat Anti-Rabbit IgG(H+L) at dilution 1:1000 (green), and 0.2 ug Control Antibody. Cells were fixed with 90% MeOH.