

PAX8 Polyklonaler Antikörper

Katalog-Nr.: 22255-1-AP

Allgemeine Informationen

Katalog-Nr.:

22255-1-AP

Größe:

150ul

Wirt:

Kaninchen

Isotyp:

IgG

Immunogen Katalognummer:

AG17759

GenBank-Zugangsnummer:

BC001060

GeneID (NCBI):

7849

Vollständiger Name:

paired box 8

Berechnete Masse:

450 aa, 48 kDa

Reinigungsmethode:

Antigen-Affinitätsreinigung

Anwendungen

Geprüfte Anwendungen:

WB, ELISA

Getestete Reaktivität:

Human

Hintergrundinformationen

PAX8 is a member of the paired box (PAX) family of transcription factors, typically containing a paired box domain and a paired-type homeodomain. It is expressed during organogenesis of the thyroid gland, kidney and Mullerian system. It is thought to regulate the expression of Wilms tumor suppressor (WT1) gene and mutations in PAX8 have been associated with Wilms tumor cells, thyroid and ovarian carcinomas. PAX8 is a useful marker in distinguishing ovarian carcinomas from mammary carcinomas (PMID: 18724243). PAX8 is expressed in a high percentage of ovarian serous, endometrioid, and clear cell carcinomas, but only rarely in primary ovarian mucinous adenocarcinomas.

PAX8 has 5 isoforms with calculated MW 31kd, 34kd, 41kd, 43kd and 48kd. And there is a 60kd band corresponding to the electrophoretic mobility of PAX8 (PMID:15650356). Proteintech's 10336-1-AP antibody has cross-reactivities with the other PAX family members.

Lagerung

Lagerungsbedingungen:

Bei -20°C lagern. Nach dem Versand ein Jahr lang stabil

Lagerungspuffer:

PBS mit 0.02% Natriumazid und 50% Glycerin pH 7.3.

Aliquotieren ist nicht notwendig bei -20°C Lagerung

*** 20ul-Größen enthalten 0.1% BSA

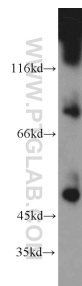
For technical support and original validation data for this product please contact:

T: 1 (888) 4PTGLAB (1-888-478-4522) (toll free
in USA), or 1(312) 455-8498 (outside USA)

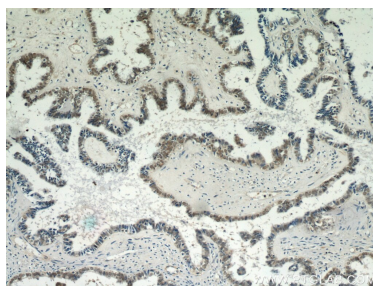
E: proteintech@ptglab.com
W: ptglab.com

This product is exclusively available under Proteintech Group brand and is not available to purchase from any other manufacturer.

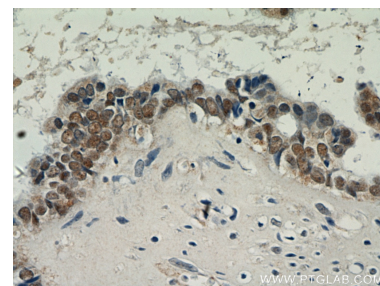
Ausgewählte Validierungsdaten



A2780 cells were subjected to SDS PAGE followed by western blot with 22255-1-AP (PAX8 antibody) at dilution of 1:1000 incubated at room temperature for 1.5 hours.



Immunohistochemical analysis of paraffin-embedded human ovary tumor using 22255-1-AP (PAX8 antibody) at dilution of 1:100 (under 10x lens).



Immunohistochemical analysis of paraffin-embedded human ovary tumor using 22255-1-AP (PAX8 antibody) at dilution of 1:100 (under 40x lens).