

Nur für Forschungszwecke

# CREBBP Polyklonaler Antikörper

Katalog-Nr.:22277-1-AP



## Allgemeine Informationen

<b>Katalog-Nr.:</b> 22277-1-AP	<b>GenBank-Zugangsnummer:</b> NM_004380	<b>Reinigungsmethode:</b> Antigen-Affinitätsreinigung
<b>Größe:</b> 150ul , Konzentration: 230 µg/ml von Nanodrop;	<b>GeneID (NCBI):</b> 1387	<b>Empfohlene Verdünnungen:</b> WB 1:1000-1:4000 IF 1:400-1:1600
<b>Wirt:</b> Kaninchen	<b>Vollständiger Name:</b> CREB binding protein	
<b>Isotyp:</b> IgG	<b>Berechnete Masse:</b> 265 kDa	

## Anwendungen

<b>Geprüfte Anwendungen:</b> IF, WB, ELISA	<b>Positivkontrollen:</b> WB : HeLa-Zellen, Jurkat-Zellen IF : HeLa-Zellen,
<b>Getestete Reaktivität:</b> Human	

## Hintergrundinformationen

The acetyltransferase CREB-binding protein (CREBBP; also known as CBP or KAT2A) and E1A-binding protein P300 (EP300; also known as P300 or KAT2B) are two closely related regulators. Both are widely expressed within and outside the hematopoietic system and serve as tumor activators or suppressors depending on the situation. CREBBP/EP300 regulate various key physiological functions, including cell apoptosis, proliferation and differentiation, DNA repair, and somatic cell reprogramming.

## Lagerung

**Lagerungsbedingungen:**  
Bei -20°C lagern. Nach dem Versand ein Jahr lang stabil  
**Lagerungspuffer:**  
PBS mit 0.02% Natriumazid und 50% Glycerin pH 7.3.  
Aliquotieren ist nicht notwendig bei -20°C Lagerung

\*\*\* 20ul-Größen enthalten 0.1% BSA

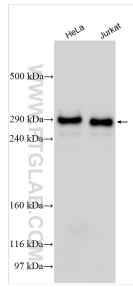
For technical support and original validation data for this product please contact:

T: 1 (888) 4PTGLAB (1-888-478-4522) (toll free  
in USA), or 1(312) 455-8498 (outside USA)

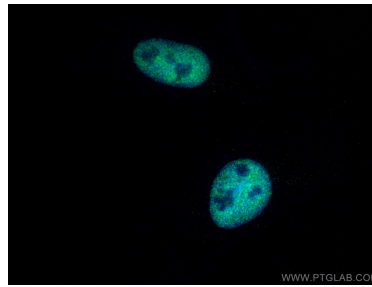
E: [proteintech@ptglab.com](mailto:proteintech@ptglab.com)  
W: [ptglab.com](http://ptglab.com)

This product is exclusively available under Proteintech Group brand and is not available to purchase from any other manufacturer.

## Ausgewählte Validierungsdaten



Various lysates were subjected to SDS PAGE followed by western blot with 22277-1-AP (CREBBP antibody) at dilution of 1:2000 incubated at room temperature for 1.5 hours.



Immunofluorescent analysis of (4% PFA) fixed HeLa cells using CREBBP antibody (22277-1-AP) at dilution of 1:800 and CoraLite®488-Conjugated AffiniPure Goat Anti-Rabbit IgG(H+L).