

Nur für Forschungszwecke

# MYH1-motor domain Polyklonaler Antikörper



Katalog-Nr.: 22282-1-AP

## Allgemeine Informationen

|  |   |  |
|--|---|--|
| <b>Katalog-Nr.:</b><br>22282-1-AP  | <b>GenBank-Zugangsnummer:</b><br>NM_005963                                  | <b>Reinigungsmethode:</b><br>Antigen-Affinitätsreinigung             |
| <b>Größe:</b><br>150ul, Konzentration: 700 µg/ml von Nanodrop und 413 µg/ml durch die Bradford-Methode mit BSA als Standard; | <b>GeneID (NCBI):</b><br>4619   | <b>Empfohlene Verdünnungen:</b><br>WB 1:500-1:2000<br>IHC 1:20-1:200 |
| <b>Wirt:</b><br>Kaninchen  | <b>Vollständiger Name:</b><br>myosin, heavy chain 1, skeletal muscle, adult |  |
| <b>Isotyp:</b><br>IgG  | <b>Berechnete Masse:</b><br>223 kDa   |  |
|  | <b>Beobachtete Masse:</b><br>223 kDa  |  |

## Anwendungen

|  |   |
|--|---|
| <b>Geprüfte Anwendungen:</b><br>FC, IHC, WB, ELISA | <b>Positivkontrollen:</b>   |
| <b>Getestete Reaktivität:</b><br>Human             | <b>WB:</b> humanes Skelettmuskelgewebe,<br><b>IHC:</b> humanes Skelettmuskelgewebe, |

**Hinweis-IHC: Antigendemaskierung mit TE-Puffer pH 9,0 empfohlen. (\*) Wahlweise kann die Antigendemaskierung auch mit Citratpuffer pH 6,0 erfolgen.**

## Hintergrundinformationen

MYH1 (MyHC-2x) encodes the IIX isoform of myosin heavy chain (MyHC). Myosin is a large, ubiquitous, motor protein that generates force through its interaction with actin, thus involving it in a number of cellular processes including cytokinesis, karyokinesis, cell migration, and muscle contraction. Muscle fibers can be divided as type 1 (slow) and type 2 (fast). MYH1 belongs to type 2.

## Lagerung

**Lagerungsbedingungen:**  
Bei -20°C lagern. Nach dem Versand ein Jahr lang stabil  
**Lagerungspuffer:**  
PBS mit 0.02% Natriumazid und 50% Glycerin pH 7.3.  
Aliquotieren ist nicht notwendig bei -20°C Lagerung

\*\*\* 20ul-Größen enthalten 0.1% BSA

For technical support and original validation data for this product please contact:

T: 1 (888) 4PTGLAB (1-888-478-4522) (toll free in USA), or 1(312) 455-8498 (outside USA)

E: proteintech@ptglab.com  
W: ptglab.com

This product is exclusively available under Proteintech Group brand and is not available to purchase from any other manufacturer.

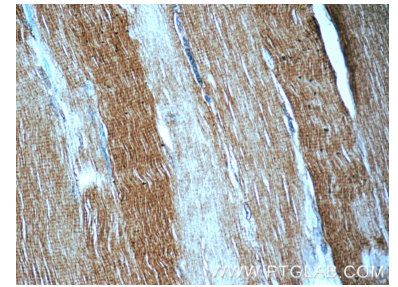
## Ausgewählte Validierungsdaten



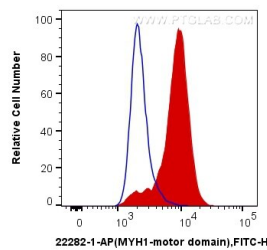
human skeletal muscle tissue were subjected to SDS PAGE followed by western blot with 22282-1-AP (MYH1 Antibody) at dilution of 1:1000 incubated at room temperature for 1.5 hours.



Immunohistochemical analysis of paraffin-embedded human skeletal muscle tissue slide using 22282-1-AP (MYH1 Antibody) at dilution of 1:50 (under 10x lens).



Immunohistochemical analysis of paraffin-embedded human skeletal muscle tissue slide using 22282-1-AP (MYH1 Antibody) at dilution of 1:50 (under 40x lens).



1X10<sup>6</sup> C2C12 cells were intracellularly stained with 0.4 ug Anti-Human MYH1-motor domain (22282-1-AP) and CoraLite<sup>®</sup>488-Conjugated AffiniPure Goat Anti-Rabbit IgG(H+L) at dilution 1:1000 (red), or 0.4 ug Control Antibody. Cells were fixed with 4% PFA and permeabilized with Flow Cytometry Perm Buffer (PF00011-C).