

Nur für Forschungszwecke

CC2D2A Polyklonaler Antikörper

Katalog-Nr.: 22293-1-AP

3 Publikationen



Allgemeine Informationen

| | | |
|--|---|---|
| Katalog-Nr.: 22293-1-AP | GenBank-Zugangsnummer: NM_020785 | Reinigungsmethode: Antigen-Affinitätsreinigung |
| Größe: 150ul, Konzentration: 900 µg/ml von Nanodrop und 540 µg/ml durch die Bradford-Methode mit BSA als Standard; | GeneID (NCBI): 57545 | Empfohlene Verdünnungen: WB 1:200-1:1000 IHC 1:20-1:200 IF 1:20-1:200 |
| Wirt: Kaninchen | Vollständiger Name: coiled-coil and C2 domain containing 2A | |
| Isotyp: IgG | Berechnete Masse: 186 kDa | |
| | Beobachtete Masse: 190 kDa | |

Anwendungen

| | |
|---|---|
| Geprüfte Anwendungen: IF, IHC, WB, ELISA | Positivkontrollen: WB : fetales humanes Hirngewebe, IHC : humanes Lungenkarzinomgewebe, IF : hTERT-RPE1-Zellen, |
| In Publikationen genannte Anwendungen: IF, WB | |
| Getestete Reaktivität: Human, Maus | |
| Zitierte Arten: Human | |
| Hinweis-IHC: Antigendemaskierung mit TE-Puffer pH 9,0 empfohlen. (*) Wahlweise kann die Antigendemaskierung auch mit Citratpuffer pH 6,0 erfolgen. | |

Hintergrundinformationen

CC2D2A, also named as KIAA1345, may be involved in cilia formation. CC2D2A encodes a protein with similar overall structure to RPGRIIP1L, including coiled-coil domains, a C2 domain, and an overlapping centrosomal protein-related domain. CC2D2A physically interacts with CEP290, and loss of Cc2d2a function in the zebrafish sentinel mutant results in abnormal body shape and pronephric (kidney) cysts that is strongly exacerbated by knockdown of Cep290 function. (PMID:19778711) Defects in CC2D2A are the cause of Meckel syndrome type 6 (MKS6). Defects in CC2D2A are the cause of Joubert syndrome type 9 (JBT59). The antibody is specific to CC2D2A.

Bemerkenswerte Veröffentlichungen

| Verfasser | Pubmed ID | Journal | Anwendung |
|------------------|-----------|---------------|-----------|
| Quynh P H Nguyen | 33038334 | Dev Cell | IF |
| Daimin Xiao | 27959436 | Mol Med Rep | |
| Sachiko Miyamoto | 36970932 | Ann Hum Genet | WB |

Lagerung

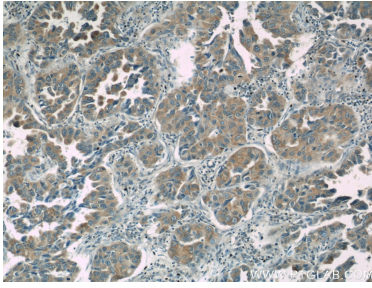
Lagerungsbedingungen:
Bei -20°C lagern. Nach dem Versand ein Jahr lang stabil
Lagerungspuffer:
PBS mit 0.02% Natriumazid und 50% Glycerin pH 7.3.
Aliquotieren ist nicht notwendig bei -20°C Lagerung

*** 20ul-Größen enthalten 0.1% BSA

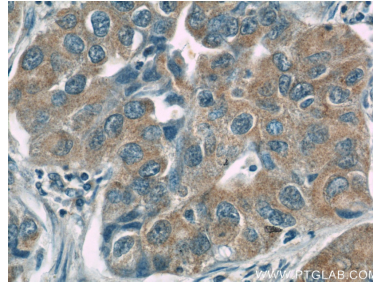
For technical support and original validation data for this product please contact:
T: 1 (888) 4PTGLAB (1-888-478-4522) (toll free in USA), or 1(312) 455-8498 (outside USA)
E: proteintech@ptglab.com
W: ptglab.com

This product is exclusively available under Proteintech Group brand and is not available to purchase from any other manufacturer.

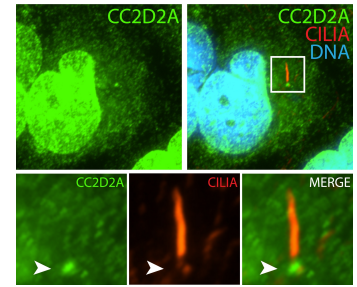
Ausgewählte Validierungsdaten



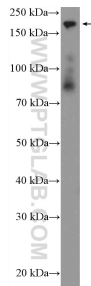
Immunohistochemical analysis of paraffin-embedded human lung cancer slide using 22293-1-AP (CC2D2A Antibody) at dilution of 1:50 (under 10x lens).



Immunohistochemical analysis of paraffin-embedded human lung cancer slide using 22293-1-AP (CC2D2A Antibody) at dilution of 1:50 (under 40x lens).



IF result (strong nucleus and the base stain) of anti-CC2D2A (22293-1-AP, 1:50) with serum-starved hTERT-RPE1 (MeOH fixed) by Dr. Moshe Kim.



fetal human brain tissue were subjected to SDS PAGE followed by western blot with 22293-1-AP (CC2D2A Antibody) at dilution of 1:300 incubated at room temperature for 1.5 hours.