

Nur für Forschungszwecke

BRCA1 Polyklonaler Antikörper

Katalog-Nr.:22362-1-AP

Vorgestelltes Produkt

25 Publikationen



Allgemeine Informationen

Katalog-Nr.: 22362-1-AP	GenBank-Zugangsnummer: BC115037	Reinigungsmethode: Antigen-Affinitätsreinigung
Größe: 150ul, Konzentration: 600 µg/ml von Nanodrop;	GeneID (NCBI): 672	Empfohlene Verdünnungen: WB 1:1000-1:4000
Wirt: Kaninchen	Vollständiger Name: breast cancer 1, early onset	
Isotyp: IgG	Berechnete Masse: 1863 aa, 208 kDa	
Immunogen Katalognummer: AG17946	Beobachtete Masse: 300 kDa	

Anwendungen

Geprüfte Anwendungen: WB,ELISA	Positivkontrollen: WB : MCF-7-Zellen,
In Publikationen genannte Anwendungen: ChIP, IF, IHC, IP, WB	
Getestete Reaktivität: Human	
Zitierte Arten: Human, Maus	

Hintergrundinformationen

BRCA1, also named as RNF53, plays a central role in DNA repair by facilitating cellular response to DNA repair. It is required for appropriate cell cycle arrests after ionizing irradiation in both the S-phase and the G2 phase of the cell cycle. The BRCA1-BARD1 heterodimer coordinates a diverse range of cellular pathways such as DNA damage repair, ubiquitination and transcriptional regulation to maintain genomic stability. BRCA1 acts by mediating ubiquitin E3 ligase activity that is required for its tumor suppressor function. It is involved in transcriptional regulation of P21 in response to DNA damage. BRCA1 is required for FANCD2 targeting to sites of DNA damage. It may function as a transcriptional regulator. BRCA1 inhibits lipid synthesis by binding to inactive phosphorylated ACACA and preventing its dephosphorylation. The antibody is specific to BRCA1. BRCA1 appears to produce multiple splice variants. BRCA1 is a nuclear protein with a molecular mass of 220 kDa. The present study describes the isolation and expression of two cDNAs of BRCA1, including a splice variant designated BRCA1D672-4095. BRCA1D672-4095 is generated by exclusion of exon 11 by in-frame splicing and produces a 97 kDa protein. In contrast to BRCA1, BRCA1D672-4095 localizes to the cytoplasm.

Bemerkenswerte Veröffentlichungen

Verfasser	Pubmed ID	Journal	Anwendung
X Bian	28945226	Oncogene	WB,IHC
Limei Ji	34455779	J Med Chem	WB
Jingyuan Sun	33087136	J Exp Clin Cancer Res	WB

Lagerung

Lagerungsbedingungen:
Bei -20°C lagern. Nach dem Versand ein Jahr lang stabil

Lagerungspuffer:
PBS mit 0.02% Natriumazid und 50% Glycerin pH 7.3.

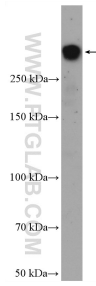
Aliquotieren ist nicht notwendig bei -20°C Lagerung

*** 20ul-Größen enthalten 0.1% BSA

For technical support and original validation data for this product please contact:
T: 1 (888) 4PTGLAB (1-888-478-4522) (toll free in USA), or 1(312) 455-8498 (outside USA)
E: proteintech@ptglab.com
W: ptglab.com

This product is exclusively available under Proteintech Group brand and is not available to purchase from any other manufacturer.

Ausgewählte Validierungsdaten



MCF-7 cells were subjected to SDS PAGE followed by western blot with 22362-1-AP (BRCA1 antibody) at dilution of 1:2000 incubated at room temperature for 1.5 hours.