

Nur für Forschungszwecke

Syntenin-1 Polyklonaler Antikörper

Katalog-Nr.:22399-1-AP

Vorgestelltes Produkt

13 Publikationen



Allgemeine Informationen

Katalog-Nr.:
22399-1-AP

Größe:
150ul , Konzentration: 800 µg/ml von
Nanodrop und 367 µg/ml durch die
Bradford-Methode mit BSA als
Standard;

Wirt:
Kaninchen

Isotyp:
IgG

Immunogen Katalognummer:
AG18078

GenBank-Zugangsnummer:
BC113674

GeneID (NCBI):
6386

Vollständiger Name:
syndecan binding protein (syntenin)

Berechnete Masse:
298 aa, 32 kDa

Beobachtete Masse:
32 kDa

Reinigungsmethode:

Antigen-Affinitätsreinigung

Empfohlene Verdünnungen:

WB 1:500-1:2000
IP 0.5-4.0 ug für IP und 1:500-1:2000
für WB
IHC 1:50-1:500
IF 1:200-1:800

Anwendungen

Geprüfte Anwendungen:

FC, IF, IHC, IP, WB, ELISA

In Publikationen genannte Anwendungen:

IHC, WB

Getestete Reaktivität:

Human

Zitierte Arten:

Human, Maus

Hinweis-IHC: Antigenmaskierung mit TE-Puffer pH 9,0 empfohlen. (*) Wahlweise kann die Antigenmaskierung auch mit Citratpuffer pH 6,0 erfolgen.

Positivkontrollen:

WB : A549-Zellen, HeLa-Zellen, HepG2-Zellen,
humanes Plazenta-Gewebe

IP : HeLa-Zellen,

IHC : humanes Leberkarzinomgewebe, humanes
Herzgewebe

IF : HeLa-Zellen,

Hintergrundinformationen

Syntenin-1, also known as SDCBP (syndecan binding protein) and MDA-9 (melanoma differentiation-associated protein 9), was initially identified as a molecule linking syndecan-mediated signaling to the cytoskeleton. Syntenin-1 is a PDZ-domain-containing molecule that has many interaction partners, and regulates transmembrane-receptor trafficking, cell adhesion, tumor-cell metastasis and neuronal-synapse function. Syntenin-1 is primarily localized to membrane-associated adherens junctions and focal adhesions but is also found at the endoplasmic reticulum and nucleus.

Bemerkenswerte Veröffentlichungen

Verfasser	Pubmed ID	Journal	Anwendung
Qingyan Wu	36184032	Cell Mol Gastroenterol Hepatol	WB
Denghui Wei	32958903	Cell Res	WB
Ningye Ma	32902825	Cell Oncol (Dordr)	WB

Lagerung

Lagerungsbedingungen:

Bei -20°C lagern. Nach dem Versand ein Jahr lang stabil

Lagerungspuffer:

PBS mit 0.02% Natriumazid und 50% Glycerin pH 7.3.

Aliquotieren ist nicht notwendig bei -20°C Lagerung

*** 20ul-Größen enthalten 0.1% BSA

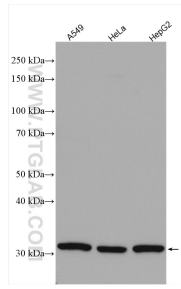
For technical support and original validation data for this product please contact:

T: 1 (888) 4PTGLAB (1-888-478-4522) (toll free
in USA), or 1(312) 455-8498 (outside USA)

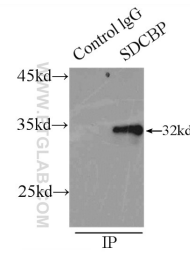
E: proteintech@ptglab.com
W: ptglab.com

This product is exclusively available under Proteintech Group brand and is not available to purchase from any other manufacturer.

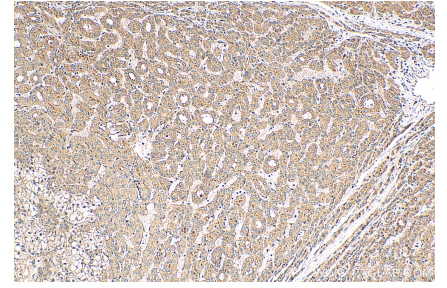
Ausgewählte Validierungsdaten



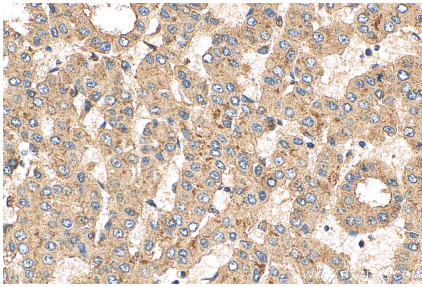
Various lysates were subjected to SDS PAGE followed by western blot with 22399-1-AP (Syntenin-1 antibody) at dilution of 1:1000 incubated at room temperature for 1.5 hours.



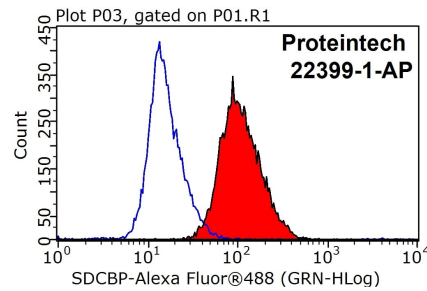
IP Result of anti-Syntenin-1 (IP:22399-1-AP, 3ug; Detection:22399-1-AP 1:1000) with HeLa cells lysate 2500ug.



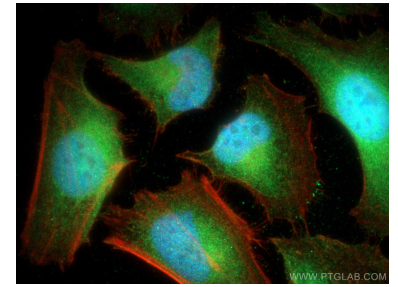
Immunohistochemical analysis of paraffin-embedded human liver cancer tissue slide using 22399-1-AP (Syntenin-1 antibody) at dilution of 1:200 (under 10x lens). Heat mediated antigen retrieval with Tris-EDTA buffer (pH 9.0).



Immunohistochemical analysis of paraffin-embedded human liver cancer tissue slide using 22399-1-AP (Syntenin-1 antibody) at dilution of 1:200 (under 40x lens). Heat mediated antigen retrieval with Tris-EDTA buffer (pH 9.0).



1X10⁶ HepG2 cells were stained with 0.2ug Syntenin-1 antibody (22399-1-AP, red) and control antibody (blue). Fixed with 90% MeOH blocked with 3% BSA (30 min). Alexa Fluor 488-conjugated AffiniPure Goat Anti-Rabbit IgG(H+L) with dilution 1:1000.



Immunofluorescent analysis of (4% PFA) fixed HeLa cells using Syntenin-1 antibody (22399-1-AP) at dilution of 1:400 and Coralite@488-Conjugated AffiniPure Goat Anti-Rabbit IgG(H+L), CL594-Phalloidin (red).