

Allgemeine Informationen

Katalog-Nr.: 22517-1-AP	GenBank-Zugangsnummer: BC137270	Reinigungsmethode: Antigen-affinitätsgereinigt
Größe: 150ul, Konzentration: 500 µg/ml von Nanodrop und 273 µg/ml durch die Bradford-Methode mit BSA als Standard;	GeneID (NCBI): 326	Empfohlene Verdünnungen: WB 1:500-1:2000 IHC 1:50-1:500 IF 1:50-1:500
Wirt: Kaninchen	Vollständiger Name: autoimmune regulator	
Isotyp: IgG	Berechnete Masse: 545 aa, 58 kDa	
Immunogen Katalognummer: AG18249	Beobachtete Masse: 58-69 kDa	

Anwendungen

Geprüfte Anwendungen: IF, IHC, WB, ELISA	Positivkontrollen:
In Publikationen genannte Anwendungen: IF, WB	WB: L02-Zellen, humanes Milzgewebe, humanes Plasmagewebe, Maus-Thymusgewebe, U-937-Zellen
Getestete Reaktivität: Human, Maus	IHC: humanes Thymusgewebe,
Zitierte Arten: Human, Maus	IF: HeLa-Zellen,

Hinweis-IHC: Antigendemaskierung mit TE-Puffer pH 9,0 empfohlen. (*) Wahlweise kann die Antigendemaskierung auch mit Citratpuffer pH 6,0 erfolgen.

Hintergrundinformationen

The function of the protein is not well defined, however it contains zinc finger motifs suggestive of a transcription factor. The protein (isoform 1) is localized to both the nucleus and cytoplasm. Three splice variant mRNAs products have been described [1]. The longer AIRE1 mRNA appears to be more abundant and includes exons 1 through 14. Splice variant AIRE2 includes a portion of the non-coding region of exon 1, an alternatively spliced longer exon 8, plus exons 9 through 14. Variant AIRE3 includes the same exon 1-8-9 sequences as found in AIRE2 but utilizes additional alternative splicing in exon 10 that shifts the reading frame such that a stop codon in exon 12 is utilized. The resulting protein products of these splice variants differ significantly. Defects in this gene cause the autosomal-recessive systemic autoimmune disease termed autoimmune polyendocrinopathy-candidiasis-ectodermal dystrophy (APECED).

Bemerkenswerte Veröffentlichungen

Verfasser	Pubmed ID	Journal	Anwendung
Zhongwei Xin	36115836	Nat Commun	IF
Yoshihiko Tomofuji	32601470	Nat Immunol	WB
H M Du	31238861	Biochemistry (Mosc)	WB

Lagerung

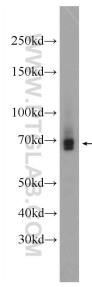
Lagerungsbedingungen:
Bei -20°C lagern. Nach dem Versand ein Jahr lang stabil
Lagerungspuffer:
PBS mit 0.02% Natriumazid und 50% Glycerin pH 7.3.
 Aliquotieren ist nicht notwendig bei -20°C Lagerung

***** 20ul-Größen enthalten 0.1% BSA**

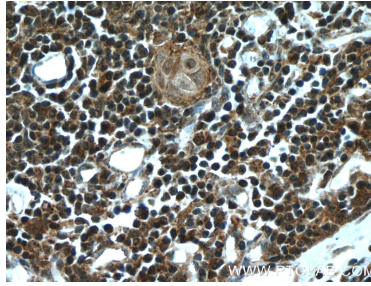
For technical support and original validation data for this product please contact:
 T: 1 (888) 4PTGLAB (1-888-478-4522) (toll free in USA), or 1(312) 455-8498 (outside USA)
 E: proteintech@ptglab.com
 W: ptglab.com

This product is exclusively available under Proteintech Group brand and is not available to purchase from any other manufacturer.

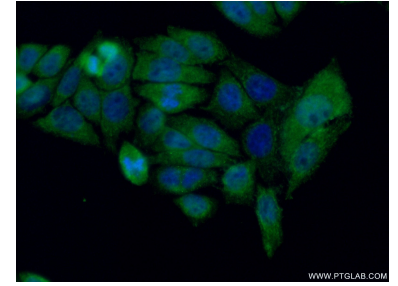
Ausgewählte Validierungsdaten



L02 cells were subjected to SDS PAGE followed by western blot with 22517-1-AP (AIRE Antibody) at dilution of 1:1000 incubated at room temperature for 1.5 hours.



Immunohistochemical analysis of paraffin-embedded human thymus tissue slide using 22517-1-AP (AIRE Antibody) at dilution of 1:200 (under 40x lens). Heat mediated antigen retrieval with Tris-EDTA buffer (pH 9.0).



Immunofluorescent analysis of (4% PFA) fixed HeLa cells using 22517-1-AP (AIRE antibody) at dilution of 1:50 and Alexa Fluor 488-conjugated AffiniPure Goat Anti-Rabbit IgG(H+L).