

## Allgemeine Informationen

**Katalog-Nr.:**

22524-1-AP

**Größe:**

150ul , Konzentration: 450 µg/ml von Nanodrop;

**Wirt:**

Kaninchen

**Isotyp:**

IgG

**Immunogen Katalognummer:**

AG18297

**GenBank-Zugangsnummer:**

BC133003

**GeneID (NCBI):**

6531

**Vollständiger Name:**

solute carrier family 6 (neurotransmitter transporter, dopamine), member 3

**Berechnete Masse:**

620 aa, 68 kDa

**Beobachtete Masse:**

68 kDa

**Reinigungsmethode:**

Antigen-Affinitätsreinigung

**Empfohlene Verdünnungen:**
WB 1:500-1:2000  
IP 0.5-4.0 ug für IP und 1:500-1:1000 für WB  
IHC 1:50-1:500  
IF 1:50-1:500

## Anwendungen

**Geprüfte Anwendungen:**

IF, IHC, IP, WB, ELISA

**In Publikationen genannte Anwendungen:**

IF, IHC, WB

**Getestete Reaktivität:**

Human, Maus, Ratte

**Zitierte Arten:**

Human, Maus, Ratte

**Hinweis-IHC: Antigenmaskierung mit TE-Puffer pH 9,0 empfohlen. (\*) Wahlweise kann die Antigenmaskierung auch mit Citratpuffer pH 6,0 erfolgen.**

**Positivkontrollen:**

WB : Maushirngewebe,

IP : Maushirngewebe,

IHC : Maushirngewebe,

IF : Maushirngewebe,

## Hintergrundinformationen

DAT, also name as SLC6A3, is dopamine transporter which is a member of the sodium- and chloride- dependent neurotransmitter transporter family. Dopamine(DA) released from neurons is cleared by the DA transporter (DAT). Altered dopaminergic signaling is linked to multiple neuropsychiatric disorders, such as attention deficit hyperactive disorder, mood disorders, schizophrenia, autism and so on (PMID:30755521). 22524-1-AP can detect 70-80kDa band, which is consistent with the report (PMID:12746456).

## Bemerkenswerte Veröffentlichungen

Verfasser	Pubmed ID	Journal	Anwendung
Hideaki Kuge	32963038	J Lipid Res	WB,IF
Mo Xu	31535395	J Neurosci Res	
Beatriz Franco	34651324	J Neurosci Res	WB

## Lagerung

**Lagerungsbedingungen:**

Bei -20°C lagern. Nach dem Versand ein Jahr lang stabil

**Lagerungspuffer:**

PBS mit 0.02% Natriumazid und 50% Glycerin pH 7.3.

Aliquotieren ist nicht notwendig bei -20°C Lagerung

\*\*\* 20ul-Größen enthalten 0.1% BSA

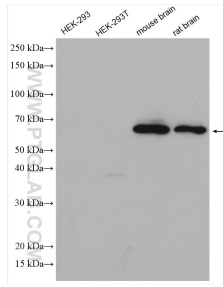
For technical support and original validation data for this product please contact:

T: 1 (888) 4PTGLAB (1-888-478-4522) (toll free in USA), or 1(312) 455-8498 (outside USA)

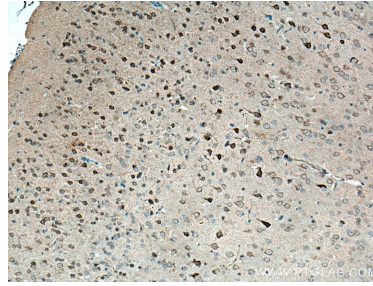
E: [proteintech@ptglab.com](mailto:proteintech@ptglab.com)  
 W: [ptglab.com](http://ptglab.com)

This product is exclusively available under Proteintech Group brand and is not available to purchase from any other manufacturer.

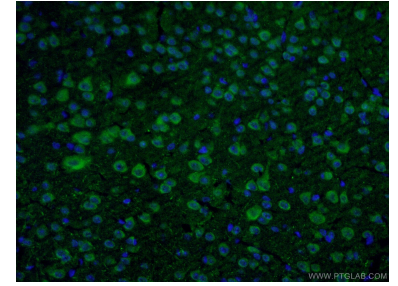
## Ausgewählte Validierungsdaten



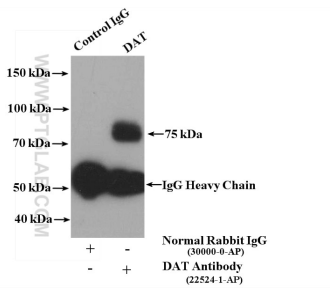
Various lysates were subjected to SDS PAGE followed by western blot with 22524-1-AP (DAT antibody) at dilution of 1:1000 incubated at room temperature for 1.5 hours.



Immunohistochemical analysis of paraffin-embedded mouse brain tissue slide using 22524-1-AP (DAT antibody) at dilution of 1:200 (under 10x lens). Heat mediated antigen retrieval with Tris-EDTA buffer (pH 9.0).



Immunofluorescent analysis of (4% PFA) fixed mouse brain tissue using 22524-1-AP (DAT antibody) at dilution of 1:50 and Alexa Fluor 488-Conjugated AffiniPure Goat Anti-Rabbit IgG(H+L).



IP sample and control were subjected to SDS PAGE followed by western blot with 22524-1-AP (DAT antibody) at dilution of 1:500. 4000ug mouse brain tissue lysate and 4ug antibodies were mixed in the IP experiment.