

Nur für Forschungszwecke

# BCR Polyklonaler Antikörper

Katalog-Nr.:22585-1-AP

Vorgestelltes Produkt

1 Publikationen



## Allgemeine Informationen

Katalog-Nr.:  
22585-1-AP

Größe:  
150ul, Konzentration: 700 µg/ml von  
Nanodrop und 453 µg/ml durch die  
Bradford-Methode mit BSA als  
Standard;

Wirt:  
Kaninchen

Isotyp:  
IgG

Immunogen Katalognummer:  
AG18281

GenBank-Zugangsnummer:  
BC066122

GeneID (NCBI):  
613

Vollständiger Name:  
breakpoint cluster region

Berechnete Masse:  
143 kDa

Beobachtete Masse:  
150-160 kDa

Reinigungsmethode:

Antigen-affinitätsgereinigt

Empfohlene Verdünnungen:

WB 1:500-1:2000  
IP 0.5-4.0 µg für IP und 1:500-1:2000  
für WB  
IHC 1:20-1:200  
IF 1:50-1:500

## Anwendungen

Geprüfte Anwendungen:

FC, IF, IHC, IP, WB, ELISA

In Publikationen genannte Anwendungen:

IHC, WB

Getestete Reaktivität:

Affe, Human

Zitierte Arten:

Human, Maus

**Hinweis-IHC: Antigendemaskierung mit TE-Puffer pH 9,0 empfohlen. (\*) Wahlweise kann die Antigendemaskierung auch mit Citratpuffer pH 6,0 erfolgen.**

Positivkontrollen:

WB : Y79-Zellen, COS-7-Zellen, HEK-293-Zellen, HeLa-Zellen, K-562-Zellen, MCF-7-Zellen

IP : HEK-293-Zellen,

IHC : humanes Hautgewebe,

IF : HeLa-Zellen, HepG2-Zellen

## Hintergrundinformationen

The Bcr gene, mapping on chromosome22, was originally identified by its presence in the chimeric Bcr-Abl oncogene. The Bcr gene encodes for the break point cluster region protein(Bcr). Although the BCR-ABL fusion protein has been extensively studied, the function of the normal BCR gene product is not clear. The protein has serine/threonine kinase activity and is a GTPase-activating protein for RAC1 and CDC42. A chromosomal aberration involving BCR has been found in patients with chronic myeloid leukemia.

## Bemerkenswerte Veröffentlichungen

Verfasser	Pubmed ID	Journal	Anwendung
Yongtao Xiao	34190380	Neurogastroenterol Motil	WB,IHC

## Lagerung

Lagerungsbedingungen:

Bei -20°C lagern. Nach dem Versand ein Jahr lang stabil

Lagerungspuffer:

PBS mit 0.02% Natriumazid und 50% Glycerin pH 7.3.

Aliquotieren ist nicht notwendig bei -20°C Lagerung

\*\*\* 20ul-Größen enthalten 0.1% BSA

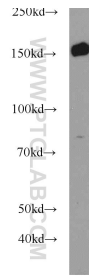
For technical support and original validation data for this product please contact:

T: 1 (888) 4PTGLAB (1-888-478-4522) (toll free in USA), or 1(312) 455-8498 (outside USA)

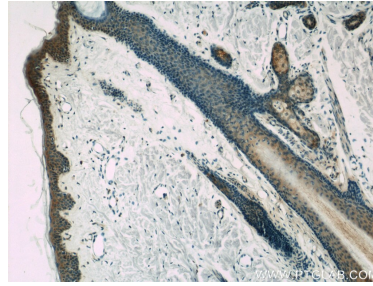
E: proteintech@ptglab.com  
W: ptglab.com

This product is exclusively available under Proteintech Group brand and is not available to purchase from any other manufacturer.

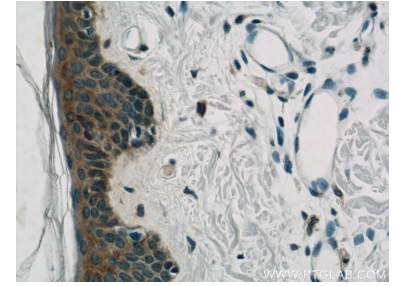
## Ausgewählte Validierungsdaten



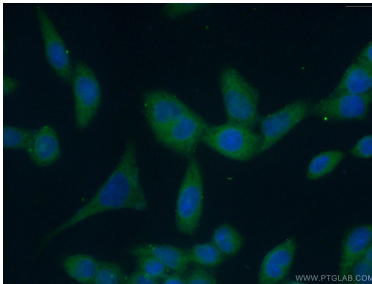
Y79 cells were subjected to SDS PAGE followed by western blot with 22585-1-AP (BCR antibody) at dilution of 1:1000 incubated at room temperature for 1.5 hours.



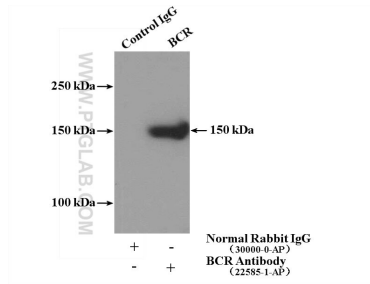
Immunohistochemical analysis of paraffin-embedded human skin slide using 22585-1-AP (BCR Antibody) at dilution of 1:50.



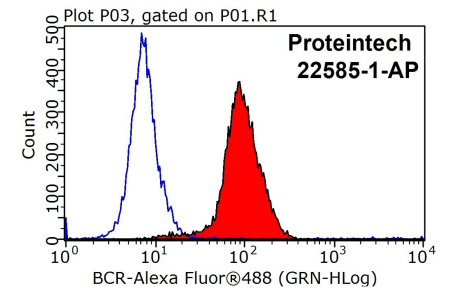
Immunohistochemical analysis of paraffin-embedded human skin slide using 22585-1-AP (BCR Antibody) at dilution of 1:50.



Immunofluorescent analysis of (-20°C Ethanol) fixed HeLa cells using 22585-1-AP (BCR antibody) at dilution of 1:50 and Alexa Fluor 488-conjugated AffiniPure Goat Anti-Rabbit IgG(H+L).



IP Result of anti-BCR (IP:22585-1-AP, 4 $\mu$ g; Detection:22585-1-AP 1:1000) with HEK-293 cells lysate 3000 $\mu$ g.



1X10<sup>6</sup> HepG2 cells were stained with .2 $\mu$ g BCR antibody (22585-1-AP, red) and control antibody (blue). Fixed with 90% MeOH blocked with 3% BSA (30 min). Alexa Fluor 488-conjugated AffiniPure Goat Anti-Rabbit IgG(H+L) with dilution 1:1000.