

Allgemeine Informationen

Katalog-Nr.: 22641-1-AP	GenBank-Zugangsnummer: BC112248	Reinigungsmethode: Antigen-Affinitätsreinigung
Größe: 150ul , Konzentration: 550 µg/ml von Nanodrop und 340 µg/ml durch die Bradford-Methode mit BSA als Standard;	GeneID (NCBI): 475	Empfohlene Verdünnungen: WB 1:300-1:1500 IHC 1:50-1:500 IF 1:50-1:500
Wirt: Kaninchen	Vollständiger Name: ATOX1 antioxidant protein 1 homolog (yeast)	
Isotyp: IgG	Berechnete Masse: 68 aa, 8 kDa	
Immunogen Katalognummer: AG18460	Beobachtete Masse: 7 kDa	

Anwendungen

Geprüfte Anwendungen: IF, IHC, WB, ELISA	Positivkontrollen: WB : A375-Zellen, A549-Zellen, HEK-293T-Zellen, NCI-H1299-Zellen IHC : humanes Leberkarzinomgewebe, IF : PC-3-Zellen,
Getestete Reaktivität: Human	
Hinweis-IHC: Antigenmaskierung mit TE-Puffer pH 9,0 empfohlen. (*) Wahlweise kann die Antigenmaskierung auch mit Citratpuffer pH 6,0 erfolgen.	

Hintergrundinformationen

Antioxidant 1 (ATOX1) is a copper chaperone to regulate copper homeostasis in cell. In the cytosol, ATOX1 always binds to copper and transfer to ATPase proteins in the trans-Golgi network, thereby promoting copper supply to various copper-dependent oxidoreductases matured within the secretory vesicles (PMID: 28294521). Also, the protein could protect cells against oxidative damage and the expression levels of ATOX1 may help to the inflammatory response and antioxidant defense, even to modulate response to the cancer (PMID: 27472369). ATOX1 plays an important role in the physiology of the human central nervous system, and it's highly expressed in the cerebral cortex and hippocampus (PMID: 30545441). Either cytosol or nucleus location of ATOX1 has been reported in different literatures, which may be associated with cell status (PMID: 24445997; 31317143).

Lagerung

Lagerungsbedingungen:
Bei -20°C lagern. Nach dem Versand ein Jahr lang stabil
Lagerungspuffer:
PBS mit 0.02% Natriumazid und 50% Glycerin pH 7.3.
Aliquotieren ist nicht notwendig bei -20°C Lagerung

*** 20ul-Größen enthalten 0.1% BSA

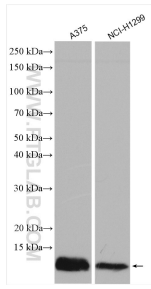
For technical support and original validation data for this product please contact:

T: 1 (888) 4PTGLAB (1-888-478-4522) (toll free in USA), or 1(312) 455-8498 (outside USA)

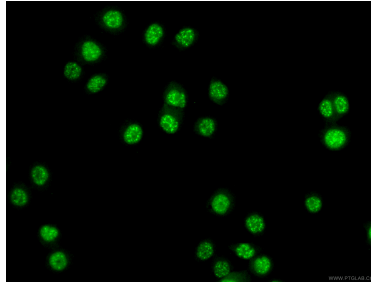
E: proteintech@ptglab.com
W: ptglab.com

This product is exclusively available under Proteintech Group brand and is not available to purchase from any other manufacturer.

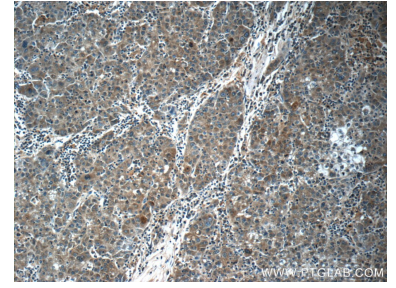
Ausgewählte Validierungsdaten



Various lysates were subjected to SDS PAGE followed by western blot with 22641-1-AP (ATOX1 antibody) at dilution of 1:1000 incubated at room temperature for 1.5 hours.



Immunofluorescent analysis of (4% PFA) fixed PC-3 cells using 22641-1-AP (ATOX1 antibody) at dilution of 1:100 and CoraLite488-Conjugated AffiniPure Goat Anti-Rabbit IgG(H+L).



Immunohistochemical analysis of paraffin-embedded human liver cancer tissue slide using 22641-1-AP (ATOX1 Antibody) at dilution of 1:50 (under 10x lens).