

Nur für Forschungszwecke

# ESRRB Polyklonaler Antikörper

Katalog-Nr.:22644-1-AP

Vorgestelltes Produkt

6 Publikationen



## Allgemeine Informationen

Katalog-Nr.:  
22644-1-AP

Größe:

150ul, Konzentration: 1000 µg/ml von 2103  
Nanodrop und 500 µg/ml durch die  
Bradford-Methode mit BSA als  
Standard;

Wirt:

Kaninchen

Isotyp:

IgG

Immunogen Katalognummer:  
AG18523

GenBank-Zugangsnummer:

BC131517

GeneID (NCBI):

2103

Vollständiger Name:

estrogen-related receptor beta

Berechnete Masse:

508 aa, 56 kDa

Beobachtete Masse:

48-56 kDa

Reinigungsmethode:

Antigen-Affinitätsreinigung

Empfohlene Verdünnungen:

WB 1:500-1:2000

IP 0.5-4.0 µg für IP und 1:200-1:1000  
für WB

## Anwendungen

Geprüfte Anwendungen:

IP, WB, ELISA

In Publikationen genannte Anwendungen:

IP, IHC, WB

Getestete Reaktivität:

Human, Maus, Ratte

Zitierte Arten:

Human, Maus

Positivkontrollen:

WB: PC-13-Zellen, A549-Zellen

IP: A549-Zellen,

## Hintergrundinformationen

Estrogen related receptor beta (ESRRB), a NR3 Steroid Receptor, has been shown to affect early placental development. Also it can act as a repressor of transcriptional activity mediated by the glucocorticoid receptor (GR). It binds as a monomer to the extended half-site TNAAGTGCA and as a homodimer to the estrogen response element (ERE), palindromic thyroid hormone response element (TRE(pal)), and SF-1 response element, but not to the glucocorticoid response element (GRE). Estrogen related receptor beta mutations lead to abnormal development of the chorion and defective diploid trophoblast proliferation, and are lethal during midgestation. Expression has been documented in mice in the extra embryonic ectoderm that gives rise to the chorion. ESTs have been isolated from normal human eye, lung, and testis libraries. The ligand for the receptor is PPARgamma coactivator 1 (PGC-1) beta. ESRRB exists various isoforms and molecular weight of each isoform is 48 kDa, 55 kDa and 56 kDa.

## Bemerkenswerte Veröffentlichungen

Verfasser	Pubmed ID	Journal	Anwendung
Shuai Yu	34616727	Front Cell Dev Biol	WB,IF
Kwon Tae You	26443847	Genes Dev	WB,IF
Joshua E Burda	35614216	Nature	IHC

## Lagerung

Lagerungsbedingungen:

Bei -20°C lagern. Nach dem Versand ein Jahr lang stabil

Lagerungspuffer:

PBS mit 0.02% Natriumazid und 50% Glycerin pH 7.3.

Aliquotieren ist nicht notwendig bei -20°C Lagerung

\*\*\* 20ul-Größen enthalten 0.1% BSA

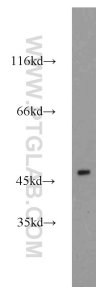
For technical support and original validation data for this product please contact:

T: 1 (888) 4PTGLAB (1-888-478-4522) (toll free  
in USA), or 1(312) 455-8498 (outside USA)

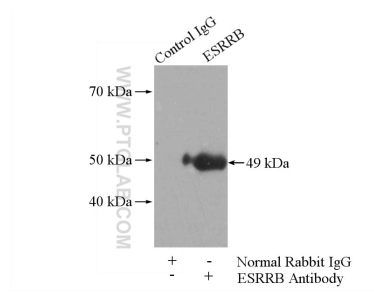
E: proteintech@ptglab.com  
W: ptglab.com

This product is exclusively available under Proteintech Group brand and is not available to purchase from any other manufacturer.

## Ausgewählte Validierungsdaten



PC-13 cells were subjected to SDS PAGE followed by western blot with 22644-1-AP (ESRRB antibody) at dilution of 1:1000 incubated at room temperature for 1.5 hours.



IP Result of anti-ESRRB (IP:22644-1-AP, 4ug; Detection:22644-1-AP 1:300) with A549 cells lysate 1040ug.