

Allgemeine Informationen

| | | |
|---|--|--|
| Katalog-Nr.: 22711-1-AP | GenBank-Zugangsnummer: BC114495 | Reinigungsmethode: Antigen-Affinitätsreinigung |
| Größe: 150ul , Konzentration: 1000 µg/ml von114836 Nanodrop und 487 µg/ml durch die Bradford-Methode mit BSA als Standard; | GeneID (NCBI): Vollständiger Name: SLAM family member 6 | Empfohlene Verdünnungen: WB 1:500-1:1000 IHC 1:50-1:500 |
| Wirt: Kaninchen | Berechnete Masse: 332 aa, 37 kDa | |
| Isotyp: IgG | Beobachtete Masse: 60 kDa | |
| Immunogen Katalognummer: AG18517 | | |

Anwendungen

| | |
|---|---|
| Geprüfte Anwendungen: IHC, WB, ELISA | Positivkontrollen: WB : Daudi cells, IHC : humanes Kolonkarzinomgewebe, humanes Tonsillitisgewebe |
| Getestete Reaktivität: Human | |
| Hinweis-IHC: Antigenmaskierung mit TE-Puffer pH 9,0 empfohlen. (*) Wahlweise kann die Antigenmaskierung auch mit Citratpuffer pH 6,0 erfolgen. | |

Hintergrundinformationen

Signaling lymphocyte activation molecule 6 (SLAMF6) (Ly108 in mice, NTB-A or SF2000 in humans) is a homophilic receptor belonging to the superfamily immunoglobulin (Ig) domain-containing molecules (PMID:31199820). SLAMF6 is a type I transmembrane protein with two extracellular immunoglobulin (Ig)-like domains and three cytoplasmic tyrosine-based signaling motifs, one of which is immunoreceptor tyrosine-based switch motif (PMID:31315913). SLAMF6 is expressed on a wide variety of immune cells including T cells (also TFH), B cells, NK cells (expressed in human only), double positive thymocytes, eosinophils and neutrophils (mouse only) (PMID:11862385).

Lagerung

Lagerungsbedingungen:
Bei -20°C lagern. Nach dem Versand ein Jahr lang stabil

Lagerungspuffer:
PBS mit 0.02% Natriumazid und 50% Glycerin pH 7.3.

Aliquotieren ist nicht notwendig bei -20°C Lagerung

*** 20ul-Größen enthalten 0.1% BSA

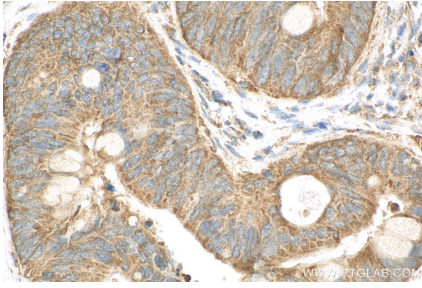
For technical support and original validation data for this product please contact:

T: 1 (888) 4PTGLAB (1-888-478-4522) (toll free
in USA), or 1(312) 455-8498 (outside USA)

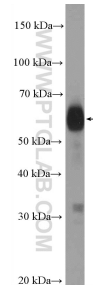
E: proteintech@ptglab.com
W: ptglab.com

This product is exclusively available under Proteintech Group brand and is not available to purchase from any other manufacturer.

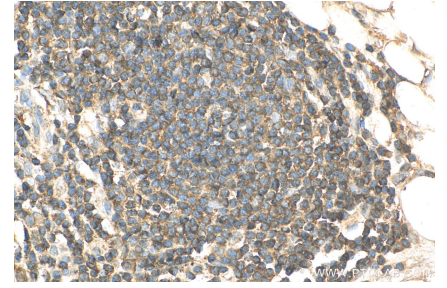
Ausgewählte Validierungsdaten



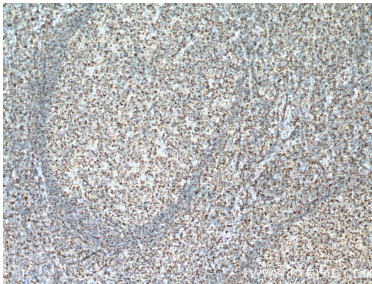
Immunohistochemical analysis of paraffin-embedded human colon cancer tissue slide using 22711-1-AP (SLAMF6 antibody) at dilution of 1:200 (under 40x lens). Heat mediated antigen retrieval with Tris-EDTA buffer (pH 9.0).



Daudi cells were subjected to SDS PAGE followed by western blot with 22711-1-AP (SLAMF6 Antibody) at dilution of 1:600 incubated at room temperature for 1.5 hours.



Immunohistochemical analysis of paraffin-embedded human colon cancer tissue slide using 22711-1-AP (SLAMF6 antibody) at dilution of 1:200 (under 40x lens). Heat mediated antigen retrieval with Tris-EDTA buffer (pH 9.0).



Immunohistochemical analysis of paraffin-embedded human tonsillitis tissue slide using 22711-1-AP (SLAMF6 Antibody) at dilution of 1:200 (under 10x lens). Heat mediated antigen retrieval with Tris-EDTA buffer (pH 9.0).