

Allgemeine Informationen

Katalog-Nr.: 22722-1-AP	GenBank-Zugangsnummer: BC152412	Reinigungsmethode: Antigen-affinitätsgereinigt
Größe: 150ul , Konzentration: 350 µg/ml von Nanodrop;	GeneID (NCBI): 7468	Empfohlene Verdünnungen: WB 1:500-1:2000 IP 0.5-4.0 ug für IP und 1:200-1:1000 für WB
Wirt: Kaninchen	Vollständiger Name: Wolf-Hirschhorn syndrome candidate 1	IHC 1:50-1:500
Isotyp: IgG	Berechnete Masse: 162 kDa	
Immunogen Katalognummer: AG18611	Beobachtete Masse: 70 kDa, 150 kDa	

Anwendungen

Geprüfte Anwendungen:
IHC, IP, WB, ELISA

Getestete Reaktivität:
Human

Hinweis-IHC: Antigenmaskierung mit TE-Puffer pH 9,0 empfohlen. (*) Wahlweise kann die Antigenmaskierung auch mit Citratpuffer pH 6,0 erfolgen.

Positivkontrollen:

WB : HCT 116-Zellen,

IP : HeLa-Zellen,

IHC : humanes Mammakarzinomgewebe,

Hintergrundinformationen

WHSC1 (also known as MMSET or NSD2) is a SET domain containing histone lysine methyltransferase that can di- and trimethylate histone H3 at lysine 36 (H3K36). WHSC1 mRNA is highly expressed in embryonic tissues, especially those with high degrees of proliferation, whereas in adult tissues, the mRNA is primarily expressed in thymus and testis. WHSC1 is implicated in cellular adhesion, clonogenic growth and tumorigenicity. Its overexpression has been found in various cancers. It undergoes alternative splicing resulting in different protein isoforms. Recently WHSC1 has been identified as a critical epigenetic regulator for Tfh differentiation.

Lagerung

Lagerungsbedingungen:

Bei -20°C lagern. Nach dem Versand ein Jahr lang stabil

Lagerungspuffer:

PBS mit 0.02% Natriumazid und 50% Glycerin pH 7.3.

Aliquotieren ist nicht notwendig bei -20°C Lagerung

***** 20ul-Größen enthalten 0.1% BSA**

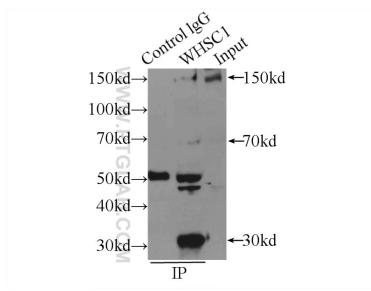
For technical support and original validation data for this product please contact:

T: 1 (888) 4PTGLAB (1-888-478-4522) (toll free
in USA), or 1(312) 455-8498 (outside USA)

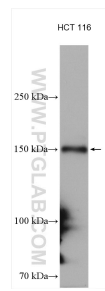
E: proteintech@ptglab.com
W: ptglab.com

This product is exclusively available under Proteintech Group brand and is not available to purchase from any other manufacturer.

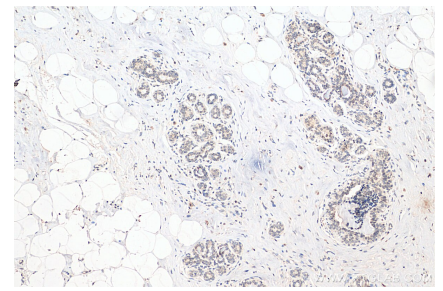
Ausgewählte Validierungsdaten



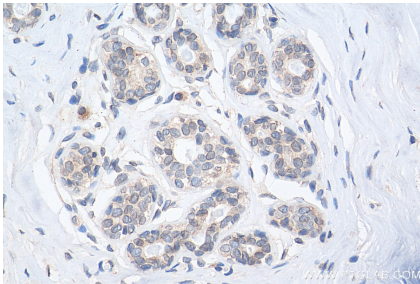
IP Result of anti-WHSC1 (IP:22722-1-AP, 3ug; Detection:22722-1-AP 1:300) with HeLa cells lysate 2000ug.



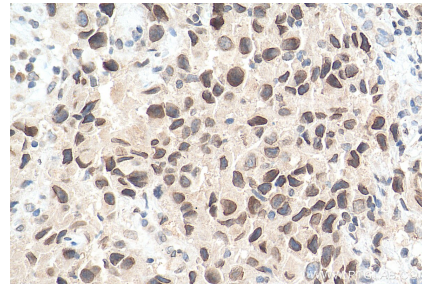
HCT 116 cells were subjected to SDS PAGE followed by western blot with 22722-1-AP (WHSC1 antibody) at dilution of 1:1000 incubated at room temperature for 1.5 hours.



Immunohistochemical analysis of paraffin-embedded human breast cancer tissue slide using 22722-1-AP (WHSC1 antibody) at dilution of 1:200 (under 10x lens). Heat mediated antigen retrieval with Tris-EDTA buffer (pH 9.0).



Immunohistochemical analysis of paraffin-embedded human breast cancer tissue slide using 22722-1-AP (WHSC1 antibody) at dilution of 1:200 (under 40x lens). Heat mediated antigen retrieval with Tris-EDTA buffer (pH 9.0).



Immunohistochemical analysis of paraffin-embedded human breast cancer tissue slide using 22722-1-AP (WHSC1 antibody) at dilution of 1:200 (under 40x lens). Heat mediated antigen retrieval with Tris-EDTA buffer (pH 9.0).