

## Allgemeine Informationen

<b>Katalog-Nr.:</b> 22779-1-AP	<b>GenBank-Zugangsnummer:</b> BC153096	<b>Reinigungsmethode:</b> Antigen-affinitätsgereinigt
<b>Größe:</b> 150ul , Konzentration: 400 µg/ml von Nanodrop;	<b>GeneID (NCBI):</b> 3977	<b>Empfohlene Verdünnungen:</b> WB 1:500-1:1000 IP 0.5-4.0 ug für IP und 1:500-1:2000 für WB
<b>Wirt:</b> Kaninchen	<b>Vollständiger Name:</b> leukemia inhibitory factor receptor alpha	<b>IHC 1:20-1:200</b> <b>IF 1:50-1:500</b>
<b>Isotyp:</b> IgG	<b>Berechnete Masse:</b> 1097 aa, 124 kDa	
<b>Immunogen Katalognummer:</b> AG18742	<b>Beobachtete Masse:</b> 190 kDa	

## Anwendungen

**Geprüfte Anwendungen:**  
FC, IF, IHC, IP, WB, ELISA

**In Publikationen genannte Anwendungen:**  
IF, IHC, WB

**Getestete Reaktivität:**  
Human, Maus

**Zitierte Arten:**  
Human, Maus

**Hinweis-IHC: Antigenmaskierung mit TE-Puffer pH 9,0 empfohlen. (\*) Wahlweise kann die Antigenmaskierung auch mit Citratpuffer pH 6,0 erfolgen.**

**Positivkontrollen:**

**WB:** humanes Skelettmuskelgewebe, Maus-Skelettmuskelgewebe

**IP:** Maus-Skelettmuskelgewebe,

**IHC:** humanes Skelettmuskelgewebe, humanes Nierengewebe, humanes Plazenta-Gewebe, Maus-Cerebellum-Gewebe

**IF:** HeLa-Zellen,

## Hintergrundinformationen

LIFR, also known as CD118, is a subunit of a receptor for leukemia inhibitory factor (LIF). LIF is a pleiotropic cytokine of the interleukin-6 family which affects the differentiation, survival, and proliferation of a wide variety of cells in the adult and the embryo. LIFR is the low-affinity binding chain that, together with the high-affinity converter subunit gp130, forms a high-affinity receptor complex that mediates the action of LIF. The high-affinity complex also binds a related cytokine, oncostatin M (PMID: 8999038). LIFR has also been identified as a breast cancer metastasis suppressor that functions through the HIPPO-YAP pathway (PMID: 23001183).

## Bemerkenswerte Veröffentlichungen

Verfasser	Pubmed ID	Journal	Anwendung
Yuta Kurashina	31701022	Commun Biol	WB
Ming-Ying Ling	36326546	Arch Biochem Biophys	IHC
Chikahiro Imashiro	29993416	IEEE Trans Biomed Eng	WB

## Lagerung

**Lagerungsbedingungen:**

Bei -20°C lagern. Nach dem Versand ein Jahr lang stabil

**Lagerungspuffer:**

PBS mit 0.02% Natriumazid und 50% Glycerin pH 7.3.

Aliquotieren ist nicht notwendig bei -20°C Lagerung

**\*\*\* 20ul-Größen enthalten 0.1% BSA**

For technical support and original validation data for this product please contact:

T: 1 (888) 4PTGLAB (1-888-478-4522) (toll free in USA), or 1(312) 455-8498 (outside USA)

E: [proteintech@ptglab.com](mailto:proteintech@ptglab.com)  
W: [ptglab.com](http://ptglab.com)

**This product is exclusively available under Proteintech Group brand and is not available to purchase from any other manufacturer.**

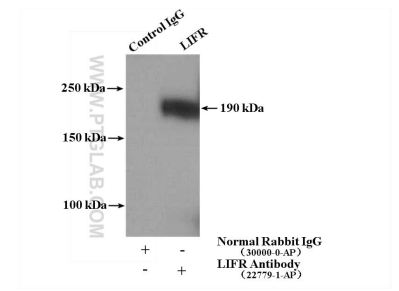
## Ausgewählte Validierungsdaten



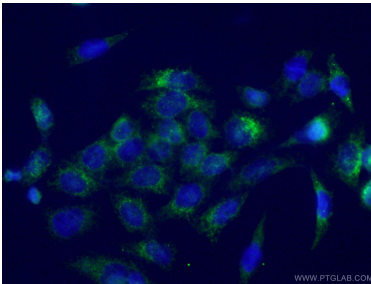
human skeletal muscle tissue were subjected to SDS PAGE followed by western blot with 22779-1-AP (LIFR antibody) at dilution of 1:800 incubated at room temperature for 1.5 hours.



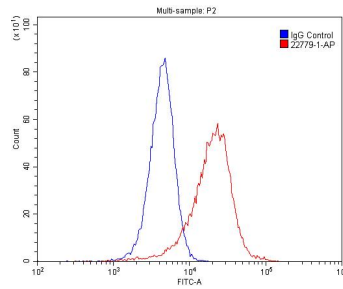
Immunohistochemical analysis of paraffin-embedded human skeletal muscle slide using 22779-1-AP (LIFR Antibody) at dilution of 1:50 (under 40x lens).



IP Result of anti-LIFR (IP:22779-1-AP, 4ug; Detection:22779-1-AP 1:1000) with mouse skeletal muscle tissue lysate 4000ug.



Immunofluorescent analysis of (-20°C Ethanol) fixed HeLa cells using 22779-1-AP (LIFR antibody) at dilution of 1:50 and Alexa Fluor 488-conjugated AffiniPure Goat Anti-Rabbit IgG(H+L).



1x10<sup>6</sup> HeLa cells were stained with .2ug LIFR antibody (22779-1-AP, red) and control antibody (blue). Fixed with 4% PFA blocked with 3% BSA (30 min). Alexa Fluor 488-conjugated AffiniPure Goat Anti-Rabbit IgG(H+L) with dilution 1:1500.