

Allgemeine Informationen

Katalog-Nr.: 22787-1-AP	GenBank-Zugangsnummer: BC112269	Reinigungsmethode: Antigen-Affinitätsreinigung
Größe: 150ul , Konzentration: 1000 µg/ml von9123 Nanodrop;	GeneID (NCBI): Vollständiger Name: solute carrier family 16, member 3 (monocarboxylic acid transporter 4)	Empfohlene Verdünnungen: WB 1:2000-1:20000 IHC 1:1000-1:4000 IF 1:200-1:800
Wirt: Kaninchen	Berechnete Masse: 465 aa, 49 kDa	
Isotyp: IgG	Beobachtete Masse: 38-42 kDa	
Immunogen Katalognummer: AG18788		

Anwendungen

Geprüfte Anwendungen:

FC, IF, IHC, WB, ELISA

In Publikationen genannte Anwendungen:

FC, IF, IHC, IP, WB

Getestete Reaktivität:

Human, Ratte

Zitierte Arten:

Human, Maus, Ratte

Hinweis-IHC: Antigenmaskierung mit TE-Puffer pH 9,0 empfohlen. (*) Wahlweise kann die Antigenmaskierung auch mit Citratpuffer pH 6,0 erfolgen.

Positivkontrollen:

WB : HeLa-Zellen, HepG2-Zellen, PC-3-Zellen, Ratten-Skelettmuskelgewebe

IHC : humanes Mammakarzinomgewebe, humanes Nierenzellkarzinomgewebe, humanes Prostatakarzinomgewebe, humanes Skelettmuskelgewebe, Maus-Skelettmuskelgewebe

IF : HepG2-Zellen,

Hintergrundinformationen

The monocarboxylate transporter 4 (MCT4, also known as SLC16A3) is involved in the transportation of metabolically important monocarboxylates such as lactate, pyruvate, acetate and ketone bodies. It is widely expressed, particularly strongly in glycolytic tissues such as white skeletal muscle fibres, astrocytes, white blood cells, chondrocytes and some mammalian cell lines. MCT4 is also linked to tumor biology because it mediates lactate transport across membranes resulting in antiapoptotic effects.

Bemerkenswerte Veröffentlichungen

Verfasser	Pubmed ID	Journal	Anwendung
Xiao Liang	36212974	Evid Based Complement Alternat Med	IF
Yuto Mukai	36104287	Biopharm Drug Dispos	WB
Bo Cheng	30226548	Oncol Rep	

Lagerung

Lagerungsbedingungen:

Bei -20°C lagern. Nach dem Versand ein Jahr lang stabil

Lagerungspuffer:

PBS mit 0.02% Natriumazid und 50% Glycerin pH 7.3.

Aliquotieren ist nicht notwendig bei -20°C Lagerung

*** 20ul-Größen enthalten 0.1% BSA

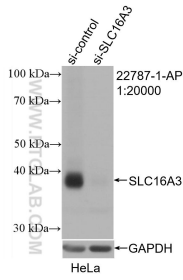
For technical support and original validation data for this product please contact:

T: 1 (888) 4PTGLAB (1-888-478-4522) (toll free in USA), or 1(312) 455-8498 (outside USA)

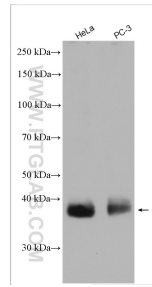
E: proteintech@ptglab.com
W: ptglab.com

This product is exclusively available under Proteintech Group brand and is not available to purchase from any other manufacturer.

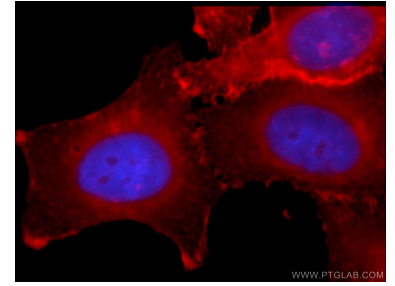
Ausgewählte Validierungsdaten



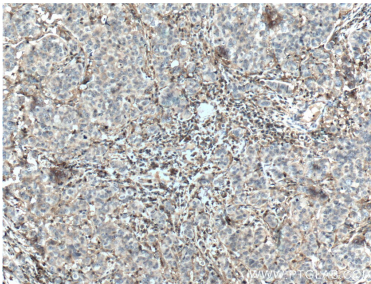
WB result of MCT4 antibody (22787-1-AP; 1:20000; incubated at room temperature for 1.5 hours) with sh-Control and sh-MCT4 transfected HeLa cells.



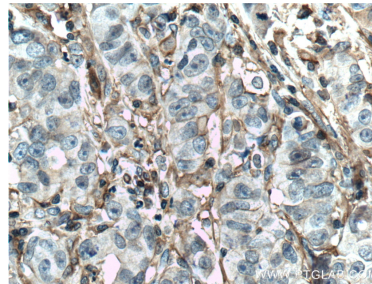
Various lysates were subjected to SDS PAGE followed by western blot with 22787-1-AP (MCT4 antibody) at dilution of 1:20000 incubated at room temperature for 1.5 hours.



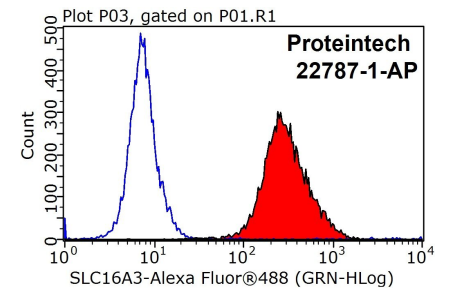
Immunofluorescent analysis of HepG2 cells using 22787-1-AP (MCT4 antibody) at dilution of 1:50 and Rhodamine-labeled goat anti-rabbit IgG (red).



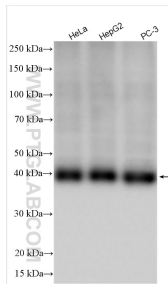
Immunohistochemical analysis of paraffin-embedded human prostate cancer tissue slide using 22787-1-AP (MCT4 antibody at dilution of 1:200 (under 10x lens). Heat mediated antigen retrieval with Tris-EDTA buffer (pH 9.0).



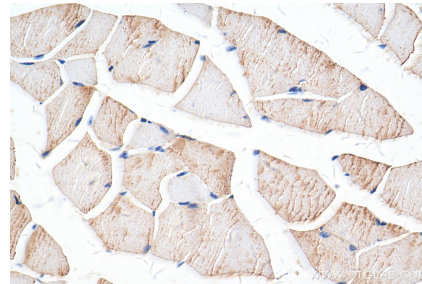
Immunohistochemical analysis of paraffin-embedded human prostate cancer tissue slide using 22787-1-AP (MCT4 antibody at dilution of 1:200 (under 40x lens). Heat mediated antigen retrieval with Tris-EDTA buffer (pH 9.0).



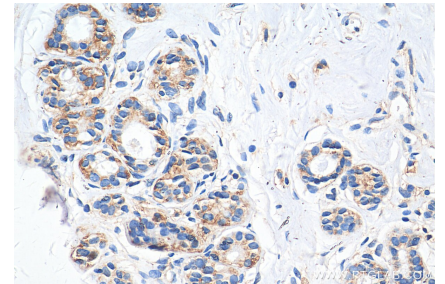
1X10⁶ HepG2 cells were stained with 0.2ug MCT4 antibody (22787-1-AP, red) and control antibody (blue). Fixed with 90% MeOH blocked with 3% BSA (30 min). Alexa Fluor 488-conjugated AffiniPure Goat Anti-Rabbit IgG(H+L) with dilution 1:1000.



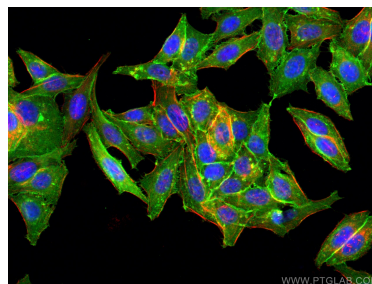
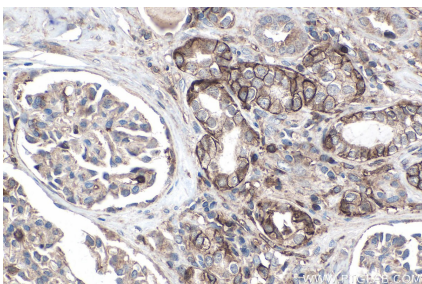
Various lysates were subjected to SDS PAGE followed by western blot with 22787-1-AP (MCT4 antibody) at dilution of 1:20000 incubated at room temperature for 1.5 hours.



Immunohistochemical analysis of paraffin-embedded mouse skeletal muscle tissue slide using 22787-1-AP (MCT4 antibody) at dilution of 1:2000 (under 40x lens). Heat mediated antigen retrieval with Tris-EDTA buffer (pH 9.0).



Immunohistochemical analysis of paraffin-embedded human breast cancer tissue slide using 22787-1-AP (MCT4 antibody) at dilution of 1:2000 (under 40x lens). Heat mediated antigen retrieval with Tris-EDTA buffer (pH 9.0).



Immunohistochemical analysis of paraffin-embedded human renal cell carcinoma tissue slide using 22787-1-AP (MCT4 antibody) at dilution of 1:8000 (under 40x lens). Heat mediated antigen retrieval with Tris-EDTA buffer (pH 9.0).

Immunofluorescent analysis of (-20°C Ethanol) fixed HepG2 cells using MCT4 antibody (22787-1-AP) at dilution of 1:400 and CoraLite®488-Conjugated AffiniPure Goat Anti-Rabbit IgG(H+L), CL594-Phalloidin (red).