

Nur für Forschungszwecke

# IGF2BP1 Polyklonaler Antikörper

Katalog-Nr.: 22803-1-AP

Vorgestelltes Produkt

49 Publikationen



## Allgemeine Informationen

|  |   |  |
|--|---|--|
| <b>Katalog-Nr.:</b><br>22803-1-AP                              | <b>GenBank-Zugangsnummer:</b><br>BC156957   | <b>Reinigungsmethode:</b><br>Antigen-Affinitätsreinigung   |
| <b>Größe:</b><br>150ul, Konzentration: 900 µg/ml von Nanodrop; | <b>GeneID (NCBI):</b><br>10642  | <b>Empfohlene Verdünnungen:</b><br>WB 1:5000-1:50000<br>IP 0.5-4.0 µg für IP und 1:500-1:2000 für WB |
| <b>Wirt:</b><br>Kaninchen                                      | <b>Vollständiger Name:</b><br>insulin-like growth factor 2 mRNA binding protein 1 | <b>IHC 1:50-1:500</b><br><b>IF 1:20-1:200</b>  |
| <b>Isotyp:</b><br>IgG  | <b>Berechnete Masse:</b><br>577 aa, 63 kDa  |  |
| <b>Immunogen Katalognummer:</b><br>AG18859                     | <b>Beobachtete Masse:</b><br>65-70 kDa  |  |

## Anwendungen

### Geprüfte Anwendungen:

IF, IHC, IP, WB, ELISA

### In Publikationen genannte Anwendungen:

CoIP, IF, IHC, IP, RIP, WB

### Getestete Reaktivität:

Human, Maus, Ratte

### Zitierte Arten:

Human, Maus, Ratte

**Hinweis-IHC: Antigenmaskierung mit TE-Puffer pH 9,0 empfohlen. (\*) Wahlweise kann die Antigenmaskierung auch mit Citratpuffer pH 6,0 erfolgen.**

### Positivkontrollen:

**WB:** HEK-293-Zellen, A375-Zellen, HepG2-Zellen, Jurkat-Zellen, Mäusnierengewebe, Rattennierengewebe

**IP:** HEK-293-Zellen,

**IHC:** humanes Lungenkarzinomgewebe, humanes Leberkarzinomgewebe

**IF:** A375-Zellen,

## Hintergrundinformationen

IGF2BP1, also named as CRDBP, VICKZ1, ZBP1, is a 577 amino acid protein, which belongs to the RRM IMP/VICKZ family. IGF2BP1 can form homodimers and heterodimers with IGF2BP1 and IGF2BP3. IGF2BP1 is mainly expressed in the embryo, including in fetal liver, fetal lung, fetal kidney, fetal thymus and also expressed follicles of ovary, as well as in gonocytes of testis, spermatogonia, semen, oocytes and placenta. IGF2BP1 is Expressed in various cancers, including testis and lung cancers, as well as kidney, prostate and trachea cancers. IGF2BP1 as RNA-binding factor that recruits target transcripts to cytoplasmic protein-RNA complexes (mRNPs). It also modulates the rate and location at which target transcripts encounter the translational apparatus and shields them from endonuclease attacks or microRNA-mediated degradation. The calculated molecular weight of IGF2BP1 is 63 kDa, but modified IGF2BP1 is about 65-70 kDa.

## Bemerkenswerte Veröffentlichungen

| Verfasser         | Pubmed ID | Journal        | Anwendung |
|-------------------|-----------|----------------|-----------|
| Kusuma Suphakhong | 36183833  | J Biol Chem    | WB        |
| Mei-Jia Zhu       | 32918374  | J Cell Mol Med | WB,IHC    |
| Baochi Ou         | 36302751  | Cell Death Dis | WB        |

## Lagerung

### Lagerungsbedingungen:

Bei -20°C lagern. Nach dem Versand ein Jahr lang stabil

### Lagerungspuffer:

PBS mit 0.02% Natriumazid und 50% Glycerin pH 7.3.

Aliquotieren ist nicht notwendig bei -20°C Lagerung

\*\*\* 20ul-Größen enthalten 0.1% BSA

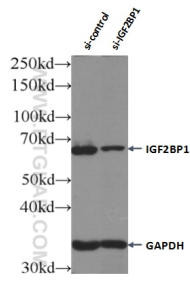
For technical support and original validation data for this product please contact:

T: 1 (888) 4PTGLAB (1-888-478-4522) (toll free in USA), or 1(312) 455-8498 (outside USA)

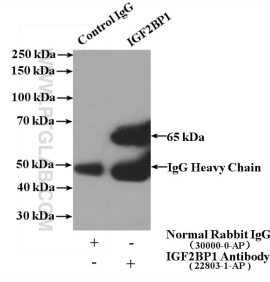
E: proteintech@ptglab.com  
W: ptglab.com

This product is exclusively available under Proteintech Group brand and is not available to purchase from any other manufacturer.

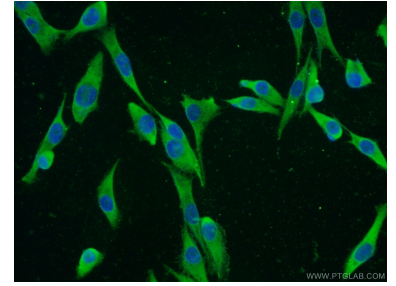
## Ausgewählte Validierungsdaten



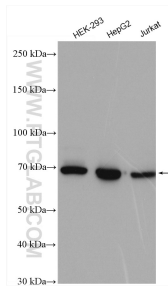
WB result of IGF2BP1 antibody (22803-1-AP; 1:6000; incubated at room temperature for 1.5 hours) with sh-Control and sh-IGF2BP1 transfected Jurkat cells.



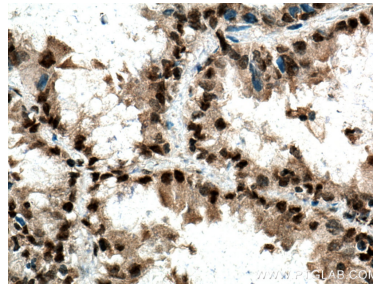
IP Result of anti-IGF2BP1 (IP:22803-1-AP, 4ug; Detection:22803-1-AP 1:1000) with HEK-293 cells lysate 1480ug.



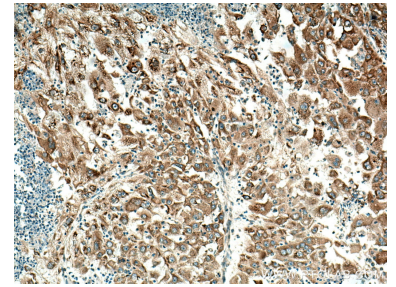
Immunofluorescent analysis of A375 cells using 22803-1-AP (IGF2BP1 antibody) at dilution of 1:50 and Alexa Fluor 488-conjugated AffiniPure Goat Anti-Rabbit IgG(H+L).



Various lysates were subjected to SDS PAGE followed by western blot with 22803-1-AP (IGF2BP1 antibody) at dilution of 1:20000 incubated at room temperature for 1.5 hours.



Immunohistochemical analysis of paraffin-embedded human lung cancer tissue slide using 22803-1-AP (IGF2BP1 antibody) at dilution of 1:200 (under 40x lens). Heat mediated antigen retrieval with Tris-EDTA buffer (pH 9.0).



Immunohistochemical analysis of paraffin-embedded human liver cancer tissue slide using 22803-1-AP (IGF2BP1 antibody) at dilution of 1:200 (under 10x lens). Heat mediated antigen retrieval with Tris-EDTA buffer (pH 9.0).