

## Allgemeine Informationen

<b>Katalog-Nr.:</b> 22851-1-AP	<b>GenBank-Zugangsnummer:</b> BC096344	<b>Reinigungsmethode:</b> Antigen-Affinitätsreinigung
<b>Größe:</b> 150ul , Konzentration: 450 µg/ml von Nanodrop;	<b>GeneID (NCBI):</b> 8481	<b>Empfohlene Verdünnungen:</b> WB 1:500-1:1000 IHC 1:20-1:200 IF 1:50-1:500
<b>Wirt:</b> Kaninchen	<b>Vollständiger Name:</b> oral-facial-digital syndrome 1	
<b>Isotyp:</b> IgG	<b>Berechnete Masse:</b> 1012 aa, 117 kDa	
<b>Immunogen Katalognummer:</b> AG18898	<b>Beobachtete Masse:</b> 43 kDa, 120 kDa	

## Anwendungen

<b>Geprüfte Anwendungen:</b> IF, IHC, WB, ELISA	<b>Positivkontrollen:</b> WB : HeLa-Zellen, SH-SY5Y-Zellen IHC : humanes Hirngewebe, IF : HEK-293-Zellen,
<b>In Publikationen genannte Anwendungen:</b> IF, WB	
<b>Getestete Reaktivität:</b> Human	
<b>Zitierte Arten:</b> Human, Maus, Ratte	

**Hinweis-IHC: Antigenmaskierung mit TE-Puffer pH 9,0 empfohlen. (\*) Wahlweise kann die Antigenmaskierung auch mit Citratpuffer pH 6,0 erfolgen.**

## Hintergrundinformationen

OFD1, also named as CXorf5 and 71-7A, belongs to the OFD1 family. It has been implicated in several developmental syndromes, including a male-lethal X-linked dominant condition, Oral-Facial-Digital type 1 (OFD1) syndrome, X-linked recessive Simpson-Golabi-Behmel syndrome type 2 (SGBS2) and Joubert syndrome and related disorders (JSRDs). It is a component of the centrioles controlling mother and daughter centrioles length. It recruits to the centriole IFT88 and centriole distal appendage-specific proteins including CEP164. Involved in the biogenesis of the cilium, a centriole-associated function. OFD1 plays an important role in development by regulating Wnt signaling and the specification of the left-right axis. This antibody recognizes all the isoforms of OFD1. The 43 kDa isoform 2. The ~80 kDa band is unknown.

## Bemerkenswerte Veröffentlichungen

Verfasser	Pubmed ID	Journal	Anwendung
Dragomir B Krastev	29789535	Nat Commun	IF
Ryuji Kojima	35720483	Oncol Lett	WB, IF
Ji Hyun Shin	25796328	Biochem Biophys Res Commun	WB

## Lagerung

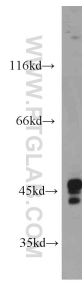
**Lagerungsbedingungen:**  
Bei -20°C lagern. Nach dem Versand ein Jahr lang stabil  
**Lagerungspuffer:**  
PBS mit 0.02% Natriumazid und 50% Glycerin pH 7.3.  
 Aliquotieren ist nicht notwendig bei -20°C Lagerung

**\*\*\* 20ul-Größen enthalten 0.1% BSA**

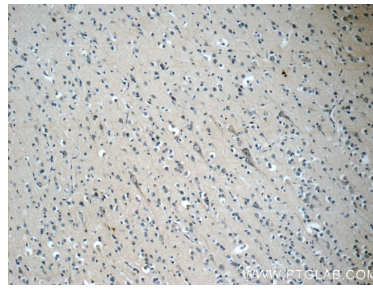
For technical support and original validation data for this product please contact:  
 T: 1 (888) 4PTGLAB (1-888-478-4522) (toll free in USA), or 1(312) 455-8498 (outside USA)  
 E: [proteintech@ptglab.com](mailto:proteintech@ptglab.com)  
 W: [ptglab.com](http://ptglab.com)

**This product is exclusively available under Proteintech Group brand and is not available to purchase from any other manufacturer.**

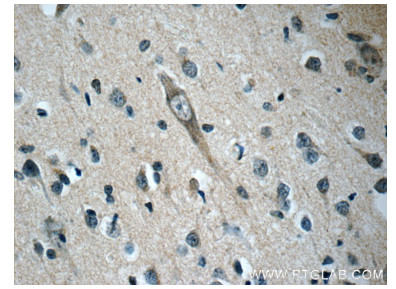
## Ausgewählte Validierungsdaten



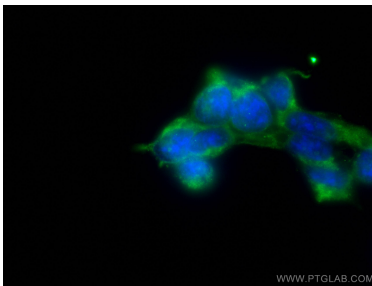
HeLa cells were subjected to SDS PAGE followed by western blot with 22851-1-AP (OFD1 antibody) at dilution of 1:500 incubated at room temperature for 1.5 hours.



Immunohistochemical analysis of paraffin-embedded human brain slide using 22851-1-AP (OFD1 Antibody) at dilution of 1:50. (under 10x lens).



Immunohistochemical analysis of paraffin-embedded human brain slide using 22851-1-AP (OFD1 Antibody) at dilution of 1:50. (under 40x lens).



Immunofluorescent analysis of (-20°C Ethanol) fixed HEK-293 cells using OFD1 antibody (22851-1-AP) at dilution of 1:200 and CoraLite®488-Conjugated AffiniPure Goat Anti-Rabbit IgG(H+L).