

Allgemeine Informationen

Katalog-Nr.: 22861-1-AP	GenBank-Zugangsnummer: BC125167	Reinigungsmethode: Antigen-Affinitätsreinigung
Größe: 150ul , Konzentration: 500 µg/ml von Nanodrop und 327 µg/ml durch die Bradford-Methode mit BSA als Standard;	GeneID (NCBI): 116379	Empfohlene Verdünnungen: WB 1:500-1:1000 IHC 1:50-1:500
Wirt: Kaninchen	Vollständiger Name: interleukin 22 receptor, alpha 2	
Isotyp: IgG	Berechnete Masse: 263 aa, 31 kDa	
Immunogen Katalognummer: AG18854	Beobachtete Masse: 27 kDa	

Anwendungen

Geprüfte Anwendungen: FC, IHC, WB, ELISA	Positivkontrollen: WB : MDA-MB-453s-Zellen, IHC : humanes Lungenkarzinomgewebe, humanes Mammakarzinomgewebe
Getestete Reaktivität: Human	
Hinweis-IHC: Antigenmaskierung mit TE-Puffer pH 9,0 empfohlen. (*) Wahlweise kann die Antigenmaskierung auch mit Citratpuffer pH 6,0 erfolgen.	

Hintergrundinformationen

Interleukin-22 receptor subunit alpha-2 (IL22RA2, also known as CRF2-10) is a soluble member of the type II cytokine receptor family. Through binding to IL22, IL22RA2 prevents the interaction of IL22 with the functional IL22-R complex and blocks the activity of IL22 (in vitro). IL22RA2 may play an important role as an IL22 antagonist in the regulation of inflammatory responses. It has been described that human IL22RA2 gene encodes three alternatively spliced isoforms called CRF2-10L, CRF2-10, and CRF2-10s, with molecular weights of 31 kDa, 27 kDa, and 15 kDa, respectively.

Lagerung

Lagerungsbedingungen:
Bei -20°C lagern. Nach dem Versand ein Jahr lang stabil
Lagerungspuffer:
PBS mit 0.02% Natriumazid und 50% Glycerin pH 7.3.
Aliquotieren ist nicht notwendig bei -20°C Lagerung

*** 20ul-Größen enthalten 0.1% BSA

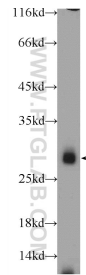
For technical support and original validation data for this product please contact:

T: 1 (888) 4PTGLAB (1-888-478-4522) (toll free in USA), or 1(312) 455-8498 (outside USA)

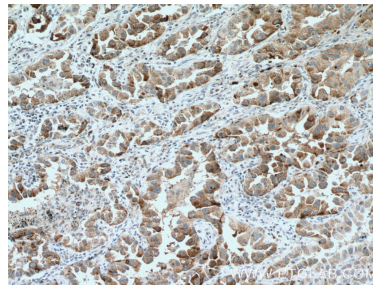
E: proteintech@ptglab.com
W: ptglab.com

This product is exclusively available under Proteintech Group brand and is not available to purchase from any other manufacturer.

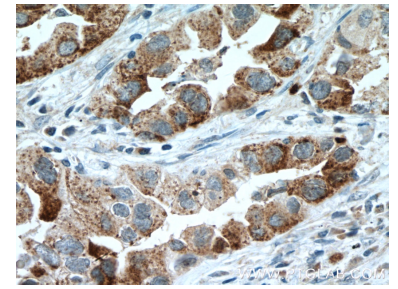
Ausgewählte Validierungsdaten



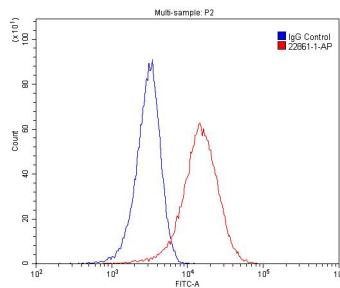
MDA-MB-453s cells were subjected to SDS PAGE followed by western blot with 22861-1-AP (IL22RA2 Antibody) at dilution of 1:600 incubated at room temperature for 1.5 hours.



Immunohistochemical analysis of paraffin-embedded human lung cancer tissue slide using 22861-1-AP (IL22RA2 antibody) at dilution of 1:200 (under 10x lens. Heat mediated antigen retrieval with Tris-EDTA buffer (pH 9.0).



Immunohistochemical analysis of paraffin-embedded human lung cancer tissue slide using 22861-1-AP (IL22RA2 antibody) at dilution of 1:200 (under 40x lens. Heat mediated antigen retrieval with Tris-EDTA buffer (pH 9.0).



1X10⁶ HeLa cells were stained with 0.2ug IL22RA2 antibody (22861-1-AP, red) and control antibody (blue). Alexa Fluor 488-conjugated AffiniPure Goat Anti-Rabbit IgG(H+L) with dilution 1:1500. Cells were fixed with 4% PFA and permeabilized with 0.1% Triton X-100.