

Nur für Forschungszwecke

Caspase 1/p20/p10 Polyklonaler Antikörper



Katalog-Nr.: 22915-1-AP

Vorgestelltes Produkt

513 Publikationen

Allgemeine Informationen

Katalog-Nr.: 22915-1-AP	GenBank-Zugangsnummer: BC062327	Reinigungsmethode: Antigen-Affinitätsreinigung
Größe: 150ul, Konzentration: 650 µg/ml von Nanodrop;	GeneID (NCBI): 834	Empfohlene Verdünnungen: WB 1:2000-1:12000 IHC 1:100-1:400 IF 1:10-1:100
Wirt: Kaninchen	Vollständiger Name: caspase 1, apoptosis-related cysteine peptidase (interleukin 1, beta, convertase)	
Isotyp: IgG	Berechnete Masse: 404 aa, 45 kDa	
Immunogen Katalognummer: AG11143	Beobachtete Masse: 45-47 kDa, 30 kDa, 35 kDa	

Anwendungen

Geprüfte Anwendungen:

IF, IHC, WB, ELISA

In Publikationen genannte Anwendungen:

IF, IHC, WB

Getestete Reaktivität:

Human, Maus, Ratte

Zitierte Arten:

Affe, Hausschwein, Human, Hund, Maus, Ratte, Rind

Hinweis-IHC: Antigendemaskierung mit TE-Puffer pH 9,0 empfohlen. (*) Wahlweise kann die Antigendemaskierung auch mit Citratpuffer pH 6,0 erfolgen.

Positivkontrollen:

WB: Raji-Zellen, C6-Zellen, HeLa-Zellen, HepG2-Zellen, Jurkat-Zellen, MCF-7-Zellen, NIH/3T3-Zellen, THP-1-Zellen, U-937-Zellen

IHC: humanes Milzgewebe,

IF: C6-Zellen,

Hintergrundinformationen

CASP1(caspase-1) is also named as IL1BCE, IL1BCE and belongs to the peptidase C14A family. It is a cysteine protease that regulates inflammatory processes through its capacity to process and activate the interleukin-1-beta (IL1B), IL18, and IL33 precursor proteins. The active caspase-1 can increase cellular membrane permeability and intracellular calcium levels, which facilitates lysosome exocytosis and release of host antimicrobial factors and microbial products (PMID:21804020). It has 5 isoforms produced by alternative splicing. 22915-1-AP can recognize all the five isoforms of caspase 1. It also can recognize p45 procaspase and the mature fragments p10 and p20.

Bemerkenswerte Veröffentlichungen

Verfasser	Pubmed ID	Journal	Anwendung
Lin-Tao Xu	34601084	J Ethnopharmacol	WB
DANDAN FENG	34650637	Exp Ther Med	WB
Xin Liu	34586578	J Bioenerg Biomembr	WB

Lagerung

Lagerungsbedingungen:

Bei -20°C lagern. Nach dem Versand ein Jahr lang stabil

Lagerungspuffer:

PBS mit 0.02% Natriumazid und 50% Glycerin pH 7.3.

Aliquotieren ist nicht notwendig bei -20°C Lagerung

*** 20ul-Größen enthalten 0.1% BSA

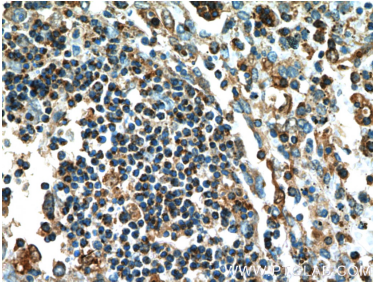
For technical support and original validation data for this product please contact:

T: 1 (888) 4PTGLAB (1-888-478-4522) (toll free in USA), or 1(312) 455-8498 (outside USA)

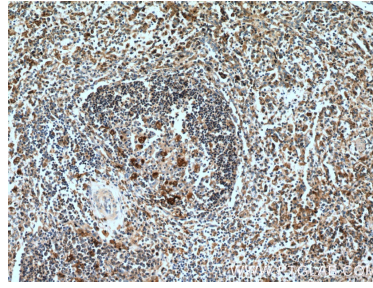
E: proteintech@ptglab.com
W: ptglab.com

This product is exclusively available under Proteintech Group brand and is not available to purchase from any other manufacturer.

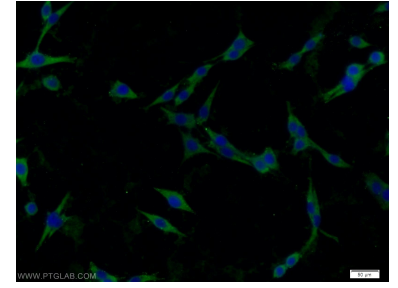
Ausgewählte Validierungsdaten



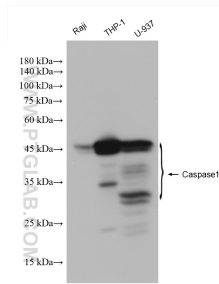
Immunohistochemical analysis of paraffin-embedded human spleen tissue slide using 22915-1-AP (Caspase 1 Antibody) at dilution of 1:200 (under 10x lens).



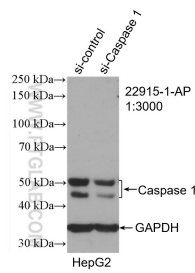
Immunohistochemical analysis of paraffin-embedded human spleen tissue slide using 22915-1-AP (Caspase 1 Antibody) at dilution of 1:200 (under 40x lens).



Immunofluorescent analysis of C6 cells using 22915-1-AP (Caspase 1 antibody) at dilution of 1:25 and Alexa Fluor 488-conjugated AffiniPure Goat Anti-Rabbit IgG(H+L).



Various lysates were subjected to SDS PAGE followed by western blot with 22915-1-AP (Caspase 1/p20/p10 antibody) at dilution of 1:6000 incubated at room temperature for 1.5 hours.



WB result of Caspase 1/p20/p10 antibody (22915-1-AP; 1:3000; incubated at room temperature for 1.5 hours) with sh-Control and sh-Caspase 1/p20/p10 transfected HepG2 cells.