

## Allgemeine Informationen

Katalog-Nr.:  
22980-1-AP

Größe:  
150ul, Konzentration: 600 µg/ml von  
Nanodrop und 347 µg/ml durch die  
Bradford-Methode mit BSA als  
Standard;

Wirt:  
Kaninchen

Isotyp:  
IgG

Immunogen Katalognummer:  
AG18429

GenBank-Zugangsnummer:  
BC118597

GeneID (NCBI):  
5625

Vollständiger Name:  
proline dehydrogenase (oxidase) 1

Berechnete Masse:  
600 aa, 68 kDa

Beobachtete Masse:  
56 kDa, 66 kDa

Reinigungsmethode:

Antigen-Affinitätsreinigung

Empfohlene Verdünnungen:

WB 1:2000-1:10000

IHC 1:20-1:200

## Anwendungen

Geprüfte Anwendungen:

IHC, WB, ELISA

In Publikationen genannte Anwendungen:

IF, IHC, WB

Getestete Reaktivität:

Human, Maus, Ratte

Zitierte Arten:

Human, Maus, Ratte

**Hinweis-IHC: Antigendemaskierung mit TE-Puffer pH 9,0 empfohlen. (\*) Wahlweise kann die Antigendemaskierung auch mit Citratpuffer pH 6,0 erfolgen.**

Positivkontrollen:

WB : Mauslebergewebe, A549-Zellen,  
Rattenlebergewebe

IHC : humanes Cerebellum-Gewebe, humanes  
Leberkarzinomgewebe, humanes  
Mammakarzinomgewebe, humanes  
Skelettmuskelgewebe

## Hintergrundinformationen

PRODH(Proline dehydrogenase 1, mitochondrial) is also named as PIG6, HSPOX2, PRODH1, PRODH2, POX, SCZD4, TP53I6 and belongs to the proline oxidase family. It is an oxidoreductase involved in the transfer of redox potential across the mitochondrial membrane and catalyzes the rate-limiting oxidation of proline to pyrroline- 5-carboxylate (P5C). High PRODH activity is sufficient to induce mitochondria-mediated apoptosis in the presence of proline. Defects in PRODH are the cause of hyperprolinemia type 1 (HP-1) and defects in PRODH are associated with susceptibility to schizophrenia type 4 (SCZD4). This protein has 3 isoforms produced by alternative splicing with the molecular mass of 68 kDa, 59 kDa and 56 kDa.

## Bemerkenswerte Veröffentlichungen

Verfasser	Pubmed ID	Journal	Anwendung
Weijing Zhang	36230367	Animals (Basel)	WB,IF
Chengwen Feng	32883027	Animals (Basel)	WB,IF
Jiacheng Wang	33294127	Oxid Med Cell Longev	WB

## Lagerung

Lagerungsbedingungen:

Bei -20°C lagern. Nach dem Versand ein Jahr lang stabil

Lagerungspuffer:

PBS mit 0.02% Natriumazid und 50% Glycerin pH 7.3.

Aliquotieren ist nicht notwendig bei -20°C Lagerung

\*\*\* 20ul-Größen enthalten 0.1% BSA

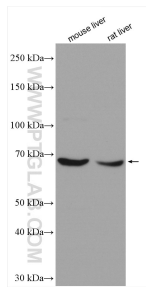
For technical support and original validation data for this product please contact:

T: 1 (888) 4PTGLAB (1-888-478-4522) (toll free  
in USA), or 1(312) 455-8498 (outside USA)

E: [proteintech@ptglab.com](mailto:proteintech@ptglab.com)  
W: [ptglab.com](http://ptglab.com)

This product is exclusively available under Proteintech Group brand and is not available to purchase from any other manufacturer.

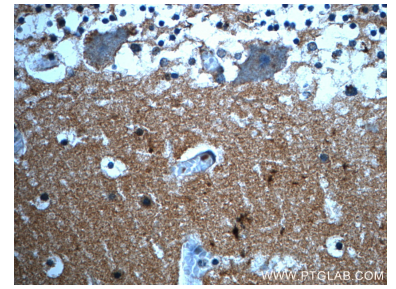
## Ausgewählte Validierungsdaten



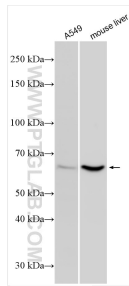
Various lysates were subjected to SDS PAGE followed by western blot with 22980-1-AP (PRODH antibody) at dilution of 1:5000 incubated at room temperature for 1.5 hours.



Immunohistochemical analysis of paraffin-embedded human cerebellum slide using 22980-1-AP (PRODH Antibody) at dilution of 1:50 (under 10x lens).



Immunohistochemical analysis of paraffin-embedded human cerebellum slide using 22980-1-AP (PRODH Antibody) at dilution of 1:50 (under 40x lens).



Various lysates were subjected to SDS PAGE followed by western blot with 22980-1-AP (PRODH antibody) at dilution of 1:5000 incubated at room temperature for 1.5 hours.